



Fourth Sunday after Pentecost

Saturday, June 20, 2026, 5:00 p.m.

Sunday, June 21, 2026, 9:30 a.m.

St. Luke's Lutheran Church, Waukesha, WI

www.stlukeslutheran.org office@stlukeslutheran.org (262) 542-2545

**Helping people make life-changing connections with God
through Jesus Christ.**

Fourth Sunday after Pentecost

Saturday, June 13, 2026, 5:00 p.m.

Sunday, June 14, 2026, 9:30 a.m.

Notes for Worship

- Hymns: ELW: cranberry ACS purple.
- Individually wrapped gluten-free communion wafers are available upon request.
- We invite children of all ages to be in worship with us. Children are welcome to use the Pray-Ground in front of the church on the piano side as a comfortable space to experience worship. If you feel your child(ren) are being too disruptive, you are welcome to move into the Chapel.

GATHERING

PRELUDE *If You But Trust in God to Guide You*

Aaron David Miller

CONFESSION AND FORGIVENESS

Blessed be the holy Trinity, † one God,
whose compassion endures forever.

Amen.

Let us confess our sin to God.

Silence is kept for reflection.

Compassionate God,

we confess to you all our sins.

Our burden is heavy, and we cannot free ourselves.

In your mercy, call us back to you.

Your yoke is easy and your burden is light.

Restore us to dwell in your peace.

In Christ's name we pray,

Amen.

Jesus says, "Come to me,
all you who are weary
and are carrying heavy burdens,
and I will give you rest."

In the name of God,

Father, † Son, and Holy Spirit,
your sins are forgiven.
Rest in God's love.

Amen.

GATHERING HYMN *Let the Whole Creation Cry*

ELW 876



1 Let the whole cre - a - tion cry, "Glo - ry to the Lord on high!"
2 Ser - vants striv - ing for the Lord, proph - ets burn - ing with the word,
3 Men and wom - en, young and old, raise the an - them loud and bold,



Heav'n and earth, a - wake and sing, "Praise to our al - might - y king!"
those to whom the arts be - long add their voic - es to the song.
and let chil - dren's hap - py hearts in this wor - ship take their parts;



Praise God, an - gel hosts a - bove, ev - er bright and fair in love;
Pow'rs of knowl - edge and of law, to the glo - rious cir - cle draw;
from the north to south - ern pole let the might - y cho - rus roll:



sun and moon, lift up your voice; night and stars, in God re - joice.
all who work and all who wait, sing, "The Lord is good and great!"
"Ho - ly, Ho - ly, Ho - ly One; glo - ry be to God a - lone!"

APOSTOLIC GREETING

The grace of our Lord Jesus Christ, ... and the communion of the Holy Spirit be with all!
And also with you.



1 ¡Glo-ria a Dios, glo-ria a Dios, glo - ria en los cie - los!
 1 Glo-ry to God, glo-ry to God, glo - ry in the high - est!



¡Glo-ria a Dios, glo-ria a Dios, glo - ria en los cie - los!
 Glo-ry to God, glo-ry to God, glo - ry in the high - est!



¡A Dios la glo-ria por siem-pre! ¡A Dios la glo-ria por siem-pre!
 To God be glo-ry for - ev - er! To God be glo-ry for - ev - er!



¡A - le - lu - ya! ¡A - mén! ¡A - le - lu - ya! ¡A - mén! ¡A - le - lu - ya! ¡A - mén!
 Al - le - lu - ia! A - men! Al - le - lu - ia! A - men! Al - le - lu - ia! A - men!



¡A - le - lu - ya! ¡A - mén! ¡A - le - lu - ya! ¡A - mén! ¡A - le - lu - ya! ¡A - mén!
 Al - le - lu - ia! A - men! Al - le - lu - ia! A - men! Al - le - lu - ia! A - men!



¡A - le - lu - ya! ¡A - mén! ¡A - le - lu - ya! ¡A - mén!
 Al - le - lu - ia! A - men! Al - le - lu - ia! A - men!

PRAYER OF THE DAY

Teach us, good Lord God, ... we do your will, through Jesus Christ, our Savior and Lord.

Amen.

WORD

Jeremiah 20:7-13

FIRST READING

⁷ O Lord, you have enticed me,
and I was enticed;
you have overpowered me,
and you have prevailed.

I have become a laughingstock all day long;
everyone mocks me.

⁸ For whenever I speak, I must cry out;
I must shout, "Violence and destruction!"
For the word of the Lord has become for me
a reproach and derision all day long.

⁹ If I say, "I will not mention him
or speak any more in his name,"
then within me there is something like a burning fire
shut up in my bones;
I am weary with holding it in,
and I cannot.

¹⁰ For I hear many whispering:
"Terror is all around!
Denounce him! Let us denounce him!"
All my close friends
are watching for me to stumble.

"Perhaps he can be enticed,
and we can prevail against him
and take our revenge on him."

¹¹ But the Lord is with me like a terrifying warrior;
therefore my persecutors will stumble,
and they will not prevail.

They will be greatly shamed,
for they will not succeed.

Their eternal dishonor
will never be forgotten.

¹² O Lord of hosts, you test the righteous;
you see the heart and the mind;
let me see your retribution upon them,
for to you I have committed my cause.

¹³ Sing to the Lord;
praise the Lord!
For he has delivered the life of the needy
from the hands of evildoers.

The word of the Lord.

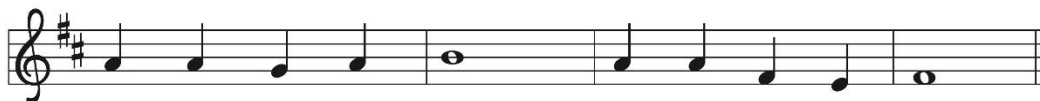
Thanks be to God.

PSALM

Psalm 69:7-10: 11-15: 16-18

The cantor will sing the refrain first, then all are invited to sing the refrain.

*Congregation sings the bolded verses, and the **R** is the refrain sung by all.*



An - swer me, O LORD, for your love is kind.



⁷ Surely, for your sake I have suf- | fered reproach,
and shame has cov- | ered my face.

⁸ **I have become a stranger to | my own kindred,
an alien to my | mother's children.**

⁹ Zeal for your house has eat- | en me up;
the scorn of those who scorn you has fall- | en upon me.

¹⁰ **I humbled my- | self with fasting,
but that was turned to | my reproach. R**

¹¹ I put on | sackcloth also,
and became a by- | word among them.

¹² **Those who sit at the gate mur- | mur against me,
and the drunkards make | songs about me.**

¹³ But as for me, this is my prayer to you, at the time you have | set, O Lord:
"In your great mercy, O God, answer me with your un- | failing help.

¹⁴ **Save me from the mire; do not | let me sink;
let me be rescued from those who hate me and out of | the deep waters. R**

¹⁵ Let not the torrent of waters wash over me, neither let the deep swal- | low me up;
do not let the pit shut its | mouth upon me.

¹⁶ **Answer me, O Lord, for your | love is kind;**

in your great compassion, | turn to me.

¹⁷Hide not your face | from your servant;
be swift and answer me, for I am | in distress.

¹⁸**Draw near to me | and redeem me;**
because of my enemies de- | liver me. R

SECOND READING

Romans 6:1b-11

^{1b}Should we continue in sin in order that grace may increase? ²By no means! How can we who died to sin go on living in it? ³Do you not know that all of us who were baptized into Christ Jesus were baptized into his death? ⁴Therefore we were buried with him by baptism into death, so that, just as Christ was raised from the dead by the glory of the Father, so we also might walk in newness of life.

⁵For if we have been united with him in a death like his, we will certainly be united with him in a resurrection like his. ⁶We know that our old self was crucified with him so that the body of sin might be destroyed, so we might no longer be enslaved to sin. ⁷For whoever has died is freed from sin. ⁸But if we died with Christ, we believe that we will also live with him. ⁹We know that Christ, being raised from the dead, will never die again; death no longer has dominion over him. ¹⁰The death he died, he died to sin once for all, but the life he lives, he lives to God. ¹¹So you also must consider yourselves dead to sin and alive to God in Christ Jesus.

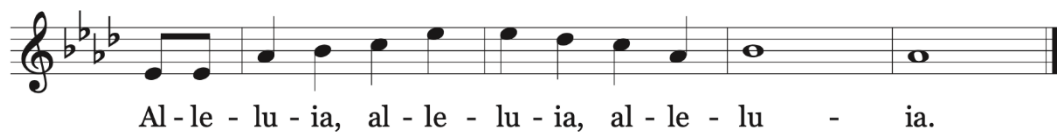
The word of the Lord.

Thanks be to God.

CHILDREN'S LESSON

GOSPEL ACCLAMATION *Alleluia*

Anne Krentz Organ



GOSPEL

Matthew 10:24-39

The holy gospel according to Matthew.

Glory to you, O Lord.

Jesus said to the twelve: ²⁴ “A disciple is not above the teacher nor a slave above the master; ²⁵ it is enough for the disciple to be like the teacher and the slave like the master. If they have called the master of the house Beelzebul, how much more will they malign those of his household!

²⁶ “So have no fear of them, for nothing is covered up that will not be uncovered and nothing secret that will not become known. ²⁷ What I say to you in the dark, tell in the light, and what you hear whispered, proclaim from the housetops. ²⁸ Do not fear those who kill the body but cannot kill the soul; rather, fear the one who can destroy both soul and body in hell. ²⁹ Are not two sparrows sold for a penny? Yet not one of them will fall to the ground apart from your Father. ³⁰ And even the hairs of your head are all counted. ³¹ So do not be afraid; you are of more value than many sparrows.

³² “Everyone, therefore, who acknowledges me before others, I also will acknowledge before my Father in heaven, ³³ but whoever denies me before others, I also will deny before my Father in heaven.

³⁴ “Do not think that I have come to bring peace to the earth; I have not come to bring peace but a sword.

³⁵ For I have come to set a man against his father,
and a daughter against her mother,
and a daughter-in-law against her mother-in-law,
³⁶ and one’s foes will be members of one’s own household.

³⁷ “Whoever loves father or mother more than me is not worthy of me, and whoever loves son or daughter more than me is not worthy of me, ³⁸ and whoever does not take up the cross and follow me is not worthy of me. ³⁹ Those who find their life will lose it, and those who lose their life for my sake will find it.”

The gospel of the Lord.

Praise to you, O Christ.

SERMON

Pastor Jordan

HYMN OF THE DAY *Children of the Heavenly Father*

ELW 781



1 Chil - dren of the heav'n-ly Fa - ther safe - ly in his bo - som gath - er;
2 God his own doth tend and nour-ish, in his ho - ly courts they flour - ish.
3 Nei - ther life nor death shall ev - er from the Lord his chil - dren sev - er;
4 Though he giv - eth or he tak - eth, God his chil - dren ne'er for - sak - eth;



nest - ling bird nor star in heav - en such a ref - uge e'er was giv - en.
From all e - vil things he spares them, in his might - y arms he bears them.
un - to them his grace he show - eth, and their sor - rows all he know - eth.
his the lov - ing pur - pose sole - ly to pre - serve them pure and ho - ly.

YOUTH MISSION TRIP SEND OFF (5:00 p.m.)

Friends in Christ, you have been created in the image of God and called beloved.

We honor God in everyone we meet, by seeing the image of God in them too.

As we go on this service-learning trip, may God open our hearts to give as well as receive.

May we honor Christ in all people and serve with humility and love.

Whether you are travelling to Alabama or supporting and praying for us from home, help us all to live the fruits of the Spirit – love, joy, peace, patience, kindness, goodness, faithfulness, gentleness, self-control.

May we always mirror the love of Jesus in our words, actions, and relationships.

May the Lord bless you and keep you. May Christ go before you, beside you, and within you. May the Holy Spirit guide your steps and use you to share God's love wherever you go.

Amen. We are made for this.

APOSTLES' CREED (9:30 a.m.)

**I believe in God, the Father almighty,
creator of heaven and earth.**

**I believe in Jesus Christ, God's only Son, our Lord,
who was conceived by the Holy Spirit,
born of the virgin Mary,
suffered under Pontius Pilate,
was crucified, died, and was buried;
he descended to the dead.
On the third day he rose again;
he ascended into heaven,
he is seated at the right hand of the Father,
and he will come to judge the living and the dead.**

**I believe in the Holy Spirit,
the holy catholic church,**

**the communion of saints,
the forgiveness of sins,
the resurrection of the body,
and the life everlasting. Amen.**

PRAYERS OF INTERCESSION

God of grace,
hear our prayer.

PEACE

The peace of Christ be with you always!
And also with you!

MEAL

OFFERING *Let the Whole Creation Cry*

arr. Anne Krentz Organ

JUNE MISSION: Lutheran World Relief: Financial gifts are sent to Lutheran World Relief to support the purchase and shipping of extra blankets and quilts in addition to the many made by the Needle and Thimble group.

Two Options to Use Your Phone to Give



1. Point your QR reader at the left QR graphic where you can login and track your giving. Or visit stlukeslutheran.org and click the Online Giving tab on the right side of the page.
2. Point your QR reader at the right QR graphic to make an **online one-time** gift. Or visit omella.com/o/izfds.



OFFERING PRAYER

Loving God, ... name of Jesus, through the Spirit abiding with us now and forever.
Amen.

GREAT THANKSGIVING

The Lord be with you.

And also with you.

Lift up your hearts.

We lift them to the Lord.

Let us give thanks to the Lord our God.

It is right to give our thanks and praise.

WORDS OF INSTITUTION

LORD'S PRAYER

Our Father, who art in heaven, hallowed be thy name,
thy kingdom come, thy will be done, on earth as it is in heaven.
Give us this day our daily bread;
and forgive us our trespasses, as we forgive those who trespass against us;
and lead us not into temptation, but deliver us from evil.
For thine is the kingdom, and the power, and the glory, forever and ever. Amen.

INVITATION TO COMMUNION

Heaven has come near. Come, share in the feast!

COMMUNION

All who are baptized are welcome to receive Holy Communion, regardless of church affiliation. Receive our Lord in the bread and wine of this meal. Juice and individually wrapped, gluten-free wafers are available from the server by request.

LAMB OF GOD

ELW pg. 182



O Lamb of . . . God, you . . . take a-way the sin of the world; . . .



have . . . mer-cy up - on us, have . . . mer-cy up - on us.



O Lamb of . . . God, you . . . take a-way the sin of the world; . . .



have . . . mer-cy up - on us, have . . . mer-cy up - on us.



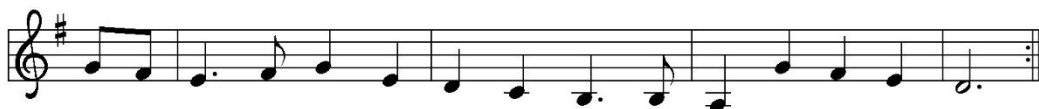
- 1 "I was there to hear your born-ing cry, I'll be there when you are old.
- 2 "When you heard the won-der of the Word I was there to cheer you on;
- 3 "In the mid-dle a - ges of your life, not too old, no lon - ger young,



I re - joiced the day you were bap-tized to see your life un - fold.
 you were raised to praise the liv - ing Lord, to whom you now be - long.
 I'll be there to guide you through the night, com-plete what I've be - gun.



I was there when you were but a child, with a faith to suit you well;
 If you find some-one to share your time and you join your hearts as one,
 When the eve - ning gent - ly clos - es in and you shut your wea - ry eyes,



in a blaze of light you wan-dered off to find where de-mons dwell."
 I'll be there to make your vers - es rhyme from dusk till ris - ing sun."
 I'll be there as I have al - ways been, with just one more sur - prise."



- 4 "I was there to hear your born-ing cry, I'll be there when you are old.



I re - joiced the day you were bap-tized to see your life un - fold."

TABLE BLESSING

PRAYER AFTER COMMUNION

Compassionate God, ... name of Jesus, through the Spirit nourishing us now and forever.

Amen.

SENDING

BLESSING

Creator, Redeemer, Sustainer, † one God, bless, heal, and hold you today and always.

Amen.

SENDING HYMN *If You But Trust in God to Guide You*

ELW 769



1 If you but trust in God to guide you with gen - tle
2 What gain is there in anx - ious weep - ing, in help - less
3 The Lord our rest - less hearts is hold - ing, in peace and
4 Sing, pray, and keep God's ways un - swerv - ing, of - fer your



hand through all your ways, you'll find that God is there be -
an - ger and dis - tress? If you are in your Sav - ior's
qui - et - ness con - tent. We rest in God's good will un -
ser - vice faith - ful - ly. Trust heav - en's word; though un - de -



side you when cross - es come, in try - ing days. Trust then in
keep - ing, in sor - row will he love you less? For Christ who
fold - ing, what wis - dom from on high has sent. God, who has
serv - ing, you'll find God's prom - ise true to be. This is our



God's un - chang - ing love; build on the rock that will not move.
took for you a cross will bring you safe through ev - 'ry loss.
cho - sen us by grace, knows ver - y well the fears we face.
con - fi - dence in - deed: God nev - er fails in time of need.

ANNOUNCEMENTS

DISMISSAL

Heaven has come near. Go, share the good news!

Thanks be to God.

POSTLUDE *A Summertime Improvisation*

Copyright: *Children of the Heavenly Father*. Words: Ernst W. Olson © 1925, 1953 Augsburg Fortress Publishers. *I Was There to Hear Your Morning Cry*. Words and music: John Ylvisaker © 1985 John Ylvisaker. *If You But Trust in God to Guide You*. Words: Evangelical Lutheran Worship © 2006 Augsburg Fortress Publishers. *We Are Baptized in Christ Jesus*. Words and music: John Ylvisaker © 1985 John Ylvisaker. Streamed and reprinted with permission under OneLicense.net #A-727601. All rights reserved.

Gospel acclamation setting by Anne Krentz Organ, © 2022 Lutheran Summer Music Academy and Festival. Permission granted for local use.

Liturgies from sundaysandseasons.com License: SB127834 © 2026 Augsburg Fortress. All rights reserved.

IN OUR PRAYERS

In Sympathy: For the families of Linette Heis and Keith Jurkowski.

For needs to be met: For peace among nations, for our country, for those impacted by violence, for teachers, students, & parents, for first responders, for all who struggle with uncertainty, for caregivers, for the Hope Center, for all who are ill, Bishop Curry, Sandy H, Sue O, Gloria B, Gwen K, Sarah M, Sue B, Jillian R, Baby BK, Chris R, Brad S, Baby W, Baby Evelyn, Kathi, Tom, Terese, Beth B, Kory B, Judy W, Karen R, Michael R, Gerald H, Dave M, Jim B, PJ, Jamie F, Kayla N, David L, Josh, Diane, Steve D, Greg C, Shane R, Kurt, Dorothy J, Sue C, Janice H, Brian M, Laurie B, Mary S, Chris, Lisa S, April, Sarah E, James, Anthony Y, Sai R, David M, Debby B, Isabella, Steve, Joan B, Kenzie D, Rusty B, Tim M, Dakota, Dale R, Sally, Linda M, Joyce, Kathi, Dan D, Mary M, John F, Jan N, Dave M, Chris B, Katie L, Chuck, Andy S, Carey, Dave, Betty, Connor W, Liz S, Terri I, Mark, Janet J, John K and Vi E.

For our partner churches in the Meru Diocese in Tanzania: For the challenges they face. For God's continued blessings on our partnership.

For those serving in the military: Gary Bjerke, Owen Hager, Jim Kieso Jr, Daniel Krueger, and Dmitriy Lando.

ANNOUNCEMENTS

Friendship Pads

Please be sure to sign in on the friendship pads located in each pew.

Hospitality Thank You

The second part of June's Mt. Meru Coffee Hour is Sponsored by and in honor of Sarah's Circle!

Please Come and Help Serve a Meal

St. Luke's will be sponsoring a community outreach program that serves a hot meal to those in need, "Loaves and Fishes," at the Hope Center on Sunday, June 28, from 1:00 to 3:30 p.m. at 101 W. Broadway, Waukesha, 53186. Volunteers are needed to help prep food, serve, and clean up. If you can help, please sign up on the sheet in Sign Up Central. If you have any questions, please contact Sandy Hendrickson, (262) 613-0610 or papamh@sbcglobal.net.

No Worship July 4

This year, July 4 falls on a Saturday. As it is the 250th anniversary of the signing of the Declaration of Independence, there will be no 5:00 p.m. worship service that day. Join us on Sunday, July 5, for worship at the 9:30 a.m. service.

Summer Pick-Up Choir Returns

Our summer pick-up choir returns again this year! This is a time to just come and sing, try out singing at St. Luke's, or just keep your vocal skills up over the summer. We will gather at 8:45 a.m. to learn something to sing in worship at our 9:30 a.m. service. All ages are invited to join us and sing! We will gather on July 12, and August 16. For more information, contact Michael Schaner, Director of Music Ministries at mschaner@stlukeslutheran.org.

Tee Up for Hope

Join the Hope Center for their annual *Tee Up for Hope* golf outing at the Broadlands Golf Club on Monday, July 13. There will be team scramble events with prizes, hole events, raffles, auctions, lunch buffet and post-golf heavy hors d'oeuvres social. For tickets go to <https://hopecenterwi.org/event/tee-up-for-hope-golf-outing-2026/>

Saturday Social July 18

Join the Youth on Saturday, July 18 for dinner, conversation and a little laughter following the Saturday service. July's Theme is - It's summer, time to kick back and relax. We will have pulled pork and fixings with smore's for dessert. Assuming Mother Nature cooperates, we will be outside. Sign up at Sign Up Central.

Are You Receiving Our Weekly *Connections* Email

Each week we send out an email called *Connections*. It includes announcements, links, information about worship schedules, community events, and so much more. If you are not receiving it, email the office (office@stlukeslutheran.org) to be added to the email list.

Plants & Pints Night for Young Adults (Ages 20–40)

Join us on Wednesday, July 22, from 6:30–8:30 p.m. at The Tap Yard in Waukesha for a creative evening as we make SoCuteLent at the succulent bar! Imagine relaxing in a beer garden, enjoying beverages, sharing laughter, and crafting a succulent planter while taking in the outdoors. You'll be guided step-by-step, starting with a 4" succulent, then customizing your planter with colorful gravel and a variety of decorative elements like stones, marbles, shells, and driftwood. Each participant will also receive exclusive wire leaves handcrafted by Two Mikes Art Factory, along with a bamboo or feather butterfly to complete the design. The succulent bar will be open from 6:30–8:30 p.m., and the cost is \$35 (plus tax). Please note this workshop is non-refundable, but if you're unable to attend, you may send someone in your place. You can reserve tickets in advance or pay at the door if space is available. To purchase advance tickets, search "Two Mikes Art Factory" on Facebook and visit the event registration page. For more information or to let someone know you plan to attend, please contact Pastor Maren.

Guest Preacher: Héctor Colón, President and CEO, Lutheran Social Services of Wisconsin and Upper Michigan on July 26, 2026, at the 9:30 a.m. Service

Our Mission of the Month for July is Lutheran Social Services of Wisconsin and Upper Michigan. On Sunday, July 26 Héctor Colón, President and CEO of LSS, will be our guest preacher. Francesca Kempfer, Director of Advancement for LSS, will also join us that day. Héctor Colón has served as President and CEO of Lutheran Social Services of Wisconsin and Upper Michigan (LSS) since 2017. Under Colón's visionary and innovative leadership, LSS has adapted new models and business strategies to increase relevancy and operational efficiency. Colón recently was named the Nonprofit Executive of the Year by BizTimes Media and the Hispanic Man of the year by UMOs.

Summer Music Camp 2026

Join us for our summer music camp the week of July 27-31! Our theme is Loving Our Neighbors! Our days are filled with singing, playing all sorts of instruments, Bible stories, and so much more. The morning session is now full, but there's still plenty of space in our full day session for students entering 2nd - 7th grade. Music camp is from 9:00 a.m. - 3:00 p.m. each day. Registration is \$100 per child and can be completed online at <https://stlukeslutheran.org/music-camp-registration/>. For more information, contact Mr. Schaner, Director of Music Ministries.

Online Giving

To start giving electronically or make changes to your on-line giving, please log on to our website and click on "Online Giving" on the far right. You can also fill out the paper authorization form and return it to the church office. Paper authorization forms are available at the Welcome Center.

Your Help Is Needed: Roof and Van Campaign

This rainy spring has brought many leaks to our attention. Due to the age of the roof, now more than 20 years old, and the numerous issues, we are following the guidance to replace the pitched roof over both the sanctuary and the chapel. This will be an expensive, but necessary endeavor to maintain our beautiful worship spaces. In addition, our 21-year-old church and childcare van also needs replacement. We are faced with two large capital purchases at the same time. Your financial help is much needed. If you would like to help offset the cost of the new chapel and sanctuary roof, please indicate "New Roof" on your offering. If you would like to help fund the new church and childcare van, please indicate "New Van" on your offering. Any additional support you can give would be most appreciated. Thank you in advance for your faithful stewardship!

CLM Scrip Fundraiser

We have some exciting news! Our St. Luke's Child Life Ministries Scrip Account through RaiseRight is active! What is Scrip? It's a place where you can purchase gift cards and CLM will get a portion of your purchase kicked back! Going shopping? Get a gift card to pay for your purchase and donate to CLM at the same time, it's that easy! You can order your gift card and have it instantly available to use, right from your phone. There are two easy ways to sign up, follow this link OR scan the QR code. Share with your friends and relatives by sending them a text or email!

There's no cost or upcharge, just purchasing gift cards that helps CLM.

<https://www.raiseright.com/enroll?enrollCode=FD7A8962586>



Do You Have a Talent to Share

Our prayer basket keeps running empty, and we would love your help keeping it full! If you enjoy working with yarn, cloth, wood, or other materials, we invite you to share your talents. You may create your own idea or find something online that you would like to try. If you are interested in starting a monthly group meeting on Thursday's, please let Gloria Brechlin know, she would love to hear from you! Also, the Prayer Shawl ministry is still alive and well. To everyone who works with yarn, we truly appreciate all that you do. Keep up the wonderful work! Please contact Gloria Brechlin with any questions, (262) 547-8096.

Stay Connected with What's Ahead

Do you want to know what's happening in the days and weeks ahead at our church? Visit our Church Calendar on the church website! It's the best place to find upcoming events, ministry activities, service times, and special announcements. Simply go to our website and click on Calendar to stay updated and get involved. We look forward to seeing you at our upcoming events!

Prayer Team

Scripture encourages us to bear one another's burdens. Lifting others up in prayer is a way to do that. The need for prayer and for people to pray grows daily! Please consider becoming a member of our Prayer Team. There are no meetings or phone calls to make. You will receive prayer requests via email and are asked to pray daily. No specific prayer, although suggestions are given in the email you receive. Simply ask God to guide you. Did you know you can pray any time and any place? How about while brushing your teeth or showering, during your kids' practices or games, while waiting for appointments? All that is asked is that you pray daily. Please consider joining this vital ministry. For information, contact Laurie Rohrwasser.

Committing to Worship

We are encouraging each other all year long to commit/recommit to deeper engagement in worship. Perhaps you've drifted away from regular worship attendance. Come back and let God feed you in the Word and at the table of Holy Communion. Maybe while you're here, you might be called to participate more fully in the liturgies we speak and sing together. Commit yourself/yourselves to deeper engagement in worship. The more you engage God in worship, the deeper your relationship with Him grows.

Extending Care for You

Our pastors make visits and calls to people in need of pastoral care. If you would like pastoral care, please call the church office at (262) 542-2545. This is especially important if you are going through life-transitions, illness, or trauma. If you change your address or enter a care facility or rehab center, please update the church office.

Communication is Important

Communicating when, where, what, why, and how is important. If there is something you would like communicated in the weekly bulletin, weekly *Connections* email, or the monthly Epistle newsletter, it's as easy as writing the announcement and emailing it to office@stlukeslutheran.org or stopping by the office with your article by the deadlines. The deadlines for the bulletin and *Connections* are 12:00 p.m. the Tuesday before the Thursday or the weekend you would want the information in *Connections* or bulletin. The deadline for the monthly Epistle newsletter is the 15th of the month unless the 15th falls on a weekend or holiday; then, the deadline is the Friday before. If you have any questions, please reach out either by email or call the church office at (262) 542-2545.

This Week at St. Luke's

Sunday, June 21, 2026

9:30 a.m. Worship
6:00 p.m. Men's A.A.

Monday, June 22, 2026

8:00 a.m. Amigos
6:30 p.m. Al-Anon

Tuesday, June 23, 2026

7:00 p.m. Personnel Committee

Wednesday, June 24, 2026

7:00 p.m. N.A.

7:00 p.m. Square Dancers

Thursday, June 25, 2026

7:00 p.m. The Broad Highway A.A.

Saturday, June 27, 2026

5:00 p.m. Worship

Sunday, June 28, 2026

9:30 a.m. Worship
1:00 p.m. Loaves & Fishes
Hope Center
6:00 p.m. Men's A.A.

Serving this Weekend:

	5:00	9:30
Preaching:	Pastor Jordan	Pastor Jordan
Presiding:	Pastor Hooper	Pastor Jordan
Music:	Michael Schaner	Michael Schaner
Assisting Minister:	Teresa Jahn	Darius Outlaw
Lector:	Dan Jorvig	Diane Voit
Bread Baker:	Diane Willgrubs	Diane Willgrubs
Acolyte:	Kylie Smith	Olivia Houle
Communion Asst:	Tracy Craft	Ginny Dietzler
		Lori Chandler
Ushers:	RJ Hildebran	Mark Bjerke
	Kathy Fontaine	Bob Kabitzke
		Paul Pilon
		Mike Holland
		Mark Bloede
		Dennis & Diane Voite
Altar Care:	Susan Klabunde	Carolynn Fish
Worship Tech:		John Christiansen