



## Third Sunday after Pentecost

Saturday, June 13, 2026, 5:00 p.m.

Sunday, June 14, 2026, 9:30 a.m.

St. Luke's Lutheran Church, Waukesha, WI

[www.stlukeslutheran.org](http://www.stlukeslutheran.org) [office@stlukeslutheran.org](mailto:office@stlukeslutheran.org) (262) 542-2545

**Helping people make life-changing connections with God  
through Jesus Christ.**

**Third Sunday after Pentecost**  
Saturday, June 13, 2026, 5:00 p.m.  
Sunday, June 14, 2026, 9:30 a.m.

**Notes for Worship**

- Hymnals: ELW: cranberry ACS purple.
- Individually wrapped gluten-free communion wafers are available upon request.
- We invite children of all ages to be in worship with us. Children are welcome to use the Pray-Ground in front of the church on the piano side as a comfortable space to experience worship. If you feel your child(ren) are being too disruptive, you are welcome to move into the Chapel.

**GATHERING**

**PRELUDE** (9:30 a.m.) *Sonata, Op. 49, No. 2*

Ludwig von Beethoven

**CONFESSION AND FORGIVENESS**

Blessed be the holy Trinity, † one God,  
whose compassion endures forever.

**Amen.**

Let us confess our sin to God.

*Silence is kept for reflection.*

Compassionate God,

**we confess to you all our sins.**

**Our burden is heavy, and we cannot free ourselves.**

**In your mercy, call us back to you.**

**Your yoke is easy and your burden is light.**

**Restore us to dwell in your peace.**

**In Christ's name we pray,**

**Amen.**

Jesus says, "Come to me,  
all you who are weary  
and are carrying heavy burdens,  
and I will give you rest."

In the name of God,  
 Father, † Son, and Holy Spirit,  
 your sins are forgiven.  
 Rest in God's love.

**Amen.**

**GATHERING HYMN** *Praise to the Lord, the Almighty*

ELW 858



1 Praise to the Lord, the Al - might - y, the King of cre - a - tion!  
 2 Praise to the Lord, who o'er all things is won - drous - ly reign - ing  
 3 Praise to the Lord, who will pros - per your work and de - fend you;  
 4 Praise to the Lord! Oh, let all that is in me a - dore him!



O my soul, praise him, for he is your health and sal - va - tion!  
 and, as on wings of an ea - gle, up - lift - ing, sus - tain - ing.  
 sure - ly his good - ness and mer - cy shall dai - ly at - tend you.  
 All that has life and breath, come now with prais - es be - fore him!



Let all who hear now to his tem - ple draw near,  
 Have you not seen all that is need - ful has been  
 Pon - der a - new what the Al - might - y can do  
 Let the a - men sound from his peo - ple a - gain.



join - ing in glad ad - o - ra - tion!  
 sent by his gra - cious or - dain - ing?  
 if with his love he be - friend you.  
 Glad - ly for - ev - er a - dore him!

**APOSTOLIC GREETING**

The grace of our Lord Jesus Christ, ... and the communion of the Holy Spirit be with all!  
**And also with you.**



1 ¡Glo-ria a Dios, glo-ria a Dios, glo - ria en los cie - los!  
 1 Glo-ry to God, glo-ry to God, glo - ry in the high - est!



¡Glo-ria a Dios, glo-ria a Dios, glo - ria en los cie - los!  
 Glo-ry to God, glo-ry to God, glo - ry in the high - est!



¡A Dios la glo-ria por siem-pre! ¡A Dios la glo-ria por siem-pre!  
 To God be glo-ry for - ev - er! To God be glo-ry for - ev - er!



¡A - le - lu - ya! ¡A - mén! ¡A - le - lu - ya! ¡A - mén! ¡A - le - lu - ya! ¡A - mén!  
 Al - le - lu - ia! A - men! Al - le - lu - ia! A - men! Al - le - lu - ia! A - men!



¡A - le - lu - ya! ¡A - mén! ¡A - le - lu - ya! ¡A - mén! ¡A - le - lu - ya! ¡A - mén!  
 Al - le - lu - ia! A - men! Al - le - lu - ia! A - men! Al - le - lu - ia! A - men!



¡A - le - lu - ya! ¡A - mén! ¡A - le - lu - ya! ¡A - mén!  
 Al - le - lu - ia! A - men! Al - le - lu - ia! A - men!

**PRAYER OF THE DAY**

God of compassion, ... the good news of your Son, Jesus Christ, our Savior and Lord.

**Amen.**

**MUSICAL OFFERING (9:30 a.m.) *Song of Hope***

Robert Hobby  
 Summer pick-up Choir

## WORD

### FIRST READING

Exodus 19:2-8a

<sup>2</sup>The Israelites journeyed from Rephidim, entered the wilderness of Sinai, and camped in the wilderness; Israel camped there in front of the mountain.<sup>3</sup>Then Moses went up to God; the Lord called to him from the mountain, “Thus you shall say to the house of Jacob and tell the Israelites: <sup>4</sup>‘You have seen what I did to the Egyptians and how I bore you on eagles’ wings and brought you to myself. <sup>5</sup>Now, therefore, if you obey my voice and keep my covenant, you shall be my treasured possession out of all the peoples. Indeed, the whole earth is mine, <sup>6</sup>but you shall be for me a priestly kingdom and a holy nation.’ These are the words that you shall speak to the Israelites.”

<sup>7</sup>So Moses went, summoned the elders of the people, and set before them all these words that the Lord had commanded him. <sup>8a</sup>The people all answered as one, “Everything that the Lord has spoken we will do.”

The word of the Lord.

**Thanks be to God.**

### PSALM

Psalm 100

(5:00 p.m.) *Read responsively by verse.*

(9:30 a.m.) *The cantor will sing the refrain first, then all are invited to sing the refrain.*

*Congregation sings the bolded verses, and the **R** is the refrain sung by all.*

We are God's peo - ple and the sheep of God's pas - ture.

The image shows two staves of musical notation in G major (one sharp) and 4/4 time. The first staff contains the melody for the first line of the psalm, with lyrics 'We are God's peo - ple and the sheep of God's pas - ture.' The second staff contains the melody for the second line of the psalm, which is a simple accompaniment consisting of a few notes.

<sup>1</sup>Make a joyful noise to the Lord, | all you lands!

<sup>2</sup>Serve the Lord with gladness; come into God's presence | with a song.

<sup>3</sup>**Know that the Lord is God, our maker to whom | we belong;**  
**we are God's people and the sheep | of God's pasture. R**

<sup>4</sup>Enter the gates of the Lord with thanksgiving and the | courts with praise;  
give thanks and bless God's | holy name.

<sup>5</sup>**Good indeed is the Lord, whose steadfast love is | everlasting,**  
**whose faithfulness endures from | age to age. R**

## SECOND READING

Romans 5:1-8

<sup>1</sup>Since we are justified by faith, we have peace with God through our Lord Jesus Christ, <sup>2</sup>through whom we have obtained access to this grace in which we stand, and we boast in our hope of sharing the glory of God. <sup>3</sup>And not only that, but we also boast in our afflictions, knowing that affliction produces endurance, <sup>4</sup>and endurance produces character, and character produces hope, <sup>5</sup>and hope does not put us to shame, because God's love has been poured into our hearts through the Holy Spirit that has been given to us.

<sup>6</sup>For while we were still weak, at the right time Christ died for the ungodly. <sup>7</sup>Indeed, rarely will anyone die for a righteous person—though perhaps for a good person someone might actually dare to die. <sup>8</sup>But God proves his love for us in that while we still were sinners Christ died for us.

The word of the Lord.

**Thanks be to God.**

## CHILDREN'S LESSON

### GOSPEL ACCLAMATION *Alleluia*

Anne Krentz Organ

Al - le - lu - ia, al - le - lu - ia.

Al - le - lu - ia, al - le - lu - ia, al - le - lu - ia.

## GOSPEL

Matthew 9:35-10:8

The holy gospel according to Matthew.

**Glory to you, O Lord.**

<sup>35</sup>Jesus went about all the cities and villages, teaching in their synagogues and proclaiming the good news of the kingdom and curing every disease and every sickness. <sup>36</sup>When he saw the crowds, he had compassion for them because they were harassed and helpless, like sheep without a shepherd. <sup>37</sup>Then he said to his disciples, “The harvest is plentiful, but the laborers are few; <sup>38</sup>therefore ask the Lord of the harvest to send out laborers into his harvest.”

<sup>10:1</sup>Then Jesus summoned his twelve disciples and gave them authority over unclean spirits, to cast them out, and to cure every disease and every sickness. <sup>2</sup>These are the

names of the twelve apostles: first, Simon, also known as Peter, and his brother Andrew; James son of Zebedee and his brother John; <sup>3</sup> Philip and Bartholomew; Thomas and Matthew the tax collector; James son of Alphaeus and Thaddaeus; <sup>4</sup> Simon the Cananaean and Judas Iscariot, the one who betrayed him.

<sup>5</sup> These twelve Jesus sent out with the following instructions: “Do not take a road leading to gentiles, and do not enter a Samaritan town, <sup>6</sup> but go rather to the lost sheep of the house of Israel. <sup>7</sup> As you go, proclaim the good news, ‘The kingdom of heaven has come near.’ <sup>8</sup> Cure the sick; raise the dead; cleanse those with a skin disease; cast out demons. You received without payment; give without payment.

The gospel of the Lord.

**Praise to you, O Christ.**

**SERMON**

Pastor Hooper



1 Lord, you give the great com - mis - sion: "Heal the sick and  
 2 Lord, you call us to your ser - vice: "In my name bap -  
 3 Lord, you make the com - mon ho - ly: "This my bod - y,  
 4 Lord, you show us love's true mea - sure: "Fa - ther, what they  
 5 Lord, you bless with words as - sur - ing: "I am with you



preach the word." Lest the church ne - glect its mis - sion,  
 tize and teach." That the world may trust your prom - ise,  
 this my blood." Let us all, for earth's true glo - ry,  
 do, for - give." Yet we heard as pri - vate trea - sure  
 to the end." Faith and hope and love re - stor - ing,



and the gos - pel go un - heard, help us wit - ness  
 life a - bun - dant meant for each, give us all new  
 dai - ly lift life heav - en - ward, ask - ing that the  
 all that you so free - ly give. May your care and  
 may we serve as you in - tend and, a - mid the



to your pur - pose with re - newed in - teg - ri - ty:  
 fer - vor, draw us clos - er in com - mu - ni - ty:  
 world a - round us share your chil - dren's lib - er - ty:  
 mer - cy lead us to a just so - ci - e - ty:  
 cares that claim us, hold in mind e - ter - ni - ty:

*Refrain*



With the Spir - it's gifts em - pow' r us for the work of min - is - try.

## APOSTLES' CREED

I believe in God, the Father almighty,  
creator of heaven and earth.

I believe in Jesus Christ, God's only Son, our Lord,  
who was conceived by the Holy Spirit,  
born of the virgin Mary,  
suffered under Pontius Pilate,  
was crucified, died, and was buried;  
he descended to the dead.  
On the third day he rose again;  
he ascended into heaven,  
he is seated at the right hand of the Father,  
and he will come to judge the living and the dead.

I believe in the Holy Spirit,  
the holy catholic church,  
the communion of saints,  
the forgiveness of sins,  
the resurrection of the body,  
and the life everlasting. Amen.

## PRAYERS OF INTERCESSION

God of grace,  
hear our prayer.

## PEACE

The peace of Christ be with you always!  
And also with you!

## MEAL

OFFERING (9:30 a.m.) *Praise to the Lord, the Almighty* setting, Anne Krentz Organ

**JUNE MISSION: Lutheran World Relief:** Financial gifts are sent to Lutheran World Relief to support the purchase and shipping of extra blankets and quilts in addition to the many made by the Needle and Thimble group.

## Two Options to Use Your Phone to Give



1. Point your QR reader at the left QR graphic where you can login and track your giving. Or visit [stlukeslutheran.org](http://stlukeslutheran.org) and click the Online Giving tab on the right side of the page.
2. Point your QR reader at the right QR graphic to make an **online one-time** gift. Or visit [omella.com/o/izfds](http://omella.com/o/izfds).



### OFFERING PRAYER

Loving God, ... name of Jesus, through the Spirit abiding with us now and forever.

**Amen.**

### GREAT THANKSGIVING

The Lord be with you.

**And also with you.**

Lift up your hearts.

**We lift them to the Lord.**

Let us give thanks to the Lord our God.

**It is right to give our thanks and praise.**

### WORDS OF INSTITUTION

#### LORD'S PRAYER

Our Father, who art in heaven,

**hallowed be thy name,**

**thy kingdom come,**

**thy will be done,**

**on earth as it is in heaven.**

**Give us this day our daily bread;**

**and forgive us our trespasses,**

**as we forgive those**

**who trespass against us;**

**and lead us not into temptation,**

**but deliver us from evil.**

**For thine is the kingdom,**

**and the power, and the glory,**

**forever and ever. Amen.**

## INVITATION TO COMMUNION

Heaven has come near.

Come, share in the feast!

## COMMUNION

*All who are baptized are welcome to receive Holy Communion, regardless of church affiliation. Receive our Lord in the bread and wine of this meal. Juice and individually wrapped, gluten-free wafers are available from the server by request.*

## LAMB OF GOD

ELW pg. 182



O Lamb of . . . God, you . . . take a-way the sin of the world; . . .



have . . . mer-cy up - on us, have . . . mer-cy up - on us.



O Lamb of . . . God, you . . . take a-way the sin of the world; . . .



have . . . mer-cy up - on us, have . . . mer-cy up - on us.



O Lamb of . . . God, you . . . take a-way the sin of the world; . . .



grant us your peace, grant us your peace.



1 I love to tell the sto - ry of un - seen things a - bove,  
 2 I love to tell the sto - ry: how pleas - ant to re - peat  
 3 I love to tell the sto - ry, for those who know it best



of Je - sus and his glo - ry, of Je - sus and his love.  
 what seems, each time I tell it, more won - der - ful - ly sweet!  
 seem hun - ger - ing and thirst - ing to hear it like the rest.



I love to tell the sto - ry, be - cause I know it's true;  
 I love to tell the sto - ry, for some have nev - er heard  
 And when, in scenes of glo - ry, I sing the new, new song,



it sat - is - fies my long - ings as noth - ing else would do.  
 the mes - sage of sal - va - tion from God's own ho - ly word.  
 I'll sing the old, old sto - ry that I have loved so long.

*Refrain*



I love to tell the sto - ry; 'twill be my theme in glo - ry



to tell the old, old sto - ry of Je - sus and his love.

HYMN *For the Troubles and the Sufferings*



For the trou - bles and the suf - f'ings of the world,

God, we call up - on your mer - cy: the  
whole cre - a - tion's la - bor - ing in pain! Lend an  
ear . . . to the ris - ing cry for help from op -  
pressed and hope - less peo - ple: Come! Has - ten your sal -  
va - tion, heal - ing love! We pray for peace,  
the bless - ed peace that comes from mak - ing  
jus - tice, to cov - er and em - brace us.  
Have mer - cy, Lord! We pray for pow'r,  
the pow'r that will sus - tain your peo - ple's wit - ness:  
un - til your king - dom comes. *Ky - ri - e - le - i - son!*

## TABLE BLESSING

## PRAYER AFTER COMMUNION

Compassionate God, ... name of Jesus, through the Spirit nourishing us now and forever.

Amen.

## SENDING

### BLESSING

Creator, Redeemer, Sustainer, † one God, bless, heal, and hold you today and always.

Amen.

### SENDING HYMN *In Christ Called to Baptize*

ELW 575



1 In Christ called to bap - tize, we wit - ness to grace  
2 In Christ called to ban - quet, one ta - ble we share,  
3 In Christ called to wit - ness, by grace we will preach  
4 U - nite us, a - noint us, O Spir - it of love,



and gath - er a peo - ple from each land and race.  
a ha - ven of wel - come, a cir - cle of care.  
the life - giv - ing gos - pel; God's love we will teach.  
for you are with - in us, a - round us, a - bove.



In deep, flow - ing wa - ters, we share in Christ's death,  
Al - though we are man - y, we share in one bread.  
By grace may our liv - ing give proof to our praise  
E - quip us for ser - vice with gifts you be - stow.



then, ris - ing to new life, give thanks with each breath.  
One cup of thanks - giv - ing pro - claims Christ, our head.  
in cost - ly com - pas - sion re - flect - ing Christ's ways.  
In Christ is our call - ing. In Christ may we grow.

## ANNOUNCEMENTS

### DISMISSAL

Heaven has come near. Go, share the good news!

**Thanks be to God.**

### POSTLUDE (9:30 a.m.) *A Summertime Improvisation*

Copyright: *For the Troubles/Pelas dores deste mundo*. Words and music: Rodolfo Gaede Neto, GBG Musik © 1998, 2004 Augsburg Fortress Publishers. *In Christ Called to Baptize*. Words: Ruth Duck © 1995 The Pilgrim Press. *LOBE DEN HERREN – piano*. Music: Anne Krentz Organ © 2009 Augsburg Fortress Publishers. *Lord, You Give the Great Commission – ABBOT'S LEIGH*. Words and music: Jeffery Rowthorn, Cyril V. Taylor © 1942, 1970, 1978 Hope Publishing Company. *ST. DENIO – piano*. Music: Anne Krentz Organ © 2007 Augsburg Fortress Publishers. Streamed and reprinted with permission under OneLicense.net #A-727601. All rights reserved.

Gospel acclamation setting by Anne Krentz Organ, © 2022 Lutheran Summer Music Academy and Festival. Permission granted for local use.

Liturgies from [sundaysandseasons.com](http://sundaysandseasons.com) License: SB127834 © 2026 Augsburg Fortress. All rights reserved.

## IN OUR PRAYERS

**For needs to be met:** For peace among nations, for our country, for those impacted by violence, for teachers, students, & parents, for first responders, for all who struggle with uncertainty, for caregivers, for the Hope Center, for all who are ill, Bishop Curry, Tom, Linette H, Sharon L, Keith J, Baby BK, Chris R, Brad S, Baby W, Baby Evelyn, Kathi, Terese, Beth B, PJ, Kory B, Judy W, Karen R, Michael R, Gerald H, Dave M, Jamie F, Kayla N, Jim B, David L, Josh, Diane, Steve D, Greg C, Shane R, Kurt, Dorothy J, Janice H, Sue C, Brian M, Laurie B, Mary S, Chris, Lisa S, April, Sarah E, James, Anthony Y, David M, Debby B, Liz S, Isabella, Steve, Sai R, Joan B, Kenzie D, Rusty B, Tim M, Dakota, Dale R, Sally, Linda M, Joyce, Kathi, Dan D, Mary M, John F, Jan N, Dave M, Chris B, Katie L, Chuck, Andy S, Carey, Dave, Betty, Connor W, Terri I, Mark, Janet J, and John K, and Vi E.

**For our partner churches in the Meru Diocese in Tanzania:** For the challenges they face. For God's continued blessings on our partnership.

**For those serving in the military:** Gary Bjerke, Owen Hager, Jim Kieso Jr, Daniel Krueger, and Dmitriy Lando.

## ANNOUNCEMENTS

### Friendship Pads

Please be sure to sign in on the friendship pads located in each pew.

## **50+ Anniversary**

We give thanks for Richard & Kathy Runte celebrating their 55th wedding anniversary on Friday, June 19!

## **Hospitality Thank You**

The first half of June's Mt. Meru Coffee Hour is sponsored by Pat Efflandt in honor of her daughter, Susie Powell, and her June birthday.

## **Celebrating Generosity and Mission Support**

We have been recognized by the Greater Milwaukee Synod of the Evangelical Lutheran Church in America for our generous mission support. From February 2025 through January 2026, our congregation contributed a remarkable \$48,459.00 toward ministry beyond our church. These contributions help sustain vital synod and churchwide ministries, supporting outreach, service, and faith-building efforts both near and far. We join the synod leadership in expressing heartfelt thanks to all members of St. Luke's for your faithful generosity and ongoing commitment to God's work. Your support truly makes a difference!

## **Flat Jesus Returns**

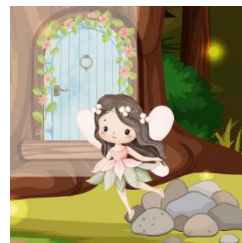
Last year, Flat Jesus, based on Flat Stanley, traveled with us to many places around the world. He returns again this year to join us on our travels! You can pick up your own Flat Jesus to decorate at the Welcome Center. Take him with you on your trips, pose with him in photos, and then send your photos to Shari Higgins, at [shigs@stlukeslutheran.org](mailto:shigs@stlukeslutheran.org), to be shared with the congregation on Facebook and on the screens around the church.

## **Summer Pick-Up Choir Returns**

Our summer pick-up choir returns again this year! This is a time to just come and sing, try out singing at St. Luke's, or just keep your vocal skills up over the summer. We will gather at 8:45 a.m. to learn something to sing in worship at our 9:30 a.m. service. All ages are invited to join us and sing! We will gather on June 14, July 12, and August 16. For more information, contact Michael Schaner, Director of Music Ministries at [mschaner@stlukeslutheran.org](mailto:mschaner@stlukeslutheran.org).

## **Attention Young Adults Ages 20-40**

You're invited on Monday, June 15, to Art Night from 6:00 – 8:00 p.m. in the Faith Room at church. Our own Kayla Wilson will be leading us in painting positivity stones and building mini fairy doors. No experience necessary, just come and have fun! Please RSVP to Pastor Maren [pastormaren@stlukeslutheran.org](mailto:pastormaren@stlukeslutheran.org) by Friday, June 12, so we can purchase the right number of supplies. Friends are always welcome!



### **Come For Fellowship, Sarah Circle Bible Study**

Sarah Circle, a Bible Study group, *usually* meets the third Monday of every month. This month's meeting is **Tuesday, June 16**, at 1:00 p.m. at the home of Virginia Schreib – 313 Standing Stone Dr. 23-61, Waukesha 53189, (262) 719-2474. All women are welcome to come. For more information or questions, please call Virginia.

### **Please Come and Help Serve a Meal**

St. Luke's will be sponsoring a community outreach program that serves a hot meal to those in need, "Loaves and Fishes," at the Hope Center on Sunday, June 28, from 1:00 to 3:30 p.m. at 101 W. Broadway, Waukesha, 53186. Volunteers are needed to help prep food, serve, and clean up. If you are able to help, please sign up on the sheet in Sign Up Central. If you have any questions, please contact Sandy Hendrickson, (262) 613-0610 or [papamh@sbcglobal.net](mailto:papamh@sbcglobal.net).

### **No Worship July 4**

This year, July 4 falls on a Saturday. As it is the 250<sup>th</sup> anniversary of the signing of the Declaration of Independence, there will be no 5:00 p.m. worship service that day. Join us on Sunday, July 5, for worship at the 9:30 a.m. service.

### **Tee Up for Hope**

Join the Hope Center for their annual *Tee Up for Hope* golf outing at the Broadlands Golf Club on Monday, July 13. There will be team scramble events with prizes, hole events, raffles, auctions, lunch buffet and post-golf heavy hors d'oeuvres social. For tickets go to <https://hopecenterwi.org/event/tee-up-for-hope-golf-outing-2026/>

### **Summer Music Camp 2026**

Join us for our summer music camp the week of July 27-31! Our theme is Loving Our Neighbors! Our days are filled with singing, playing all sorts of instruments, Bible stories, and so much more. The morning session is now full, but there's still plenty of space in our full day session for students entering 2<sup>nd</sup> - 7<sup>th</sup> grade. Music camp is from 9:00 a.m. - 3:00 p.m. each day. Registration is \$100 per child and can be completed online at <https://stlukeslutheran.org/music-camp-registration/>. For more information, contact Mr. Schaner, Director of Music Ministries.

### **Needle & Thimble**

Please join Needle and Thimble on Tuesdays at 8:30 a.m. They meet every week unless there is no school, but WILL be meeting this upcoming week, June 16 AND the following week June 23. They will then break for summer. Everyone is welcome. You don't need to be able to sew. There are other things that can be done. Please call Marilyn Olson if you have questions, (262) 844-2519.

## **Your Help Is Needed: Roof and Van Campaign**

This rainy spring has brought many leaks to our attention. Due to the age of the roof, now more than 20 years old, and the numerous issues, we are following the guidance to replace the pitched roof over both the sanctuary and the chapel. This will be an expensive, but necessary endeavor to maintain our beautiful worship spaces. In addition, our 21-year-old church and childcare van also needs replacement. We are faced with two large capital purchases at the same time. Your financial help is much needed. If you would like to help offset the cost of the new chapel and sanctuary roof, please indicate "New Roof" on your offering. If you would like to help fund the new church and childcare van, please indicate "New Van" on your offering. Any additional support you can give would be most appreciated. Thank you in advance for your faithful stewardship!

## **CLM Scrip Fundraiser**

We have some exciting news! Our St. Luke's Child Life Ministries Scrip Account through RaiseRight is active! What is Scrip? It's a place where you can purchase gift cards and CLM will get a portion of your purchase kicked back! Going shopping? Get a gift card to pay for your purchase and donate to CLM at the same time, it's that easy! You can order your gift card and have it instantly available to use, right from your phone. There are two easy ways to sign up, follow this link OR scan the QR code. Share with your friends and relatives by sending them a text or email!

There's no cost or upcharge, just purchasing gift cards that helps CLM.

<https://www.raiseright.com/enroll?enrollCode=FD7A8962586>



## **Do You Have a Talent to Share**

Our prayer basket keeps running empty, and we would love your help keeping it full! If you enjoy working with yarn, cloth, wood, or other materials, we invite you to share your talents. You may create your own idea or find something online that you would like to try. If you are interested in starting a monthly group meeting on Thursday's, please let Gloria Brechlin know, she would love to hear from you! Also, the Prayer Shawl ministry is still alive and well. To everyone who works with yarn, we truly appreciate all that you do. Keep up the wonderful work! Please contact Gloria Brechlin with any questions, (262) 547-8096.

## **Stay Connected with What's Ahead**

Do you want to know what's happening in the days and weeks ahead at our church? Visit our Church Calendar on the church website! It's the best place to find upcoming events, ministry activities, service times, and special announcements. Simply go to our website and click on Calendar to stay updated and get involved. We look forward to seeing you at our upcoming events!

## **Are You Receiving Our Weekly *Connections* Email**

Each week we send out an email called *Connections*. It includes announcements, links, information about worship schedules, community events, and so much more. If you are not receiving it, email the office ([office@stlukeslutheran.org](mailto:office@stlukeslutheran.org)) to be added to the email list.

## **Prayer Team**

Scripture encourages us to bear one another's burdens. Lifting others up in prayer is a way to do that. The need for prayer and for people to pray grows daily! Please consider becoming a member of our Prayer Team. There are no meetings or phone calls to make. You will receive prayer requests via email and are asked to pray daily. No specific prayer, although suggestions are given in the email you receive. Simply ask God to guide you. Did you know you can pray any time and any place? How about while brushing your teeth or showering, during your kids' practices or games, while waiting for appointments? All that is asked is that you pray daily. Please consider joining this vital ministry. For information, contact Laurie Rohrwasser.

## **Communication is Important**

Communicating when, where, what, why, and how is important. If there is something you would like communicated in the weekly bulletin, weekly *Connections* email, or the monthly Epistle newsletter, it's as easy as writing the announcement and emailing it to [office@stlukeslutheran.org](mailto:office@stlukeslutheran.org) or stopping by the office with your article by the deadlines. The deadlines for the bulletin and *Connections* are 12:00 p.m. the Tuesday before the Thursday or the weekend you would want the information in *Connections* or bulletin. The deadline for the monthly Epistle newsletter is the 15<sup>th</sup> of the month unless the 15<sup>th</sup> falls on a weekend or holiday; then, the deadline is the Friday before. If you have any questions, please reach out either by email or call the church office at (262) 542-2545.

## **Online Giving**

To start giving electronically or make changes to your on-line giving, please log on to our website and click on "Online Giving" on the far right. You can also fill out the paper authorization form and return it to the church office. Paper authorization forms are available at the Welcome Center.

## **Extending Care for You**

Our pastors make visits and calls to people in need of pastoral care. If you would like pastoral care, please call the church office at (262) 542-2545. This is especially important if you are going through life-transitions, illness, or trauma. If you change your address or enter a care facility or rehab center, please update the church office.

## This Week at St. Luke's

### Sunday, June 14, 2026

8:45 a.m. Summer Pick-Up Choir  
9:30 a.m. Worship  
10:30 a.m. Cinnamon Roll Sunday  
10:30 a.m. Mt. Meru Coffee  
6:00 p.m. Men's A.A.

### Monday, June 15, 2026

8:00 a.m. Amigos  
1:00 p.m. Sarah Circle  
6:00 p.m. Young Adult Gathering  
6:30 p.m. Al-Anon

### Tuesday, June 16, 2026

8:30 a.m. Needle and Thimble  
5:30 p.m. Finance Committee

6:30 p.m. Church Council

### Wednesday, June 17, 2026

7:00 p.m. N.A.

### Thursday, June 18, 2026

5:30 p.m. Youth Mission Trip Sendoff  
At St Stephen the Martyr  
Lutheran Church

7:00 p.m. The Broad Highway A.A.

### Saturday, June 20, 2026

5:00 p.m. Worship  
5:00 p.m. Youth Mission Trip Sendoff

### Sunday, June 21, 2026

9:30 a.m. Worship  
6:00 p.m. Men's A.A.

### Serving this Weekend:

Preaching:	5:00 Pastor Hooper	9:30 Pastor Hooper
Presiding:	Pastor Hooper	Pastor Jordan
Music:	Teresa Ledford	Michael Schaner
Assisting Minister:	Curt Steinquist	Teresa Jahn
Lector:	Kathy Fontaine	Lori Chandler
Bread Baker:	Art Olson	Art Olson
Acolyte:	Eden Tonn	DevinReigh Endries
Communion Asst:		Chris Jackson
Ushers:	RJ Hildebran Harold Bloch	Jim Kieso Steve Wiley Debbie Lathrop Bob Kabitzke Carolynn Fish
Altar Care:	Susan Klabunde	Marilyn Christiansen Sandy Hendrickson Sharon Wood Sharon Spivek Eli Larson