



Third Sunday after Epiphany

Saturday, January 24, 2026, 5:00 p.m.

Sunday, January 25, 2026, 8:15 & 10:30 a.m.

St. Luke's Lutheran Church, Waukesha, WI

www.stlukeslutheran.org office@stlukeslutheran.org (262) 542-2545

**Helping people make life-changing connections with God
through Jesus Christ.**

Third Sunday after Epiphany

Saturday, January 24, 2026, 5:00 p.m.

Sunday, January 25, 2026, 8:15 & 10:30 a.m.

Notes for Worship

- Hymns: ELW: cranberry ACS purple.
- Individually wrapped gluten-free communion wafers are available upon request.
- We invite children of all ages to be in worship with us. Children are welcome to use the Pray-Ground in front of the church on the piano side as a comfortable space to experience worship. If you feel your child(ren) are being too disruptive, you are welcome to move into the Chapel.

GATHERING

PRELUDE *Lift Every Voice and Sing*

setting, Wayne L. Wold

THANKSGIVING FOR THE WORD

Let us pray ... from chaos, and brought life into being. For your Word of life, O God,
we give you thanks and praise.

By your Word ... home from exile, wisdom for life with you. For your Word of life, O God,
we give you thanks and praise.

Through Jesus, ... by death, the way of your self-giving love. For your Word of life, O God,
we give you thanks and praise.

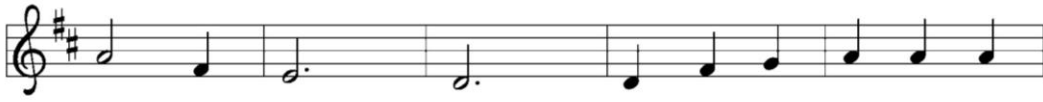
Send your Spirit of truth, ... with you and the Holy Spirit, be honor and glory forever.
Amen.

GATHERING HYMN *I Want to Walk as a Child of the Light*

ELW 815



1 I want to walk as a child of the light. I want to
2 I want to see . . . the bright-ness of God. I want to
3 I'm look - ing for . . . the com - ing of Christ. I want to



fol - low Je - sus. God set the stars to give
 look at Je - sus. Clear Sun of righ - teous-ness,
 be with Je - sus. When we have run . . . with



light to the world. The star of my life is Je - sus.
 shine on my path, and show me the way to the Fa - ther.
 pa - tience the race, we shall know the joy of Je - sus.

Refrain



In him there is no dark-ness at all. The night and the



day are both a - like. The Lamb is the light of the



cit - y of God. Shine in my heart, Lord Je - sus.

PRAYER OF THE DAY

Lord God, ... that come through the cross of your Son, Jesus Christ, our Savior and Lord.
Amen.

MUSICAL OFFERING

(5:00 p.m.) *Shine Your Light*

(8:15 & 10:30 a.m.) *I Want to Walk as a Child of the Light*

Terry D. Taylor
 Men's Chorus
 Cathy Moklebust
 Godsbells

WORD

FIRST READING

Isaiah 9:1-4

- ²The people who walked in darkness
have seen a great light;
those who lived in a land of deep darkness—
on them light has shined.
- ³You have multiplied exultation;
you have increased its joy;
they rejoice before you
as with joy at the harvest,
as people exult when dividing plunder.
- ⁴For the yoke of their burden
and the bar across their shoulders,
the rod of their oppressor,
you have broken as on the day of Midian.

The word of the Lord.

Thanks be to God.

PSALM *spoken responsively*

Psalms 27:1, 4-9

- ¹The Lord is my light and my salvation; whom then shall I fear?
The Lord is the stronghold of my life; of whom shall I be afraid?
- ⁴**One thing I ask of the Lord; one thing I seek;
that I may dwell in the house of the Lord all the days of my life; to gaze upon
the beauty of the Lord and to seek God in the temple.**
- ⁵For in the day of trouble God will give me shelter,
hide me in the hidden places of the sanctuary, and raise me high upon a rock.
- ⁶**Even now my head is lifted up above my enemies who surround me.
Therefore I will offer sacrifice in the sanctuary, sacrifices of rejoicing; I will
sing and make music to the Lord.**
- ⁷Hear my voice, O Lord, when I call;
have mercy on me and answer me.
- ⁸**My heart speaks your message “Seek my face.”
Your face, O Lord, I will seek.**
- ⁹Hide not your face from me, turn not away from your servant in anger.
Cast me not away you have been my helper; forsake me not, O God of my salvation.

SECOND READING

1 Corinthians 1:10-18

¹⁰ Now I appeal to you, brothers and sisters, by the name of our Lord Jesus Christ, that all of you be in agreement and that there be no divisions among you but that you be knit together in the same mind and the same purpose. ¹¹ For it has been made clear to me by Chloe's people that there are quarrels among you, my brothers and sisters. ¹² What I mean is that each of you says, "I belong to Paul," or "I belong to Apollos," or "I belong to Cephas," or "I belong to Christ." ¹³ Has Christ been divided? Was Paul crucified for you? Or were you baptized in the name of Paul? ¹⁴ I thank God that I baptized none of you except Crispus and Gaius, ¹⁵ so that no one can say that you were baptized in my name. ¹⁶ I did baptize also the household of Stephanas; beyond that, I do not know whether I baptized anyone else. ¹⁷ For Christ did not send me to baptize but to proclaim the gospel—and not with eloquent wisdom, so that the cross of Christ might not be emptied of its power.

¹⁸ For the message about the cross is foolishness to those who are perishing, but to us who are being saved it is the power of God.

The word of the Lord.

Thanks be to God.

CHILDREN'S LESSON

GOSPEL ACCLAMATION

Al - le - lu - ia, al - le - lu - ia,
al - le - lu - ia, al - le - lu - ia.

GOSPEL

Matthew 4:12-23

The holy gospel according to Matthew.

Glory to you, O Lord.

¹² Now when Jesus heard that John had been arrested, he withdrew to Galilee. ¹³ He left Nazareth and made his home in Capernaum by the sea, in the territory of Zebulun and Naphtali, ¹⁴ so that what had been spoken through the prophet Isaiah might be fulfilled:

¹⁵ "Land of Zebulun, land of Naphtali,
on the road by the sea, across the Jordan, Galilee of the gentiles—

¹⁶ the people who sat in darkness
 have seen a great light,
 and for those who sat in the region and shadow of death
 light has dawned.”

¹⁷ From that time Jesus began to proclaim, “Repent, for the kingdom of heaven has come near.”

¹⁸ As he walked by the Sea of Galilee, he saw two brothers, Simon, who is called Peter, and Andrew his brother, casting a net into the sea—for they were fishers. ¹⁹ And he said to them, “Follow me, and I will make you fishers of people.” ²⁰ Immediately they left their nets and followed him. ²¹ As he went from there, he saw two other brothers, James son of Zebedee and his brother John, in the boat with their father Zebedee, mending their nets, and he called them. ²² Immediately they left the boat and their father and followed him.

²³ Jesus went throughout all Galilee, teaching in their synagogues and proclaiming the good news of the kingdom and curing every disease and every sickness among the people.

The gospel of the Lord.
Praise to you, O Christ.

SERMON

Pastor Hooper

HYMN OF THE DAY *Will You Come and Follow Me*

ELW 798



1 “Will you come and fol - low me if I but call
 2 “Will you leave your - self be - hind if I but call
 3 “Will you let the blind - ed see if I but call
 4 “Will you love the you you hide if I but call
 5 Lord, your sum - mons ech - oes true when you but call



your name? Will you go where you don't
 your name? Will you care for cruel and
 your name? Will you set the pris - 'ners
 your name? Will you quell the fear in -
 my name. Let me turn and fol - low



know and nev - er be the same?
 kind and nev - er be the same?
 free and nev - er be the same?
 side and nev - er be the same?
 you and nev - er be the same.



Will you let my love be shown, will you let my
 Will you risk the hos - tile stare, should your life at -
 Will you kiss the lep - er clean, and do such as
 Will you use the faith you've found to re - shape the
 In your com - pa - ny I'll go where your love and



name be known, will you let my life be
 tract or scare? Will you let me an - swer
 this un - seen, and ad - mit to what I
 world a - round, through my sight and touch and
 foot - steps show. Thus I'll move and live and



grown in you and you in me?"
 pray'r in you and you in me?"
 mean in you and you in me?"
 sound in you and you in me?"
 grow in you and you in me.

PRAYERS OF INTERCESSION

Merciful God,
 receive our prayer.

PEACE

The peace of Christ be with you always!
 And also with you!

MEAL

OFFERING *I Love to Tell the Story*

setting, Nancy Raabe

JANUARY MISSION: LUTHERAN DISASTER RESPONSE: This organization of the ELCA brings God's hope, healing, and renewal to people whose lives have been disrupted by disaster in the United States and around the world.

Two Options to Use Your Phone to Give



1. Point your QR reader at the left QR graphic where you can login and track your giving. Or visit stlukeslutheran.org and click the Online Giving tab on the right side of the page.
2. Point your QR reader at the right QR graphic to make an **online one-time** gift. Or visit omella.com/o/izfds.



OFFERING PRAYER

God of majesty, ... us with the reign of God come near, Jesus Christ, our Savior and Lord.
Amen.

GREAT THANKSGIVING

The Lord be with you.

And also with you.

Lift up your hearts.

We lift them to the Lord.

Let us give thanks to the Lord our God.

It is right to give our thanks and praise.

THANKSGIVING AT THE TABLE

Blessed are you, O holy God:

you are the Life and Light of all.

By your powerful word you created all things.

Through the prophets you called your people to be a light to the nations.

Blessed are you for Jesus, your Son.

He is your Light, shining in our darkness and revealing to us your mercy and might.

In the night in which he was betrayed, ... Do this for the remembrance of me.

Again, after supper, he took the cup, ... Do this for the remembrance of me.

Remembering, therefore,
his preaching and healing,
his dying and rising,
and his promise to come again,

**we await that day when all the universe
will rejoice in your holy and life-giving light.**

By your Spirit bless us and this meal,
that, refreshed with this heavenly food,
**we may be light for the world,
revealing the brilliance of your Son.**

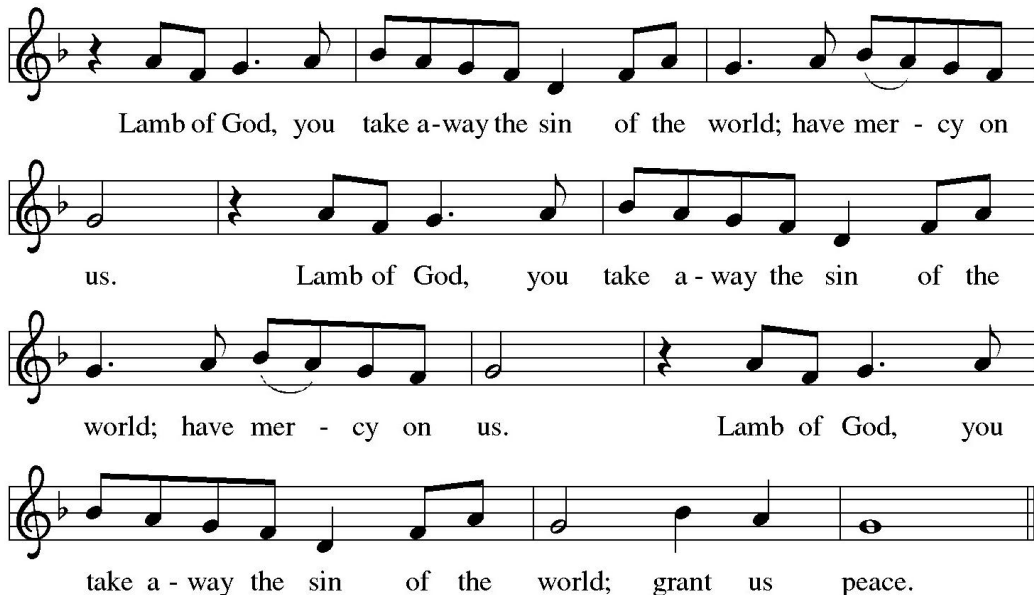
Through him all glory and honor is yours,
Almighty Father, with the Holy Spirit,
in your holy Church,
both now and forever.

Amen.

LORD'S PRAYER

**Our Father, who art in heaven, hallowed be thy name,
thy kingdom come, thy will be done, on earth as it is in heaven.
Give us this day our daily bread;
and forgive us our trespasses, as we forgive those who trespass against us;
and lead us not into temptation, but deliver us from evil.
For thine is the kingdom, and the power, and the glory, forever and ever. Amen.**

LAMB OF GOD



Lamb of God, you take a-way the sin of the world; have mer - cy on
us. Lamb of God, you take a - way the sin of the
world; have mer - cy on us. Lamb of God, you
take a - way the sin of the world; grant us peace.

COMMUNION

All who are baptized are welcome to receive Holy Communion, regardless of church affiliation. Receive our Lord in the bread and wine of this meal. Juice and individually wrapped, gluten-free wafers are available from the server by request.

DISTRIBUTION HYMNS *I Love to Tell the Story*

ELW 661



1 I love to tell the sto - ry of un - seen things a - bove,
2 I love to tell the sto - ry: how pleas - ant to re - peat
3 I love to tell the sto - ry, for those who know it best



of Je - sus and his glo - ry, of Je - sus and his love.
what seems, each time I tell it, more won - der - ful - ly sweet!
seem hun - ger - ing and thirst - ing to hear it like the rest.



I love to tell the sto - ry, be - cause I know it's true;
I love to tell the sto - ry, for some have nev - er heard
And when, in scenes of glo - ry, I sing the new, new song,



it sat - is - fies my long - ings as noth - ing else would do.
the mes - sage of sal - va - tion from God's own ho - ly word.
I'll sing the old, old sto - ry that I have loved so long.

Refrain



I love to tell the sto - ry; 'twill be my theme in glo - ry



to tell the old, old sto - ry of Je - sus and his love.



1 I come with joy, a child of God, for - giv - en, loved, and
 2 I come with Chris - tians far and near to find, as all are
 3 As Christ breaks bread, and bids us share, each proud di - vi - sion
 4 The Spir - it of the ris - en Christ, un - seen, but ev - er
 5 To - geth - er met, to - geth - er bound by all that God has



free, the life of Je - sus to re - call in
 fed, the new com - mu - ni - ty of love in
 ends. The love that made us, makes us one, and
 near, is in such friend - ship bet - ter known, a -
 done, we'll go with joy, to give the world the



love laid down for me, in love laid down for me.
 Christ's com - mu - nion bread, in Christ's com - mu - nion bread.
 strang - ers now are friends, and strang - ers now are friends.
 live a - mong us here, a - live a - mong us here.
 love that makes us one, the love that makes us one.

TABLE BLESSING

PRAYER AFTER COMMUNION

Radiant God, ... to all we have seen and heard, through Jesus Christ, our Savior and Lord.

Amen.

SENDING

BLESSING

May the triune God, ... and tuned your heart for praise † bless you now and forever.

Amen.

SENDING HYMN *Lift Every Voice and Sing*

ELW 841



1 Lift ev - 'ry voice and sing till earth and heav - en ring,
 2 Ston - y the road we trod, bit - ter the chas - t'ning rod,
 3 God of our wea - ry years, God of our si - lent tears,



ring with the har - mo - nies of lib - er - ty.
 felt in the days when hope un - born had died;
 thou who hast brought us thus far on the way;



Let our re - joic - ing rise high as the lis - t'ning skies,
 yet with a stead - y beat, have not our wea - ry feet
 thou who hast by thy might led us in - to the light,



let it re - sound loud as the roll - ing sea.
 come to the place for which our par - ents sighed?
 keep us for - ev - er in the path, we pray.



Sing a song full of the faith that the dark past has taught us;
 We have come o - ver a way that with tears has been wa - tered;
 Lest our feet stray from the plac - es, our God, where we met thee;



sing a song full of the hope that the pres - ent has brought us;
 we have come, tread - ing our path through the blood of the slaugh - tered,
 lest, our hearts drunk with the wine of the world, we for - get thee;



fac - ing the ris - ing sun of our new day be - gun,
out from the gloom - y past, till now we stand at last
shad - owed be - neath thy hand, may we for - ev - er stand,



let us march on till vic - to - ry is won.
where the white gleam of our bright star is cast.
true to our God, true to our na - tive land.

ANNOUNCEMENTS

DISMISSAL

Go in peace. Do justice. Love mercy.

Thanks be to God.

POSTLUDE *Intrada*

Grayston Ives

Copyright: *HANKEY-organ*. Music: John Ferguson © 1997 Augsburg Fortress Publishers. *HANKEY – piano*. Music: Nancy Raabe © 2008 Augsburg Fortress Publishers. *I Come with Joy*. Words: Brian Wren © 1971, 1995 Hope Publishing Company. *I Want to Walk as a Child of the Light*. Words and music: Kathleen Thomerson © 1970, 1975 Celebration. *I Want to Walk as a Child of the Light – choral*. Music: Kathleen Thomerson, Kristina Langlois © 2007 Augsburg Fortress Publishers. *Intrada*. Music: Grayston Ives © 1977 Banks Music Publications. *LIFT EVERY VOICE AND SING – organ*. Music: Wayne L. Wold © 2003 Augsburg Fortress Publishers. *LIFT EVERY VOICE AND SING – organ*. Music: Aaron David Miller © 2009 Augsburg Fortress Publishers. *The Summons*. Words and music: John Bell © 1987 Iona Community/WGRG (North America). Streamed and reprinted with permission under OneLicense.net #A-727601. All rights reserved.

Liturgies from sundaysandseasons.com License: SB127834 © 2025 Augsburg Fortress. All rights reserved.

IN OUR PRAYERS

In thanksgiving: For Pastor Maren Hooper and her ministry among us.

For needs to be met: For peace among nations, for our country, for those impacted by violence, teachers, students, and parents, first responders, for all who struggle with uncertainty, caregivers, Hope Center, all who are ill, Bishop Curry, Brad S, Brian M, Ian L, Laurie B, Darrell, Joanne H, Mary S, Jude, Chris, Lisa S, Kevin R, Patsy H, Chris R, April, Sarah E, James, Shane R, Karen R, Anthony Y, Jose G, David M, Debby B, Isabella, Steve, Pat H, Harold B, Joan B, Donna L, Sai R, Baby W, Joan B, Kenzie D, Rusty B, Tim M, Sway S, Dakota, Dale R, Sally, Paul M, Linda M, Joyce, Kathi, Mike M, Jan C, Annette E, Dan D, Kayla, Dawn TW, Mary M, Dave, Jamie F, Shelby H, Alexis M, John F, Jan N, Michael B, Anna and Don F, Bunnie, Dave M, Chris B, Katie L, Chuck, Andy S, Kathy J, Bob, Kathy, Barb C, Carey, Dave, Betty, Isabella, Connor W, Liz S, Terri I, Judy, Janet J, Mark, John K, and Vi E.

For our partner churches in the Meru Diocese in Tanzania: For the challenges they face. For God's continued blessings on our partnership.

For those serving in the military: Gary Bjerke, Owen Hager, Jim Kieso Jr, Daniel Krueger, and Dmitriy Lando.

NOTES FOR WORSHIP

- Need to enter/leave the sanctuary while the service is underway? Please find times that are least distracting to others to do so. Appropriate times could be during a hymn, the peace, or the offering. Please try to avoid movement during divine moments of sacred action (when God has promised to be among us in special ways): in the reading/preaching of Scripture and in the Sacraments of Baptism and Holy Communion. And remember, there is a lot of grace for families and small children – their voices, wiggles, unexpected movements are part of the joy of living in community together.
- Our 8:15 a.m. services are livestreamed to the web via Facebook and our website, where they are archived for later viewing. Leaders and active assistants/participants in the service appear in the livestream. It is also possible that you and/or your children may be seen in our livestream.
- Please wear a nametag, especially to welcome visitors. It's another way we can be welcoming and help us to say hello to each other!

ANNOUNCEMENTS

Friendship Pads

Please be sure to sign in on the friendship pads located in each pew.

Ambo Flowers

This weekend's flowers are given to the glory of God.

Hospitality Thank You

January's Mt. Meru Coffee Hour is sponsored Chris Jackson for God's blessings and hope in the new year and peace to all.

50+ Anniversary

We give thanks for Rob and Kris Riedel celebrating their 56th wedding anniversary on January 30!

What's Our Spending Plan?

Learn more about what your gifts to St. Luke's makes possible. Discover more about the finances of the church. The finance committee will present information about the church's spending plan at a listening session on Sunday, February 1, at 9:30 a.m. This session will be held in the chapel.

Annual Meeting

St. Luke's Lutheran will gather for its Annual Meeting Sunday, February 8, following the completion of the first service, around 9:15 a.m. At the annual meeting we'll hold elections, approve the budget, and more. See the Annual Report for the complete agenda, available in late January 2026.

Music & Fine Arts presents The Wisconsin Philharmonic

This Sunday, January 25, The Wisconsin Philharmonic returns for their annual JanBoree family concert. There will be an instrument petting zoo at 1:00 p.m., and the concert is at 2:00 p.m. Tickets are \$10 for adults and free for children. Tickets are available at the door.

Youth-Led Worship

Join the St. Luke's Youth for their annual youth-led worship the weekend of January 31/ February 1, at all services. They will be giving the sermon and leading worship. You won't want to miss their hard work! And after worship on Saturday, join us for our Saturday Social mealtime! Any questions, contact Cari at youth@stlukeslutheran.org.

Saturday Social

Join the Youth on Saturday, January 31, for dinner, conversation and a little laughter after the 5:00 p.m. service. The menu for January is pulled pork and shredded chicken plus all the fixings.

Join us in supporting Hope Center!

On Tuesday, January 27 from 4:00–8:00 p.m. The Chocolate Factory in Waukesha and Pewaukee will donate 25% of all proceeds to help the Hope Center continue serving the community. Grab a delicious sub or a scoop of ice cream and make a difference with every order! Order online on 1/27:

Waukesha – *Order Online*



Pewaukee – *Order Online*



Theology Uncorked

Theology Uncorked's next meeting will be Tuesday, February 3, at 6:00 p.m. at Cantarito's 408 E. Main St., Waukesha. Please come be part of this special group that gathers for uplifting spiritual conversation and good fellowship. This is a "come-as-you-can" group; no commitment required. Please join members of St. Luke's and be part of the lively atmosphere. Consider bringing a neighbor or friend!

The Gathering

The Gathering is a group open to all. We will meet on the first Thursday of the month. Our next meeting will be Thursday, February 5, at 1:00 p.m. in the hospitality area. Come share your hobbies, interests and talents, or just listen. Get to know your fellow church members and even make new friends. If you would like to participate and this day and time doesn't work for you let us know by calling Gloria Brechlin (262) 547-8096.

Help for Hadfield

Thank you to all who have helped fill the needs of Hadfield. The staff and kids appreciate it very much! There will be a school carnival on Saturday, February 7. Volunteers are needed for carnival games, but they also need some prizes kids can earn with their tickets. They have a lot of small things like erasers, pencils, snap bracelets, keychains, tattoos, etc. They could use some bigger things. Anything purchased can be put in the Helping Hadfield box by the welcome center. They also do a silent auction so if anyone wants to donate a basket of some sort that's another idea and way of helping. The sign up is located online at:

<https://www.signupgenius.com/go/10Co94FA8AD2CAAF4C16-61400207-hadfield#/>

If you have any questions, please reach out to Julie Doepke (414) 750-4524 or doepkejulie1@gmail.com.

Join Us for Search Bible Study

Join PJ for Search Bible Study on Wednesdays at 1:00 p.m. Grow in faith and engage in great conversations.

Please Come and Help Serve a Meal

St. Luke's will be sponsoring a community outreach program that serves a hot meal to those in need, "Loaves and Fishes," at the Hope Center on Sunday, February 8, from 1:00 to 3:30 p.m. at 101 W. Broadway, Waukesha, 53186. Volunteers are needed to help prep food, serve, and clean up. If you are able to help, please sign up on the sheets in sign up central. If you have any questions please contact Sandy Hendrickson, (262) 613-0610 or papamh@sbcglobal.net.

Discipleship Training Lenten Mentors/Subs Needed

We are looking for adult volunteers to be Lenten mentors and subs for our awesome D.T. youth. Qualification is a willingness to meet with one of our awesome St. Luke's D.T. youths on Wednesday evenings 6:00-8:00 p.m. during Lent, February 18-March 25, for supper and guided conversation. Then, attend the Lenten service with the youth. If you would be willing to be a mentor or substitute mentor in case of absences, please contact Cari via email at youth@stlukeslutheran.org.

Amigos Need Your Help

The amigos are looking for a man lift to borrow or rent for a couple of hours. If you can help, please contact Ron Pederson, (262) 442-4089.

Prayer Team

Scripture encourages us to bear one another's burdens. Lifting others up in prayer is a way to do that. The need for prayer and for people to pray grows daily! Please consider becoming a member of our Prayer Team. There are no meetings or phone calls. You will receive prayer requests via email and are asked to pray daily. No specific prayer, but suggestions are given. Simply ask God to guide you. Did you know you can pray any time and any place? How about while brushing your teeth or showering, during your kids' practices or games, while waiting for appointments? All that is asked is that you pray daily. Please consider joining this vital ministry. For information, contact Laurie Rohrwasser.

Extending Care for You

Our pastors make visits and calls to people in need of pastoral care. If you would like pastoral care, please call the church office at (262) 542-2545. This is especially important if you are going through life-transitions, illness, or trauma. If you change your address or enter a care facility or rehab center, please update the church office.

Are You Receiving Our Weekly *Connections* Email?

Each week we send out an email called *Connections*. It includes announcements, links, information about worship schedules, community events, and so much more. If you are not receiving it, email the office (office@stlukeslutheran.org) to be added to the email list.

Epistle Online

Are you still receiving a paper copy of The Epistle in the mail? Reading The Epistle online saves paper and postage, allows you to print only the pages you want, and includes live links. If you would like to receive our weekly *Connections* email and our monthly newsletter, The Epistle, by email please contact the church office at (262) 542-2545 or office@stlukeslutheran.org.

Needle & Thimble

Please join Needle and Thimble on Tuesdays at 8:30 a.m. They meet every week unless there is no school. Everyone is welcome. You don't need to be able to sew. There are other things that can be done. Please call Marilyn Olson if you have questions, (262) 844-2519.

Needle & Thimble Needs Your Fabric and Thread

Needle and Thimble is our church sewing group that makes quilts for Lutheran World Relief. We rely on fabric and thread donations; our stash is getting low at this time. If you have fabric (please no little scraps) and / or thread, that you will not need, please consider donating to Needle and Thimble. We especially welcome gently used bedsheets. You may drop off these items anytime at the church office, 8:00 a.m. to 4:00 p.m. Monday through Friday. For more information, please contact Gwen Kieso (262) 442-1749 or Marilyn Olson (262) 844-2519.

Prayer Shawl, There is Still a Need

Busy knitter and crocheters, please do not stop! The items you donate will still be blessed and packaged. Lap robes and prayer shawls are available in the display cabinet located in History Hall. If you know someone who needs a hug from God, feel free to choose an appropriate one from the display. There is a clipboard to record the recipient's name. Share the LOVE! Also, thank you for keeping our prayer patches full! Please feel free to take yarn from the shelves by the History Hall. Please call Gloria for dimensions

Support the Food Pantry

You can make monetary donations to the pantry through their website. Leaders of the pantry want us to know that canned fruits and veggies along with soups have been limited the last few months. When shopping for yourself, pick up some for our neighbors and drop them in the food pantry barrels as you leave the grocery store, or bring to church to drop in the cart by door.

Flower and Coffee Hour Sponsorship

We are very blessed to see so many participating in sponsoring Coffee Hour and Ambo Flowers to honor or celebrate a loved one or a special occasion! If you have signed up on the poster or the Coffee Hour board, please drop off your offerings to cover the sponsorship at the church office, offering plate, or via mail. Please include which sponsorship you are paying in the memo line, envelope detail, or a simple note. The cost of the sponsorships are as follows: Flowers: \$50 per weekend, Coffee Hour: \$30 for 2 weekends or \$55 for a month. If you have any questions, please contact Cindy in the church office. Many thanks!

Online Giving

To start giving electronically or make changes to your on-line giving, please log on to our website and click on "Online Giving" on the far right. You can also fill out the paper authorization form and return it to the church office. Paper authorization forms are available at the Welcome Center.

Communication is Important

Communicating when, where, what, why, and how is important. If there is something you would like communicated in the weekly bulletin, weekly *Connections* email, or the monthly Epistle newsletter, it's as easy as writing the announcement and emailing it to office@stlukeslutheran.org or stopping by the office with your article by the deadlines. The deadlines for the bulletin and *Connections* are 12:00 p.m. the Tuesday before the Thursday or the weekend you would want the information in *Connections* or bulletin. The deadline for the monthly Epistle newsletter is the 15th of the month unless the 15th falls on a weekend or holiday; then, the deadline is the Friday before. If you have any questions, please reach out either by email or call the church office at (262) 542-2545.

2026 Monthly Coffee Hour Sponsorship

The 2026 Monthly Coffee Hour Sponsorship is now available at Sign Up Central. The fee for the coffee hour is \$30 for 2 weekends or \$55 for the whole month. With the sponsorship, you receive the **option** to have displayed up to 12 pictures on the high tables in the narthex and Hospitality area. The picture(s) should be received in the office no later than the 15th of the month prior to your sponsorship month. If no pictures are received, a written acknowledgement of your sponsorship will be displayed. If you have any questions, please contact Sandy Hendrickson (262) 542-5940 or the church office with questions.

This Week at St Luke's

Sunday, January 25, 2026

8:15 & 10:30 a.m. Worship
 9:15 a.m. Discipleship Training & Youth Group
 9:20 a.m. Sunday School
 9:30 a.m. Mt. Meru Coffee Sales
 1:00 p.m. M&FAS Wis Phil Janboree Concert
 6:00 p.m. Men's A.A.

Monday, January 26, 2026

8:00 a.m. Amigos
 6:30 p.m. Al-Anon

Tuesday, January 27, 2026

8:30 a.m. Needle & Thimble
 4:30 p.m. Worship Life Committee
 7:00 p.m. Personnel Committee
 7:00 p.m. W.C.U. Rehearsal

Wednesday, January 28, 2026

1:00 p.m. Search Bible Study
 6:00 p.m. Discipleship Training

6:30 p.m. Godsbells Rehearsal
 7:00 p.m. N.A.
 7:15 p.m. Voices of Faith

Thursday, January 29, 2026

4:30 p.m. Joyful Noise
 5:00 p.m. Community Meal
 7:00 p.m. The Broad Highway A.A.

Saturday, January 31, 2026

2:00 p.m. Discipleship Training & Youth Group Practice for Youth Led Worship
 5:00 p.m. Youth Led Worship
 6:00 p.m. Saturday Social

Sunday, February 1, 2026

8:15 & 10:30 a.m. Youth Led Worship
 9:20 a.m. Sunday School
 9:30 a.m. Spending Plan Meeting
 11:30 a.m. Executive Committee
 6:00 p.m. Men's A.A.

Serving this Weekend:

	5:00	8:15	10:30
Presiding:	Pastor Hooper	Pastor Jordan	Pastor Jordan
Preaching:	Pastor Hooper	Pastor Hooper	Pastor Hooper
Music:	Michael Schaner	Michael Schaner	Michael Schaner
Assisting Minister:	Darius Outlaw	Steve Wiley	Dan Jorvig
Lector:	Ralph Klass	Morgan C Kreuser	Tracy Craft
Bread Baker:	Debbie Kuechler	Debbie Kuechler	Debbie Kuechler
Acolyte:	Sawyer Stangl	DevinReigh Endries	Jon Klawiter
Communion Asst:	Robbin Krueger	Ginny Dietzler	Kathy Pederson
Altar Care:	Susan Klabunde	Jay Fontaine	Don Grossman
		Kathy Fontaine	Candy Grossman
Ushers:	Kathy Fontaine	Patti Walkowicz	Kathy Fontaine
	Susan Klabunde	Jay & Kathy Fontaine	Kirstin Steffens
		Allen Fletcher	Ron Willgrubs
		Trudy Staffeldt	Ron Pederson
Worship Tech:		Braden Davis	