



## **Third Sunday of Advent**

Sunday, December 14, 2025, 10:30 a.m.

St. Luke's Lutheran Church, Waukesha, WI

[www.stlukeslutheran.org](http://www.stlukeslutheran.org) [office@stlukeslutheran.org](mailto:office@stlukeslutheran.org) (262) 542-2545

**Helping people make life-changing connections with God  
through Jesus Christ.**

**Third Sunday of Advent**  
Sunday, December 14, 2025, 10:30 a.m.

**Notes for Worship**

- Hymnals: ELW: cranberry ACS purple.
- Individually wrapped gluten-free communion wafers are available upon request.
- We invite children of all ages to be in worship with us. Children are welcome to use the Pray-Ground in front of the church on the piano side as a comfortable space to experience worship. If you feel your child(ren) are being too disruptive, you are welcome to move into the Chapel.

**GATHERING**

**PRELUDE** *Nun komm' der Heiden Heiland, BWV 659*

J.S. Bach

**LIGHTING OF THE ADVENT WREATH**

We light three candles for the mystery of the Trinity:  
Creator, Christ, and Spirit.

We light three candles as we worship that which we cannot ever fully name.

We light three candles to say YES to the invitation  
to look for the holy in the most surprising of places.

**GATHERING HYMN** *Awake! Awake, and Greet the New Morn*

ELW 242

st. 1 – Angel Choir & Sing for Joy; st. 2-3 – all



1 A - wake! A - wake, and greet the new morn, for  
2 To us, to all in sor - row and fear, Em -  
3 In dark - est night his com - ing shall be, when  
4 Re - joice, re - joice, take heart in the night, though



an - gels her - ald its dawn - ing. Sing out your joy, for  
man - u - el comes a - sing - ing, his hum - ble song is  
all the world is de - spair - ing, as morn - ing light so  
dark the win - ter and cheer - less, the ris - ing sun shall



soon he is born, be - hold! the Child of our long - ing.  
qui - et and near, yet fills the earth with its ring - ing;  
qui - et and free, so warm and gen - tle and car - ing.  
crown you with light, be strong and lov - ing and fear - less.



Come as a ba - by weak and poor, to bring all hearts to -  
mu - sic to heal the bro - ken soul and hymns of lov - ing -  
Then shall the mute break forth in song, the lame shall leap in  
Love be our song and love our prayer and love our end - less



geth - er, he o - pens wide the heav'n - ly door and  
kind - ness, the thun - der of his an - thems roll to  
won - der, the weak be raised a - bove the strong, and  
sto - ry; may God fill ev - 'ry day we share and



lives now in - side us for - ev - er.  
shat - ter all ha - tred and blind - ness.  
weap - ons be bro - ken a - sun - der.  
bring us at last in - to glo - ry.

### **APOSTOLIC GREETING**

The grace of our Lord Jesus Christ, ... and the communion of the Holy Spirit be with all!

**And also with you.**

## INVOCATION *O Holy One*



O — Ho - ly One, we gath - er in your pres - ence  
O — Ho - ly One, the Cov - e - nant of his - t'ry



O — Liv - ing One, we wel - come all to Hope  
O — Liv - ing One, we live and move in you



*You are our God You are our God We are your peo-ple We are your peo-ple*



*You are our God You are our God We are your peo-ple We are your peo-ple*



*A - men A - men*

## KYRIE *O Tender God*



O ten-der God, have mer-cy for you are for us



O liv-ing Christ, have mer-cy for you will heal us



O ten-der God, have mer-cy for you are for us



for you are for us \_\_\_\_\_

## PRAYER OF THE DAY

Lord God, ... most unlikely circumstances, and bear witness to your justice for all,  
**Amen.**

## WORD

### *Mary Said YES*

Presented by St. Luke's Sunday School  
Written by Rev. Andrea Roske-Metcalf

**PROLOGUE** Elizabeth, Zechariah, and John the Baptist

**HYMN** *O Come, All Ye Faithful* ELW 283

**ACT 1** Mary

**HYMN** *My Soul Proclaims Your Greatness* ELW 251

**ACT 2** Joseph

**HYMN** *Away in a Manger* ELW 277

**ACT 3** The Shepherds

**HYMN** *Hark the Herald Angels Sing* ELW 270

**ACT 4** The Wise Ones

**HYMN** *The First Noel* ELW 300

st. 1 – all; st. 2 – low voices; st. 3 – treble voices; st. 4-5 – all

**EPILOGUE** All the Rest of Us

**HYMN** *Go Tell It on the Mountain* ELW 290

## PRAYERS OF INTERCESSION

God of grace,  
**hear our prayer.**

## PEACE

The peace of Christ be with you always!  
And also with you!

## MEAL

OFFERING *People, Look East!*

setting, Anne Krentz Organ

**DECEMBER MISSION: St. Luke's Endowment Fund:** The Endowment Committee distributes money from the fund to local and global charities and provides scholarships to St. Luke's members who are attending college or seminary.

### Two Options to Use Your Phone to Give



1. Point your QR reader at the left QR graphic where you can login and track your giving. Or visit [stlukeslutheran.org](http://stlukeslutheran.org) and click the Online Giving tab on the right side of the page.
2. Point your QR reader at the right QR graphic to make an **online one-time** gift. Or visit [omella.com/o/izfds](http://omella.com/o/izfds).



## OFFERING PRAYER

God of every good gift, ... Grant us glad and generous hearts, ever and always,  
**Amen.**

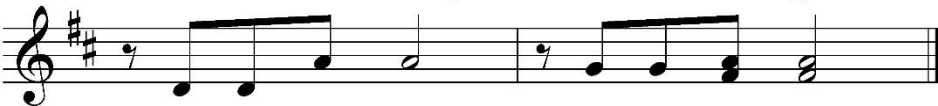
### DIALOGUE *People of God*



One: *Peop-le of God, the Liv-ing One is with you!*  
*Peop-le of God, the Gos-pel is a-mong us!*



Many: **And in your heart, ser-vant of the gos-pel.**  
**A-round the world, wher-ev-er we are gath-ered.**



All: **All wel-come here, all wel-come here.**  
**All wel-come here, all wel-come here.**

## ADVENT PREFACE

It is indeed right... we praise your name and join their unending hymn:

### SANCTUS *Holy, Holy, Holy One*



Ho-ly, ho-ly, ho-ly One, God of pow'r and might-y\_\_ love,  
Ho-ly, ho-ly, ho-ly One, God of earth and hu - man heart



Heav-en and the earth are full of you! Hal - le - lu - jah!  
Heav-en and the earth are full of you, Em - man - u - el.



Our hearts are break - ing o - pen. Save us, \_ ho - san - na.  
Our hearts are break - ing o - pen. Save us, \_ ho - san - na.



O, God of pow'r and might-y love, Help us, \_ ho - san - na.  
Em-man-u - el our broth - er, Help us, \_ ho - san - na.



Bles-sed are you who bear the name, Bles-sed are all\_\_ who  
Bles-sed are you who bear the name, Bles-sed are all\_\_ who



bear the name of God.  
bear the name of God.

## THANKSGIVING AT THE TABLE

## LORD'S PRAYER

Our Father, who art in heaven,  
hallowed be thy name,  
thy kingdom come,  
thy will be done,  
on earth as it is in heaven.

Give us this day our daily bread;  
and forgive us our trespasses,  
as we forgive those  
who trespass against us;  
and lead us not into temptation,  
but deliver us from evil.

For thine is the kingdom,  
and the power, and the glory,  
forever and ever. Amen.

## COMMUNION

*All who are baptized are welcome to receive Holy Communion, regardless of church affiliation. Receive our Lord in the bread and wine of this meal. Juice and individually wrapped, gluten-free wafers are available from the server by request.*

## DISTRIBUTION HYMNS *The Angel Gabriel from Heaven Came*

ELW 265



1 The an - gel Ga - bri - el from heav - en came,  
2 "For know a bless - ed moth - er thou shalt be,  
3 Then gen - tle Mar - y meek - ly bowed her head;  
4 Of her, Em-man - u - el, the Christ, was born



with wings as drift - ed snow, with eyes as flame:  
all gen - er - a - tions laud and hon - or thee;  
"To me be as it pleas - eth God," she said.  
in Beth - le - hem all on a Christ - mas morn,



"All hail to thee, O low - ly maid - en Mar - y,  
thy son shall be Em - man - u - el, by seers fore - told,  
"My soul shall laud and mag - ni - fy God's ho - ly name."  
and Chris-tian folk through-out the world will ev - er say:



most high - ly fa - vored la - dy."  
 most high - ly fa - vored la - dy."      Glo - ri - a!  
 Most high - ly fa - vored la - dy,  
 "Most high - ly fa - vored la - dy."

**HYMN** *Come, Thou Long-Expected Jesus*



1 Come, thou long - ex - spect-ed Je - sus, born to set thy peo-ple free;  
 2 Born thy peo - ple to de - liv - er, born a child and yet a king,



from our fears and sins re - lease us; let us find our rest in thee.  
 born to reign in us for - ev - er, now thy gra-cious king-dom bring.



Is-rael's strength and con-so - la - tion, hope of all the earth thou art;  
 By thine own e - ter - nal Spir - it rule in all our hearts a - lone;



dear de - sire of ev - ery na - tion, joy of ev - ery long-ing heart.  
 by thine all - suf-fi - cient mer - it raise us to thy glo-rious throne.

**TABLE BLESSING**

**PRAYER AFTER COMMUNION**

Christ Jesus, ... to be forces for change in this world, as we find the YES within each of us,  
**Amen.**

## SENDING

### BLESSING

May God bless you with courage, ... and that you are loved beyond measure.

**Amen.**

### SENDING HYMN *Canticle of the Turning*

ELW 723



1 My soul cries out with a joy - ful shout that the  
2 Though I am small, my . . . God, my all, you . . .  
3 From the halls of pow'r to the for - tress tow'r, not a  
4 Though the na - tions rage from . . age to age, we re -



God of my heart is great, and my spir - it sings of the  
work great . . things in me, and your mer - cy will last from the  
stone will be left on stone. Let the king be - ware for your  
mem - ber who holds us fast: God's mer - cy must de -



won - drous things that you bring to the ones who wait.  
depths of the past to the end of the age to be.  
jus - tice tears ev - 'ry ty - rant . . . from his throne.  
liv - er us from the con - quer - or's crush - ing grasp.



You fixed your sight on your ser - vant's plight, and my  
Your ver - y name puts the proud to shame, and to  
The hun - gry poor shall . . weep no more, for the  
This sav - ing word that our fore - bears heard is the



weak - ness you did not spurn, so from east to west shall my  
those who would for you yearn, you will show your might, put the  
food they can nev - er earn; there are ta - bles spread, ev - 'ry  
prom - ise which holds us bound, till the spear and rod can be



name be blest. Could the world be a - bout to turn?  
 strong to flight, for the world is a - bout to turn.  
 mouth be fed, for the world is a - bout to turn.  
 crushed by God, who is turn - ing the world a - round.



My heart shall sing of the day you bring. Let the fires of your jus - tice burn.



Wipe a - way all tears, for the dawn draws near, and the world is a - bout to turn.

## ANNOUNCEMENTS

### DISMISSAL

Go in peace. Keep awake.

**Thanks be to God.**

### POSTLUDE *Awake! Awake, and Greet the New Morn*

David Lasky

Copyright: *Awake! Awake! And Greet the New Morn*. Words and music: Marty Haugen © 1983 GIA Publications, Inc. *Canticle of the Turning*. Words and music: Rory Cooney © 1990 GIA Publications. *O Holy One*. Words and music: Richard Bruxvoort-Colligan © 2004 Worldmaking.net. Reprinted with permission under OneLicense.net #A-727601. All rights reserved. Liturgies from [sundaysandseasons.com](http://sundaysandseasons.com) License: SB127834 © 2025 Augsburg Fortress. All rights reserved.

## IN OUR PRAYERS

**For needs to be met:** For peace among nations, for our country, for those impacted by natural disasters, teachers, students, and parents, first responders, for all who struggle with uncertainty, caregivers, Hope Center, Bishop Curry, Sarah E, Anthony Y, James, April, Jose G, David M, Debby B, Isabella, Steve, Karen R, Judy W, Pat H, Harold B, Joan B, Pam G, Donna L, Sai R, Baby W, Pam G, Joan B, Brad S, Kenzie D, John K, Rusty B, Tim M, Sway S, Dakota, Ian L, Dale R, Sally, Trina F, Matt F, Paul M, Linda M, Chris R, Karen R, Shari H, Joyce, Shane R, Kathi, Mike M, Jan C, Annette E, Dan D, Kayla, Kevin, Dawn TW, Mary M, Dave, Jamie F, Shelby H, Alexis M, Kim GM, Kristen, Pat H, John F, Jan N, Annette W, Anna and Don F, Bunnie Dave M, Chris B, Katie L, Chuck, Andy S, Kathy J, Michael B, Bob, Kathy, Barb C, Carey, Dave, Betty, Lisa S, Isabella, Connor W, Liz S, Terri I, Judy, Janet J, Mark, Lisa E, Dave S and Vi E.

**For our partner churches in the Meru Diocese in Tanzania:** For the challenges they face. For God's continued blessings on our partnership

**For those serving in the military:** Gary Bjerke, Owen Hager, Jim Kieso Jr, Daniel Krueger, and Dmitriy Lando.

## NOTES FOR WORSHIP

- Need to enter/leave the sanctuary while the service is underway? Please find times that are least distracting to others to do so. Appropriate times could be during a hymn, the peace, or the offering. Please try to avoid movement during divine moments of sacred action (when God has promised to be among us in special ways): in the reading/preaching of Scripture and in the Sacraments of Baptism and Holy Communion. And remember, there is a lot of grace for families and small children – their voices, wiggles, unexpected movements are part of the joy of living in community together.
- Our 8:15 a.m. services are livestreamed to the web via Facebook and our website, where they are archived for later viewing. Leaders and active assistants/participants in the service appear in the livestream. It is also possible that you and/or your children may be seen in our livestream.
- Please wear a nametag, especially to welcome visitors. It's another way we can be welcoming and help us to say hello to each other!

## ANNOUNCEMENTS

### **Friendship Pads**

Please be sure to sign in on the friendship pads located in each pew.

### **Ambo Flowers**

This weekend's flowers are given to the Glory of God.

### **Hospitality Thank You**

December Mt. Meru Coffee Hour is sponsored by the Art and Marilyn Olson in honor of the Mr. Meru Coffee Customers.

### **50+ Anniversary**

We give thanks for John and Sharon Spivek celebrating their 66th wedding anniversary on December 17! We also give thanks for Jack and Janis Andersen celebrating their 61st wedding anniversary on December 19!

## **Sunday School Thank You**

A very special THANK YOU to all who helped bring our 2025 Christmas Pageant to life! Our Sunday School teachers: Renee Carstensen, Nancy Farrell, Shelly Outlaw, and Linda Roberts

Narrator: Kayla Warnes

Elizabeth and Zechariah: Lois & Jerry Haffner

Youth Helper: Livy Houle

Parents - for your encouragement and bringing your children to Sunday School and rehearsals

And last but certainly not least - all our talented and enthusiastic kids who brought the Christmas story to life!

## **Key Worship Dates and Times Coming Up**

As we head into the holiday season, we remind you to watch the worship calendar. The following are important dates and times to be aware of. There are a couple of dates coming up when our weekend schedule will be different than normal.

- Christmas Eve: 3:00 p.m., 5:30 p.m. and 10:30 p.m.
- Christmas Day: 9:15 a.m.
- Saturday, December 27: No Worship at 5:00 p.m.
- Sunday, December 28: One service at 9:15 a.m.
- Pastor Hooper's Installation Service: Sunday, January 18, 9:15 a.m.

## **Installation Service Scheduled**

Bishop Paul Erickson of the Greater Milwaukee Synod of the ELCA will install Pastor Maren Hooper as Associate Pastor of St. Luke's, Sunday, January 18. To celebrate, the congregation will hold one service that weekend: Sunday, January 18 at 9:15 a.m. There will be no Saturday night service that weekend. A meal and time of hospitality will follow.

## **2025 Tax and Giving Information**

Thank you for your contributions to St. Luke's. Your gifts to God fund a variety of ministries that change lives. According to IRS regulations, all contributions for the 2025 tax year must be in the church office by 12/31 (or mailed and postmarked by 12/31) to qualify as deductions for the 2025 tax year. Contributions for 2026 should be turned in starting in January. Please update us with all your current information so that your giving and tax statements are sent to the correct address.

## **Christmas Meal for Homebound and Needy**

Most of us are fortunate to have family and friends to share the holidays with. But there are many individuals in our area who are either homebound or alone or just having a hard time making ends meet. On Christmas Day, there will be a delivery of a FREE Christmas meal to anyone who may be in this situation. The meals are prepared at St. William's Church and are available to be delivered or picked up between 11:00 a.m. and 2:00 p.m. If you or someone you know is in this situation, please contact Marcia Slowinski (262) 798-1520, to arrange for a meal. Requests will be accepted through Friday, December 12.

## **Music & Fine Arts at St. Luke's presents their December concerts**

Please join us for these fantastic concerts in December as we celebrate this holiday season.

- Friday, December 19, at 7:30 p.m., Waukesha Choral Union presents their holiday concert called *Choose Something Like a Star*. Tickets are available at the door.
- Saturday, December 20, at 2:00 p.m. Cream City Brass presents a holiday concert. A freewill offering will be collected.

## **Calling All Youth in 6-12th Grades**

The Greater Milwaukee Synod Youth Task Force is organizing a trip to the **American Black Holocaust Museum** ([abhmuseum.org](http://abhmuseum.org)) for synod youth and youth leaders over Martin Luther King, Jr. Weekend. At **no cost** to you! **Join other youth from around the synod on Saturday, January 17**, for a guided tour and group debrief of the American Black Holocaust Museum, pizza to follow. Space is limited due to the capacity restrictions of the museum. **Please RSVP to Pastor Maren by Sunday, December 14**, [pastormaren@stlukeslutheran.org](mailto:pastormaren@stlukeslutheran.org). We will leave from church at 12:15 p.m., returning around 4:30 p.m. If you have any questions, please contact Pastor Maren.

## **Assisting Minister Training**

Assisting ministers play a beautiful role in worship. They remind us that every baptized person shares in the priesthood of all believers. When you serve alongside our clergy, you help show that worship is something we all do together as the body of Christ. We'd love for you to be part of this ministry! Training Details: Date: Monday, December 15, Time: 5:30 p.m. Who: Current assisting ministers and anyone interested in joining. If you already serve and can't make it, please email PJ. If you're curious about serving, this is the perfect time to learn and get started. Come and see how you can make a meaningful difference in worship!

## Help Hadfield Children

The Children at Hadfield need winter gear. There is a posterboard in the Welcome Center that has tags for the different sizes and items that are needed. Please take a tag and return the item in the Hadfield box in the Welcome Center. Here are the items that are needed.

### Boots

Girls size 3,5/4  
Boys 9/10(adult)  
Girls size 13  
Girls size 3  
Boys size 12  
Boys size 5  
Girls size 1  
Boys size 3 (x3)

### Snow Pants

Both Genders 8/10  
Both Genders 14/16

### Snow Gloves

Both Genders all sizes

### Sweatpants

Boys 4/5 & 8/10 preferably with ties

### Leggings

Girls 4/5 & 8/10

## Good Samaritan Fund Matching Fund Challenge

Did you know that St. Luke's has a Good Samaritan Fund? This fund is used at the discretion of the pastors and provides emergency assistance to individuals and families in need. In these challenging times, we have seen a steady uptick in requests for help. A generous member has indicated they will match donations made to this fund, up to \$1000. Special gifts towards this matching fund challenge will be accepted now through December 31st. When donating, please indicate on your check and/or envelope memo line "Good Samaritan Matching Fund."

## Tree of Remembrance

The Tree of Remembrance is an important tradition at St. Luke's and serves as a memorial to those in our lives that have died. It is a reminder that although Christmas is a celebratory time of the year, there are some for whom this season may include a sense of loss, grief, or sadness. The Tree of Remembrance is located in the Welcome Area and pays tribute to the memory of those we miss at this time of the year. You are invited to hang a cross ornament and share the name of the individual(s) you remember with fondness.

## Theology Uncorked

Theology Uncorked will not be meeting in January. Our next meeting will be Tuesday, February 7, at 6:00 p.m. at Cantarito's 408 E. Main St., Waukesha. Please come be part of this special group that gathers for uplifting spiritual conversation and good fellowship. This is a "come-as-you-can" group; no commitment required. Please join members of St. Luke's and be part of the lively atmosphere. Consider bringing a neighbor or friend!

## This Week at St Luke's

### Sunday, December 14, 2025

7:30 p.m. DT & YG  
 Christmas Cookie Sale  
 8:15 & 10:30 a.m. Worship  
 9:20 a.m. Sunday School  
 9:30 a.m. Mt. Meru Coffee  
 9:30 a.m. Men's Chorus Rehearsal  
 6:00 p.m. Men's A.A.

### Monday, December 15, 2025

8:00 a.m. Amigos  
 5:30 p.m. Assistant Minister Training  
 6:30 p.m. Al-Anon

### Tuesday, December 16, 2025

8:30 a.m. Needle and Thimble  
 5:30 p.m. Finance Committee  
 6:30 p.m. Church Council

### Wednesday, December 17, 2025

1:00 p.m. Search Bible Study  
 6:00 p.m. Godsbells

6:00 p.m. Discipleship Training

7:00 p.m. N.A.  
 7:15 p.m. Voices of Faith

### Thursday, December 18, 2025

4:30 p.m. Joyful Noise  
 5:00 p.m. Community Meal  
 7:00 p.m. The Broad Highway A.A.

### Friday, December 19, 2025

7:30 p.m. M&FAS Waukesha  
 Choral Union

### Saturday, December 20, 2025

2:00 p.m. M&FAS Cream City Brass  
 5:00 p.m. Worship

### Sunday, December 21, 2025

8:15 & 10:30 a.m. Worship  
 9:20 a.m. Sunday School  
 9:30 a.m. Mt. Meru Coffee  
 6:00 p.m. Men's A.A.

## Serving this Weekend:

	5:00	8:15	10:30
Presiding:	Pastor Jordan	Pastor Hooper	Pastor Hooper
Preaching:	Pastor Jordan	Pastor Jordan	Pastor Jordan
Music:	Michael Schaner	Michael Schaner	Michael Schaner
Cantor:	Jill Larson		
Assisting Minister:	Steve Wiley	Chris Jackson	Dan Jorvig
Lector:	Jean Binner	June Kieckhaefer	Sunday School Program
Bread Baker:	John Christiansen	John Christiansen	John Christiansen
Acolyte:		Brooklyn Harris	Kylie Smith
Communion Asst:	Mark Bjerke	Ginny Dietzler	Jim Kieso
Altar Care:	Susan Klabunde	Carolynn Fish	Sandy Hendrickson
		Marilyn Christiansen	Sharon Spivek
			Sharon Wood
Ushers:	Kathy Fontaine	Wendy Bacon	Debbie Lathrop
		Jay & Kathy Fontaine	Theo & Amy Lopez
		Trudy Staffeldt	Finley & Presley Lopez
			Jim Kieso
Worship Tech:		Eli Larson	