



# Twenty-Second Sunday after Pentecost

Sunday, November 9, 2025, 10:30 a.m.

St. Luke's Lutheran Church, Waukesha, WI

[www.stlukeslutheran.org](http://www.stlukeslutheran.org) [office@stlukeslutheran.org](mailto:office@stlukeslutheran.org) (262) 542-2545

**Helping people make life-changing connections with God  
through Jesus Christ.**

## Twenty-Second Sunday after Pentecost

Sunday, November 9, 2025, 10:30 a.m.

### Notes for Worship

- Hymnals: ELW: cranberry ACS purple.
- Individually wrapped gluten-free communion wafers are available upon request.
- We invite children of all ages to be in worship with us. Children are welcome to use the Pray-Ground in front of the church on the piano side as a comfortable space to experience worship. If you feel your child(ren) are being too disruptive, you are welcome to move into the Chapel.

### GATHERING

PRELUDE *Soliloquy*

David Conte

### CONFESSION AND FORGIVENESS

In the name of the Father, and of the ✠ Son, and of the Holy Spirit.

**Amen**

God of all mercy and consolation, come to the help of your people... our Savior and Lord.

**Amen.**

Let us confess our sin in the presence of God and of one another.

*Silence is kept for reflection.*

Most Merciful God,

**we confess that we are captive to sin and cannot free ourselves.**

**We have sinned against you in thought, word, and deed,**

**by what we have done and by what we have left undone.**

**We have not loved you with our whole heart;**

**we have not loved our neighbors as ourselves.**

**For the sake of your Son, Jesus Christ, have mercy on us.**

**Forgive us, renew us, and lead us, so that we may delight in your will  
and walk in your ways, to the glory of your holy name.**

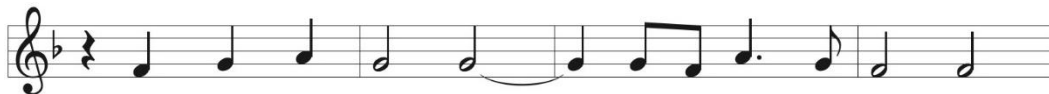
**Amen.**

# GATHERING HYMN *When We Are Living*

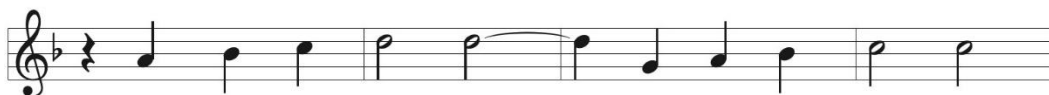
ELW 639



1 When we are liv - ing, it is in Christ Je - sus,  
2 'Mid times of sor - row and in times of pain, . . . .  
3 A - cross this wide world, we shall al - ways find . . . .



and when we're dy - ing, it is in the Lord. . . .  
when sens - ing beau - ty or in love's em - brace, . . .  
those who are cry - ing with no peace of mind; . . .



Both in our liv - ing and in our dy - ing,  
wheth - er we suf - fer, or sing re - joic - ing,  
and when we help them, or when we feed them,



we be - long to God, we be - long to God.  
we be - long to God, we be - long to God.  
we be - long to God, we be - long to God.

## APOSTOLIC GREETING

The grace of our Lord Jesus Christ, ... and the communion of the Holy Spirit be with all!  
**And also with you.**

KYRIE

ELW 157

**Refrain**

*Assistant:* *Congregation:*

In peace, in peace, let us pray to the Lord, have mer-cy,

*to Verses*

Christ, have mer - cy, Lord, have mer - cy.

*Assistant:* For the Reign of God, and for peace throughout the world, for the unity of all . . . (to Refrain)

*Assistant:* For your people here, who have come to give you praise, for the strength to live your Word . . . (to Refrain)

*Assistant:*

Help, save and de - fend us, O

*Congregation:*

God. A - men.

**CANTICLE OF PRAISE** *Now the Feast*

ELW 167

*Refrain*

Now the feast and cel - e - bra-tion, all of cre - a - tion

sings for joy to the God of life and love and free-dom;

praise and glo - ry for - ev - er - more!

1 Now is the feast of the Lamb once slain, whose blood has

freed and u - nit-ed us to be one great peo-ple of God. *Refrain*

2 Pow - er and rich-es, wis-dom and might, all hon - or and

glo - ry to Christ for - ev - er. *Refrain*

3 For God has come to dwell with us, to make us peo-ple of

God; to make all things new. *Refrain*

### PRAYER OF THE DAY

O God, our eternal redeemer, ... resurrection, through Jesus Christ, our Savior and Lord.  
**Amen.**

## WORD

### FIRST READING

Job 19:23-27a

- <sup>23</sup> “O that my words were written down!  
O that they were inscribed in a book!  
<sup>24</sup> O that with an iron pen and with lead  
they were engraved on a rock forever!  
<sup>25</sup> For I know that my vindicator lives  
and that in the end he will stand upon the earth;  
<sup>26</sup> and after my skin has been destroyed,  
then in my flesh I shall see God,  
<sup>27a</sup> whom I shall see on my side,  
and my eyes shall behold, and not another.”

The word of the Lord.

**Thanks be to God.**

### PSALM

Psalm 17:1-9

*Read responsively by verse*

- <sup>1</sup> Hear a just cause, O Lord; give heed to my cry;  
listen to my prayer, which does not come from lying lips.  
<sup>2</sup> **Let my vindication come forth from your presence;  
let your eyes be fixed on justice.**  
<sup>3</sup> Examine my heart, visit me by night,  
melt me down; you will find no impurity in me.  
<sup>4</sup> **I have not regarded what others do;  
at the word of your lips I have avoided the ways of the violent.**  
<sup>5</sup> My footsteps hold fast to your well-worn path;  
and my feet do not slip.  
<sup>6</sup> **I call upon you, O God, for you will answer me;  
incline your ear to me and hear my words.**  
<sup>7</sup> Show me your marvelous lovingkindness,  
O Savior of those who take refuge at your right hand from those who  
rise against them.  
<sup>8</sup> **Keep me as the apple of your eye;  
hide me under the shadow of your wings,**  
<sup>9</sup> from the wicked who assault me,  
from my deadly enemies who surround me.

## SECOND READING

2 Thessalonians 2:1-5, 13-17

<sup>1</sup>As to the coming of our Lord Jesus Christ and our being gathered together to him, we beg you, brothers and sisters, <sup>2</sup>not to be quickly shaken in mind or alarmed, either by spirit or by word or by letter, as though from us, to the effect that the day of the Lord is already here. <sup>3</sup>Let no one deceive you in any way, for that day will not come unless the rebellion comes first and the lawless one is revealed, the one destined for destruction. <sup>4</sup>He opposes and exalts himself above every so-called god or object of worship, so that he takes his seat in the temple of God, declaring himself to be God. <sup>5</sup>Do you not remember that I told you these things when I was still with you?

<sup>13</sup>But we must always give thanks to God for you, brothers and sisters beloved by the Lord, because God chose you as the first fruits for salvation through sanctification by the Spirit and through belief in the truth. <sup>14</sup>For this purpose he called you through our gospel, so that you may obtain the glory of our Lord Jesus Christ. <sup>15</sup>So then, brothers and sisters, stand firm and hold fast to the traditions that you were taught by us, either by word of mouth or by our letter.

<sup>16</sup>Now may our Lord Jesus Christ himself and God our Father, who loved us and through grace gave us eternal comfort and good hope, <sup>17</sup>comfort your hearts and strengthen them in every good work and word.

The word of the Lord.

**Thanks be to God.**

## CHILDREN'S LESSON

### THIRD READING

1 Peter 4:1-2;8-11

Since, therefore, Christ suffered in the flesh, arm yourselves also with the same intention (for whoever has suffered in the flesh has finished with sin), <sup>2</sup>so as to live for the rest of your time in the flesh no longer by human desires but by the will of God. <sup>8</sup>Above all, maintain constant love for one another, for love covers a multitude of sins. <sup>9</sup>Be hospitable to one another without complaining. <sup>10</sup>Like good stewards of the manifold grace of God, serve one another with whatever gift each of you has received. <sup>11</sup>Whoever speaks must do so as one speaking the very words of God; whoever serves must do so with the strength that God supplies, so that God may be glorified in all things through Jesus Christ. To him belong the glory and the power forever and ever. Amen.

The word of the Lord.

**Thanks be to God.**

## SERMON

Pastor Hooper



1 Lord, you give the great com - mis - sion: "Heal the sick and  
 2 Lord, you call us to your ser - vice: "In my name bap -  
 3 Lord, you make the com - mon ho - ly: "This my bod - y,  
 4 Lord, you show us love's true mea - sure: "Fa - ther, what they  
 5 Lord, you bless with words as - sur - ing: "I am with you



preach the word." Lest the church ne - glect its mis - sion,  
 tize and teach." That the world may trust your prom - ise,  
 this my blood." Let us all, for earth's true glo - ry,  
 do, for - give." Yet we hoard as pri - vate trea - sure  
 to the end." Faith and hope and love re - stor - ing,



and the gos - pel go un - heard, help us wit - ness  
 life a - bun - dant meant for each, give us all new  
 dai - ly lift life heav - en - ward, ask - ing that the  
 all that you so free - ly give. May your care and  
 may we serve as you in - tend and, a - mid the



to your pur - pose with re - newed in - teg - ri - ty:  
 fer - vor, draw us clos - er in com - mu - ni - ty:  
 world a - round us share your chil - dren's lib - er - ty:  
 mer - cy lead us to a just so - ci - e - ty:  
 cares that claim us, hold in mind e - ter - ni - ty:

*Refrain*



With the Spir - it's gifts em - pow'r us for the work of min - is - try.

## APOSTLES' CREED

I believe in God, the Father almighty,  
creator of heaven and earth.

I believe in Jesus Christ, God's only Son, our Lord,  
who was conceived by the Holy Spirit,  
born of the Virgin Mary,  
suffered under Pontius Pilate,  
was crucified, died, and was buried;  
he descended to the dead.  
On the third day he rose again;  
he ascended into heaven,  
he is seated at the right hand of the Father,  
and he will come to judge the living and the dead.

I believe in the Holy Spirit,  
the holy catholic Church,  
the communion of saints,  
the forgiveness of sins,  
the resurrection of the body,  
and the life everlasting. Amen

## PRAYERS OF INTERCESSION *Hear Our Prayer*

ELW 178



Hear our prayer, hear our prayer, Lord, make us whole:



peace to all peo - ple, hope for each soul.



God of grace, in this place, hear now our prayer.

## PEACE

The peace of Christ be with you always!  
**And also with you!**

## MEAL

OFFERING *Tranquilly*

C. Hubert H. Parry

**NOVEMBER MISSION: ELCA World Hunger and Waukesha Food Pantry:** During the month of Thanksgiving, we are motivated to share a portion of the gifts we have received from God with others, so they too receive the gift of food. The ELCA World Hunger program is highly regarded in its effectiveness of its ministry as is the Waukesha Food Pantry in its ministry to Waukesha residents.

### Two Options to Use Your Phone to Give



1. Point your QR reader at the left QR graphic where you can login and track your giving. Or visit [stlukeslutheran.org](http://stlukeslutheran.org) and click the Online Giving tab on the right side of the page.
2. Point your QR reader at the right QR graphic to make an **online one-time** gift. Or visit [omella.com/o/izfds](http://omella.com/o/izfds).



### OFFERING PRAYER

Lord of the harvest, ... all who are suffering and in need, through Jesus Christ our Lord.  
**Amen.**

### DIALOGUE

The Lord be with you.

**And also with you.**

Lift up your hearts.

**We lift them to the Lord.**

Let us give thanks to the Lord our God.

**It is right to give our thanks and praise.**

### THANKSGIVING AT THE TABLE

#### LORD'S PRAYER

Our Father, who art in heaven,

hallowed be thy name,

thy kingdom come,

thy will be done,

on earth as it is in heaven.

Give us this day our daily bread;  
 and forgive us our trespasses,  
     as we forgive those  
         who trespass against us;  
 and lead us not into temptation,  
     but deliver us from evil.  
 For thine is the kingdom,  
     and the power, and the glory,  
     forever and ever. Amen.

**COMMUNION**

*All who are baptized are welcome to receive Holy Communion, regardless of church affiliation. Receive our Lord in the bread and wine of this meal. Juice and individually wrapped, gluten-free wafers are available from the server by request.*

**LAMB OF GOD**



1. Lamb of God, you take a - way the sin of the world;
2. Lamb of God, you break the chains of ha - tred and fear;
3. Lamb of God, you are the way of jus - tice and peace:
4. Lamb of God, you are the way of mer - cy and love:



have mer-cy on us, mer-cy on us, mer-cy on us.



Lamb of God, you take a-way the sin of the world:



grant us peace, grant us peace, grant us peace.



- 1 Bless-ed as-sur-ance, Je-sus is mine! Oh, what a fore-taste of glo-ry di-vine!
- 2 Per-fect sub-mis-sion, per-fect de-light, vi-sions of rap-ture now burst on my sight;
- 3 Per-fect sub-mis-sion, all is at rest; I in my Sav-ior am hap-py and blest,



Heir of sal-va-tion, pur-chase of God, born of his Spir-it, washed in his blood.  
an - gels de-scend-ing bring from a-bove ech - oes of mer-cy, whis-pers of love.  
watch-ing and wait-ing, look - ing a -bove, filled with his good-ness, lost in his love.

*Refrain*



This is my sto - ry, this is my song, prais-ing my Sav - ior all the day long:



this is my sto - ry, this is my song, prais-ing my Sav - ior all the day long.

HYMN *Jerusalem, My Happy Home*



- 1 Je - ru - sa - lem, my hap - py home, when shall I come to thee?
- 2 O hap - py har - bor of the saints, O sweet and pleas-ant soil!
- 3 Thy gar-dens and thy gal-lant walks con - tin - ual-ly are green;
- 4 There trees for-ev - er - more bear fruit and ev - er - more do spring;
- 5 Je - ru - sa - lem, Je - ru - sa - lem, God grant that I may see



When shall my sor - rows have an end? Thy joys when shall I see?  
In thee no sor - row may be found, no grief, no care, no toil.  
there grow such sweet and pleas-ant flow'rs as no-where else are seen.  
there ev - er - more the an - gels sit and ev - er - more do sing.  
thine end - less joy, and of the same par-tak - er ev - er be!

## TABLE BLESSING

### PRAYER AFTER COMMUNION

God of field and flower, ... and thirst, and embolden us to love and serve in Christ's name.

**Amen.**

## SENDING

### BLESSING

The Lord bless you and keep you.

The Lord's face shine on you with grace and mercy.

The Lord look upon you with favor and ☩ give you peace.

**Amen.**

### SENDING HYMN *Guide Me Ever, Great Redeemer*

ELW 618



1 Guide me ev - er, great Re - deem-er, pil - grim through this  
2 O - pen now the crys - tal foun-tain where the heal - ing  
3 When I tread the verge of Jor - dan, bid my anx - ious



bar - ren land. I am weak, but you are might - y; hold me  
wa - ters flow; let the fire and cloud - y pil - lar lead me  
fears sub - side; death of death and hell's de - struc - tion, land me



with your pow'r - ful hand. Bread of heav - en, bread of heav - en,  
all my jour - ney through. Strong de - liv - 'rer, strong de - liv - 'rer,  
safe on Ca - naan's side. Songs and prais - es, songs and prais - es



feed me now and ev - er - more, feed me now and ev - er - more.  
shield me with your might-y arm, shield me with your might-y arm.  
I will raise for - ev - er - more, I will raise for - ev - er - more.

## ANNOUNCEMENTS

### DISMISSAL

Go in peace. Share the harvest.

**Thanks be to God.**

### POSTLUDE *Choral Song*

Samuel S. Wesley

Copyright: *Jerusalem, My Happy Home/LAND OF REST – harmonization*. Music: Evangelical Lutheran Worship © 2006 Augsburg Fortress Publishers. *Lord, You Give the Great Commission – ABBOT'S LEIGH*. Words and music: Jeffery Rowthorn, Cyril V. Taylor © 1942, 1970, 1978 Hope Publishing Company. *Now the Feast and Celebration*. Words and music: Marty Haugen © 1990 GIA Publications, Inc. *Pues Si Vivimos/When We Are Living – English stanzas*. Words: Elise Elsinger © 1989 United Methodist Publishing House. *Soliloquy*. Music: David Conte © 1997 ECS Publishing. Reprinted with permission under OneLicense.net #A-727601. All rights reserved.  
Liturgies from [sundaysandseasons.com](http://sundaysandseasons.com) License: SB127834 © 2025 Augsburg Fortress. All rights reserved.

## IN OUR PRAYERS

**For needs to be met:** For peace among nations, for our country, for those impacted by natural disasters, (especially the people of Jamaica,) for all impacted by flooding, teachers, students, and parents, first responders, for all who struggle with uncertainty, caregivers, Hope Center, Bishop Curry, Brad S, Kenzie D, John K, Rusty B, Tim M, Sway S, Dakota, Ian L, Dale R, Sally, Trina F, Matt F, Paul M, Linda M, Chris R, Karen R, Shari H, Joyce, Shane R, Kathi, Mike M, Jan C, Annette E, Dan D, Kayla, Kevin, Dawn TW, Mary M, Dave, Jamie F, Shelby H, Alexis M, Kim GM, Kristen, Pat H, John F, Jan N, Annette W, Anna and Don F, Martha O, Bradley, Melissa K, Melody B, Kris P, Tim M, Bunnie Dave M, Chris B, Katie L, Chuck, Andy S, Kathy J, Michael B, Bob, Kathy, Barb C, Carey, Dave, Betty, Darlene, Lisa S, Isabella, Connor W, Liz S, Terri I, Ben M, Steve S, Judy, Kathy DW, Debbie C, Janet J, Mark, Lisa E, Dave S, Sarah, Brian B, and Vi E.

**For our partner churches in the Meru Diocese in Tanzania:** For the challenges they face. For God's continued blessings on our partnership

**For those serving in the military:** Gary Bjerke, Owen Hager, Jim Kieso Jr, Daniel Krueger, and Dmitriy Lando.

## NOTES FOR WORSHIP

- Need to enter/leave the sanctuary while the service is underway? Please find times that are least distracting to others to do so. Appropriate times could be during a hymn, the peace, or the offering. Please try to avoid movement during divine moments of sacred action (when God has promised to be among us in special ways): in the reading/preaching of Scripture and in the Sacraments of Baptism and Holy Communion. And remember, there is a lot of grace for families and small children – their voices, wiggles, unexpected movements are part of the joy of living in community together.
- Our 8:15 a.m. services are livestreamed to the web via Facebook and our website, where they are archived for later viewing. Leaders and active assistants/participants in the service appear in the livestream. It is also possible that you and/or your children may be seen in our livestream.
- Please wear a nametag, especially to welcome visitors. It's another way we can be welcoming and help us to say hello to each other!

## ANNOUNCEMENTS

### Friendship Pads

Please be sure to sign in on the friendship pads located in each pew.

### Ambo Flowers

This weekend's flowers are given by Mr. Jim Kieso in honor of Veterans Day.

### Hospitality Thank You

November Mt. Meru Coffee Hour is sponsored by the Generosity Team.

### 50+ Anniversary

We give thanks for Thomas and Sandra Mitchell celebrating their 62nd wedding anniversary on November 9!

### Generosity Team Message – It's All Gift

Join our faith community in worship this weekend, November 8 and 9, as we begin our 2026 generosity appeal, *It's All Gift*. God's grace, love and mercy is great – and – a wonderful gift. Listen as stories of blessings and gratitude are shared. God's grace helps us grow in our faith, leads us to action and supports our willingness to be generous givers. St. Luke's faith community has impacted the daily lives of many. ***And God is able to provide you with every blessing in abundance, so that by always having enough of everything, you may share abundantly in every good work. (2 Corinthians 9:8)***

## **Wanted College Addresses**

It seems like school just started, but final exams are not too far away. The youth group will be sending care packages to our friends in college and trade schools later this fall. If you have a young adult in college or trade school this fall, please send their current address for this school year to Cari, [youth@stlukeslutheran.org](mailto:youth@stlukeslutheran.org), or drop off in the church office by November 9, even if you have turned it in previous years.

## **Come For Fellowship, Sarah Circle Bible Study**

Sarah Circle, a Bible Study group, meets the third Monday of every month. This month's meeting is Monday, November 17, at 1:00 p.m. at the home of Vonda Bickett, 363 Standingstone Dr. Waukesha 53189, (414) 416-0246. All women are welcome to come. For more information or questions, please call Vonda.

## **Music & Fine Arts at St. Luke's Presents Upcoming November Concerts**

Music & Fine Arts at St. Luke's is excited to start our program year with two fantastic concerts in November. On Friday, November 21, at 6:30 p.m. the Milwaukee Handbell Ensemble will present their concert titled *Spirit*. The Milwaukee Handbell Ensemble is a professional, auditioned handbell ensemble under the direction of Jana Larson, and their performance at St. Luke's will feature Michael Schaner on organ. A freewill offering will be collected. On Sunday, November 23, at 4:00 p.m. the Wisconsin Wind Orchestra will present their fall concert *How Suite It Is* at St. Luke's. The Wisconsin Wind Orchestra is one of the nation's premiere chamber wind ensembles. We are very fortunate to have them here at St. Luke's! A freewill offering will be collected. More information can be found on the Music & Fine Arts bulletin board and Facebook page.

## **Saturday Social**

The November Saturday Social is scheduled for November 22. The youth invite all to join us at the next Saturday Social after the 5:00 p.m., service. This month's social is an old-fashioned potluck. Bring your favorite dish to share. Drop your dish off before service then join us for dinner plus a little bit of socializing and laughter on a Saturday evening. RSVP at Sign-Up Central or contact Cari ([youth@stlukeslutheran.org](mailto:youth@stlukeslutheran.org) )

## **Elegant Farmer Fundraiser**

The youth will be taking pre-orders for Elegant Farmer Award-winning Pies and Signature Foods, before and after services starting October 25. The last day to pre-order is Sunday, November 9. Orders will be available for pick up at St. Luke's beginning Saturday, November 22, the weekend before Thanksgiving. Payment is due at the time of the order. Questions? Please contact Cari ([youth@stlukeslutheran.org](mailto:youth@stlukeslutheran.org)).

Pies: 8" Apple Pie or Caramel Apple Pie, Baked in a Paper Bag® \$26, 10" Pumpkin Pie \$23, 8" Door County Cherry Crisp \$26, Fruit Breads: Large 1.35 lb Pumpkin Apple Bread or Banana Bread \$23 each. Bonus Item: 3+ lb CiderBaked Mini Ham \$26.

## **SOPHIA Religious Leaders Caucus Educational Event: Current Issues in Immigration**

Join us on Wednesday, November 12, 2025, 8:30–10:30 a.m. on Zoom for an educational event exploring issues surrounding immigration today with Dr. Stephanie Mitchell, professor of humanities and history at Carthage College. All are welcome to this virtual learning event. Scan the QR code or visit [sophiawaukesha.org/events](https://sophiawaukesha.org/events) for more information or to register.



## **Assisting Minister Help Needed**

We are in need of more Assisting Ministers for all services. If you are interested in helping, or would like more information, contact the church office, (262) 542-2545.

## **Thanksgiving Eve Worship Service**

Join with one another and enjoy give thanks to God for all the gifts God gives us: home and family, food and clothing, daily work, and everything we need from day to day. Plus, he gives us even more: Jesus Christ, God's beloved Son. Through him, we are set free from sin, death, and evil. The Thanksgiving Service will be Wednesday, November 26, 7:00 p.m. Pie Fest will follow the service – so, stay and enjoy a slice or two!

## **Bring Your Nativity Set to Church**

Time to start looking for your nativity set! At worship services December 6 and December 7, we will again be blessing each of our nativities. We invite everyone to bring their sets to church beginning Wednesday, December 3. Tables will be arranged at the front of the sanctuary so you can display your set that weekend. Please start thinking about where you placed your nativity after last season. Plan to bring it to worship and have it blessed so that it might be a sign of Christ's presence in your home.

## **Kwik Trip Cards Fundraiser**

This is an on-going year-round fundraiser for the youth. If you frequent Kwik Trip on a regular basis, please consider purchasing gift cards through St. Luke's to use for your gas and grocery purchases. The youth will get a portion of your everyday purchases. In addition to the gift, gas and grocery cards, we also have 5-count car wash cards available. Cards are available for purchase either via order form, available on the Welcome Station or directly from the stock Sunday mornings. Additional denominations are available upon request, usually within 2 weeks of the order. Contact Cari ([youth@stlukeslutheran.org](mailto:youth@stlukeslutheran.org)) with any questions or to order cards. Christmas is around the corner. KwikTrip gift cards make a great gift and support youth activities. We will be placing the next special-order November 5, so that they will arrive before Thanksgiving then a second order on December 3 for mid-December arrival.

## **CLM Scrip Fundraiser**

We have some exciting news! Our St. Luke's Child Life Ministries Scrip Account through RaiseRight is active! What is Scrip? It's a place where you can purchase gift cards and CLM will get a portion of your purchase kicked back! Going shopping? Get a gift card to pay for your purchase and donate to CLM at the same time, it's that easy! You can order your gift card and have it instantly available to use, right from your phone. There are two easy ways to sign up, follow this link OR scan the QR code. Share with your friends and relatives by sending them a text or email! There's no cost or upcharge, just purchasing gift cards that helps CLM.

<https://www.raiseright.com/enroll?enrollCode=FD CD7A8962586>



## **Angel Tree**

St. Luke's is again sharing our love for Hadfield and other Waukesha community families that need a little extra at the holidays. This year, we will have a tree filled with angel ornaments of Christmas wishes. We encourage all of St. Luke's to choose one or more tags and fulfill the needs. It's a great opportunity to feel the joy of giving to others; something the people of St. Luke's do so well. All unwrapped gifts need to be returned to church by the weekend of December 6/7. Important: When you return your gift, PLEASE attach the angel tag to it. You are also welcome to send along wrapping paper or boxes. If you have any questions, please text or call Kathy Pederson, (414) 530-7986.

## **Join Us for Search Bible Study**

Join PJ for Search Bible Study on Wednesdays at 1:00 p.m. Grow in faith and engage in great conversations.

## **Worship Techs Needed**

St. Luke's Lutheran Church provides an excellent service by televising the weekly services for those who have difficulty attending in person. This is accomplished by the Worship Technology people who turn on the computer and point the cameras in the right direction. My name is John Christiansen, and I would like to appeal to everyone to consider volunteering to be a Worship Technology person. This is a very important position as many of our fellow members depend on the services being televised. Is the work difficult? No, and I will prove it to you, just email me, [jchristiansen46@gmail.com](mailto:jchristiansen46@gmail.com), or catch me after the 8:15 a.m. service. I invite you to join me in the loft and you can watch the behind-the-scenes video work in action. The Worship Technology person has the best seat in our church. Can you imagine sitting in the loft next to Michael as he makes the organ sing? I promise I will show you everything that I can about the video work. Too old is not an acceptable excuse. 2 Corinthians 9:7 "Each of you should give what you have decided in your heart to give, not reluctantly or under compulsion, for God loves a cheerful giver." Thanks for your consideration.

## **Online Giving**

To start giving electronically or make changes to your on-line giving, please log on to our website and click on “Online Giving” on the far right. You can also fill out the paper authorization form and return it to the church office. Paper authorization forms are available at the Welcome Center.

## **Communication is Important**

Communicating when, where, what, why, and how is important. If there is something you would like communicated in the weekly bulletin, weekly *Connections* email, or the monthly Epistle newsletter, it's as easy as writing the announcement and emailing it to [office@stlukeslutheran.org](mailto:office@stlukeslutheran.org) or stopping by the office with your article by the deadlines. The deadlines for the bulletin and *Connections* are 12:00 p.m. the Tuesday before the Thursday or the weekend you would want the information in *Connections* or bulletin. The deadline for the monthly Epistle newsletter is the 15<sup>th</sup> of the month unless the 15<sup>th</sup> falls on a weekend or holiday; then, the deadline is the Friday before. If you have any questions, please reach out either by email or call the church office at (262) 542-2545.

## **Prayer Team**

Scripture encourages us to bear one another's burdens. Lifting others up in prayer is a way to do that. The need for prayer and for people to pray grows daily! Please consider becoming a member of our Prayer Team. There are no meetings or phone calls to make. You will receive prayer requests via email and are asked to pray daily. No specific prayer, although suggestions are given in the email you receive. Simply ask God to guide you. Did you know you can pray any time and any place? How about while brushing your teeth or showering, during your kids' practices or games, while waiting for appointments? All that is asked is that you pray daily. Please consider joining this vital ministry. For information, contact Laurie Rohrwasser.

## **Are You Receiving Our Weekly *Connections* Email?**

Each week we send out an email called *Connections*. It includes announcements, links, information about worship schedules, community events, and so much more. If you are not receiving it, email the office ([office@stlukeslutheran.org](mailto:office@stlukeslutheran.org)) to be added to the email list.

## **Prayer Ministry**

How can our Prayer Team pray for you, a friend or loved one? We are ready to lift up prayers for you during the joys and trials of your life. If you or someone you know needs prayer for any reason, please contact Laurie Rohrwasser, [lrohrwasser@stlukeslutheran.org](mailto:lrohrwasser@stlukeslutheran.org). Perhaps you know of someone who could use a note of encouragement or well wishes, please let her know.

## This Week at St Luke's

### Sunday, November 9, 2025

Elegant Farmer Pre-Sale  
 8:15 a.m. & 10:30 a.m. Worship  
 9:15 a.m. Cinnamon Roll Sunday  
 9:20 a.m. Sunday School  
 9:30 a.m. Mt. Meru Coffee  
 9:30 a.m. Men's Chorus Rehearsals  
 12:00 p.m. Youth Group  
 6:00 p.m. Men's A.A.

### Monday, November 10, 2025

8:00 a.m. Amigos  
 1:00 p.m. Facilities Committee  
 6:30 p.m. Al-Anon

### Tuesday, November 11, 2025

8:30 a.m. Needle & Thimble  
 4:30 p.m. Worship Life Committee  
 7:00 p.m. W.C.U. Rehearsal

### Wednesday, November 12, 2025

1:00 p.m. Search Bible Study  
 6:00 p.m. CLM Board Meeting  
 6:00 p.m. Godsbells  
 6:00 p.m. Discipleship Training  
 7:00 p.m. N.A.  
 7:00 p.m. Square Dancers  
 7:15 p.m. Voices of Faith

### Thursday, November 13, 2025

4:30 p.m. Joyful Noise  
 5:00 p.m. Community Meal  
 6:00 p.m. Diverse Harvest Practice  
 7:00 p.m. The Broad Highway A.A.

### Saturday, November 15, 2025

5:00 p.m. Worship

### Sunday, November 16, 2025

8:15 a.m. Worship  
 9:20 a.m. Sunday School  
 6:00 p.m. Men's A.A.

## Serving this Weekend:

	5:00	8:15	10:30
Presiding:	Pastor Hooper	Pastor Jordan	Pastor Jordan
Preaching:	Pastor Hooper	Pastor Hooper	Pastor Hooper
Music:	Deborah Vogt	Michael Schaner	Michael Schaner
Assisting Minister:	Dan Jorvig	Steve Wiley	Chris Jackson
Lector:	Eileen Kron	Patti Walkowicz	Curt Steinquist
Bread Baker:	Diane Willgrubs	Diane Willgrubs	Diane Willgrubs
Acolyte:	Nora Persells	Colin Larson	Conner Miller
Communion Asst:	Kathy Fontaine	Dawn Thompson-Weber	Darius Outlaw
Altar Care:	Susan Klabunde	Carolynn Fish	Sandy Hendrickson
		Marilyn Christiansen	Sharon Spivek
			Sharon Wood
Ushers:	Susan Klabunde	Jay Fontaine	Debbie Lathrop
		Kathy Fontaine	Theo & Amy Lopez
		Wendy Bacon	Finley & Presley Lopez
		Trudy Staffeldt	Jim Kieso
Worship Tech:		John Christiansen	