



Reformation Sunday

Saturday, October 25, 2025, 5:00 p.m.

Sunday, October 26, 2025, 8:15 & 10:30 a.m.

St. Luke's Lutheran Church, Waukesha, WI

www.stlukeslutheran.org office@stlukeslutheran.org (262) 542-2545

**Helping people make life-changing connections with God
through Jesus Christ.**

Reformation Sunday

Saturday, October 25, 2025, 5:00 p.m.

Sunday, October 26, 2025, 8:15 & 10:30 a.m.

Notes for Worship

- Hymns: ELW: cranberry ACS purple.
- Individually wrapped gluten-free communion wafers are available upon request.
- We invite children of all ages to be in worship with us. Children are welcome to use the Pray-Ground in front of the church on the piano side as a comfortable space to experience worship. If you feel your child(ren) are being too disruptive, you are welcome to move into the Chapel.

GATHERING

PRELUDE Two settings of *Ein Feste Burg*

Helmut Walcha
David Cherwien

CONFESSION AND FORGIVENESS

In the name of the Father, and of the ✠ Son, and of the Holy Spirit.

Amen

God of all mercy and consolation, come to the help of your people... our Savior and Lord.

Amen.

Let us confess our sin in the presence of God and of one another.

Silence is kept for reflection.

Most Merciful God,

we confess that we are captive to sin and cannot free ourselves.

We have sinned against you in thought, word, and deed,

by what we have done and by what we have left undone.

We have not loved you with our whole heart;

we have not loved our neighbors as ourselves.

For the sake of your Son, Jesus Christ, have mercy on us.

**Forgive us, renew us, and lead us, so that we may delight in your will
and walk in your ways, to the glory of your holy name.**

Amen.

In the mercy of almighty God, ... of the Father, and of the † Son, and of the Holy Spirit.
Amen.

GATHERING HYMN *A Mighty Fortress Is Our God*

ELW 504

Please sit during the introduction of the gathering hymn.

st. 1-2 - all; st. 3 - choir & organ; st. 4 - all



1 A might - y for - tress is our God, a sword and shield vic -
2 No strength of ours can match his might! We would be lost, re -
3 Though hordes of dev - ils fill the land all threat - 'ning to de -
4 God's Word for - ev - er shall a - bide, no thanks to foes, who



to - rious; he breaks the cruel op - pres - sor's rod and
ject - ed. But now a cham - pion comes to fight, whom
your us, we trem - ble not, un - moved we stand; they
fear it; for God him - self fights by our side with



wins sal - va - tion glo - rious. The old sa - tan - ic foe
God him - self e - lect - ed. You ask who this may be?
can - not o - ver - pow'r us. Let this world's ty - rant rage;
weap - ons of the Spir - it. Were they to take our house,



has sworn to work us woe! With craft and dread - ful might
The Lord of hosts is he! Christ Je - sus, might - y Lord,
in bat - tle we'll en - gage! His might is doomed to fail;
goods, hon - or, child, or spouse, though life be wrenched a - way,



he arms him - self to fight. On earth he has no e - qual.
God's on - ly Son, a - dored. He holds the field vic - to - rious.
God's judg - ment must pre - vail! One lit - tle word sub - dues him.
they can - not win the day. The king - dom's ours for - ev - er!

APOSTOLIC GREETING

The grace of our Lord Jesus Christ, ... and the communion of the Holy Spirit be with all!
And also with you.

PRAYER OF THE DAY

Almighty God, gracious Lord, ... with you and the Holy Spirit, one God, now and forever.
Amen.

WORD

FIRST READING

Jeremiah 31:31-34

³¹ The days are surely coming, says the Lord, when I will make a new covenant with the house of Israel and the house of Judah. ³² It will not be like the covenant that I made with their ancestors when I took them by the hand to bring them out of the land of Egypt—a covenant that they broke, though I was their husband, says the Lord. ³³ But this is the covenant that I will make with the house of Israel after those days, says the Lord: I will put my law within them, and I will write it on their hearts, and I will be their God, and they shall be my people. ³⁴ No longer shall they teach one another or say to each other, “Know the Lord,” for they shall all know me, from the least of them to the greatest, says the Lord, for I will forgive their iniquity and remember their sin no more.

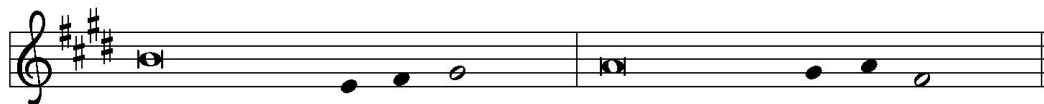
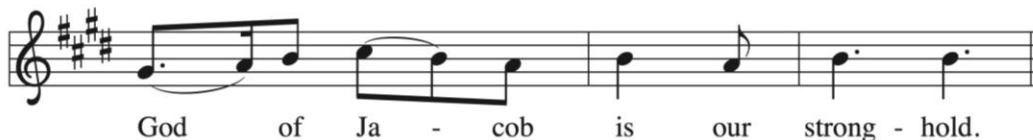
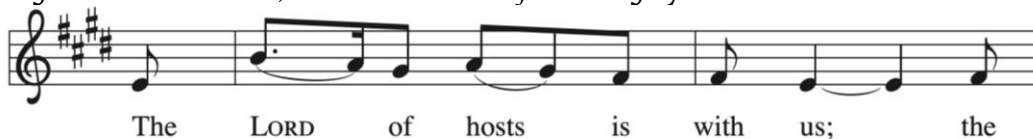
The word of the Lord.

Thanks be to God.

PSALM

Psalm 46

*The cantor will sing the refrain first, then all are invited to sing the refrain. Congregation sings the bolded verses, and the **R** is the refrain sung by all.*



¹ God is our ref- | uge and strength,
a very present | help in trouble.
² **Therefore we will not fear, though the | earth be moved,
and though the mountains shake in the depths | of the sea;**
³ though its waters | rage and foam,
and though the mountains tremble | with its tumult.
⁴ **There is a river whose streams make glad the cit- | y of God,
the holy habitation of | the Most High.**
⁵ God is in the midst of the city; it shall | not be shaken;
God shall help it at the | break of day.
⁶ **The nations rage, and the | kingdoms shake;
God speaks, and the earth | melts away. R**

⁷ The Lord of | hosts is with us;
the God of Jacob | is our stronghold.
⁸ **Come now, regard the works | of the Lord,
what desolations God has brought up- | on the earth;**
⁹ behold the one who makes war to cease in | all the world;
who breaks the bow, and shatters the spear, and burns the | shields with fire.
¹⁰ **“Be still, then, and know that | I am God;
I will be exalted among the nations; I will be exalted | in the earth.”**
¹¹ The Lord of | hosts is with us;
the God of Jacob | is our stronghold. **R**

SECOND READING

Romans 3:19-28

¹⁹ Now we know that, whatever the law says, it speaks to those who are under the law, so that every mouth may be silenced and the whole world may be held accountable to God. ²⁰ For no human will be justified before him by deeds prescribed by the law, for through the law comes the knowledge of sin.

²¹ But now, apart from the law, the righteousness of God has been disclosed and is attested by the Law and the Prophets, ²² the righteousness of God through the faith of Jesus Christ for all who believe. For there is no distinction, ²³ since all have sinned and fall short of the glory of God; ²⁴ they are now justified by his grace as a gift, through the redemption that is in Christ Jesus, ²⁵ whom God put forward as a sacrifice of atonement by his blood, effective through faith. He did this to demonstrate his righteousness, because in his divine forbearance he had passed over the sins previously committed; ²⁶ it was to demonstrate at the present time his own righteousness, so that he is righteous and he justifies the one who has the faith of Jesus.

²⁷ Then what becomes of boasting? It is excluded. Through what kind of law? That of works? No, rather through the law of faith. ²⁸ For we hold that a person is justified by faith apart from works prescribed by the law.

The word of the Lord.
Thanks be to God.

CHILDREN'S LESSON

GOSPEL ACCLAMATION *Alleluia*

ELW pg. 142



Al - le - lu - ia. Lord, to whom shall we go? You have the
words of e - ter - nal life. Al - le - lu - ia. Al - le - lu - ia.

GOSPEL

John 8:31-36

The holy gospel according to John.
Glory to you, O Lord.

³¹ Jesus said to the Jews who had believed in him, “If you continue in my word, you are truly my disciples, ³² and you will know the truth, and the truth will make you free.” ³³ They answered him, “We are descendants of Abraham and have never been slaves to anyone. What do you mean by saying, ‘You will be made free’?”

³⁴ Jesus answered them, “Very truly, I tell you, everyone who commits sin is a slave to sin. ³⁵ The slave does not have a permanent place in the household; the son has a place there forever. ³⁶ So if the Son makes you free, you will be free indeed.”

The gospel of the Lord.
Praise to you, O Christ.

SERMON

Pastor Hooper



1 The church's one foun - da - tion is Je - sus Christ, her Lord;
 2 E - lect from ev - 'ry na - tion, yet one o'er all the earth,
 3 Though with a scorn - ful won - der this world sees her op - pressed,
 4 Through toil and trib - u - la - tion and tu - mult of her war,
 5 Yet she on earth has u - nion with God, the Three in One,



she is his new cre - a - tion by wa - ter and the word.
 her char - ter of sal - va - tion one Lord, one faith, one birth:
 by schisms. . rent a - sund - er, by her - e - sies dis - tressed,
 she waits the con - sum - ma - tion of peace for - ev - er - more;
 and mys - tic sweet com - mu - nion with those whose rest is won.



From heav'n he came and sought her to be his ho - ly bride;
 one ho - ly name she bless - es, par - takes one ho - ly food,
 yet saints their watch are keep - ing; their cry goes up: "How long?"
 till with the vi - sion glo - rious her long - ing eyes are blest,
 Oh, bless - ed heav'n - ly cho - rus! Lord, save us by your grace,



with his own blood he bought her, and for her life he died.
 and to one hope she press - es with ev - 'ry grace en - dued.
 and soon the night of weep - ing shall be the morn of song.
 and the great church vic - to - rious shall be the church at rest.
 that we, like saints be - fore us, may see you face to face.

APOSTLES' CREED

**I believe in God, the Father almighty,
 creator of heaven and earth.**

**I believe in Jesus Christ, God's only Son, our Lord,
 who was conceived by the Holy Spirit,
 born of the Virgin Mary,
 suffered under Pontius Pilate,
 was crucified, died, and was buried;**

he descended to the dead.
On the third day he rose again;
he ascended into heaven,
he is seated at the right hand of the Father,
and he will come to judge the living and the dead.

I believe in the Holy Spirit,
the holy catholic Church,
the communion of saints,
the forgiveness of sins,
the resurrection of the body,
and the life everlasting. Amen

PRAYERS OF INTERCESSION

God of grace,
Receive our prayer.

PEACE

The peace of Christ be with you always!
And also with you!

MEAL

OFFERING

(5:00 p.m. & 10:30 a.m.) *Oceans Rise, the Coastlands Tremble*
God Alone Be Praised

setting, John Helgen
(based on ACS 1023)
Michael Schaner, piano
Anne Krentz Organ
Voices of Faith

(8:15 a.m.) *The Truth Will Make You Free*

OCTOBER MISSION: Tanzania Partnership: We give thanks for our Tanzania partnership and offer our gifts to continue to support five congregations that are arranged into two parishes, Kilimamoja and Mararoni. We support them through prayer, learning, relationship building and financial assistance.

Two Options to Use Your Phone to Give



1. Point your QR reader at the left QR graphic where you can login and track your giving. Or visit stlukeslutheran.org and click the Online Giving tab on the right side of the page.
2. Point your QR reader at the right QR graphic to make an **online one-time** gift. Or visit omella.com/o/izfds.



OFFERING PRAYER

Lord of the harvest, ... all who are suffering and in need, through Jesus Christ our Lord.
Amen.

DIALOGUE

The Lord be with you.
And also with you.

Lift up your hearts.
We lift them to the Lord.

Let us give thanks to the Lord our God.
It is right to give our thanks and praise.

THANKSGIVING AT THE TABLE

LORD'S PRAYER

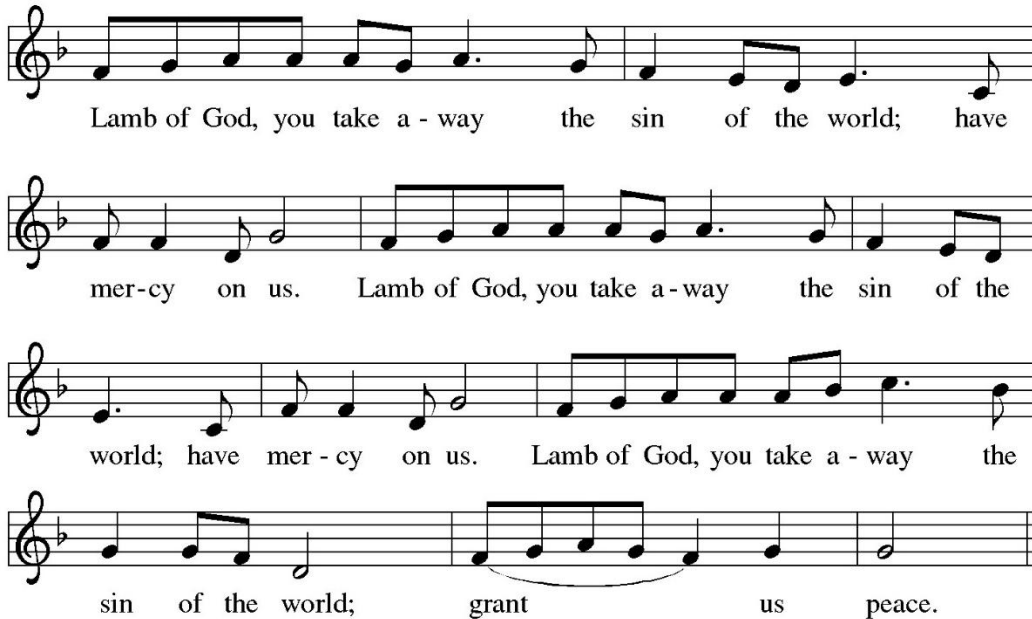
**Our Father, who art in heaven,
hallowed be thy name,
thy kingdom come,
thy will be done,
on earth as it is in heaven.
Give us this day our daily bread;
and forgive us our trespasses,
as we forgive those
who trespass against us;
and lead us not into temptation,
but deliver us from evil.
For thine is the kingdom,
and the power, and the glory,
forever and ever. Amen.**

COMMUNION

All who are baptized are welcome to receive Holy Communion, regardless of church affiliation. Receive our Lord in the bread and wine of this meal. Juice and individually wrapped, gluten-free wafers are available from the server by request.

LAMB OF GOD

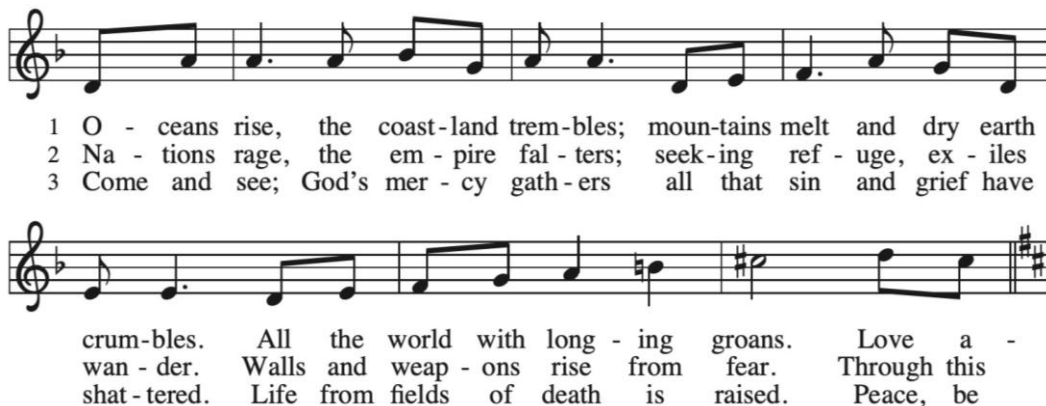
ELW p. 146



Lamb of God, you take a - way the sin of the world; have
mer-cy on us. Lamb of God, you take a-way the sin of the
world; have mer - cy on us. Lamb of God, you take a - way the
sin of the world; grant us peace.

DISTRIBUTION HYMNS *God Alone Be Praised*

ACS 1023



1 O - ceans rise, the coast-land trem-bles; moun-tains melt and dry earth
2 Na - tions rage, the em - pire fal - ters; seek-ing ref - uge, ex - iles
3 Come and see; God's mer - cy gath - ers all that sin and grief have
crum-bles. All the world with long - ing groans. Love a -
wan - der. Walls and weap - ons rise from fear. Through this
shat - tered. Life from fields of death is raised. Peace, be



bides, this gra - cious prom - ise is our help, our hope and
 wil - der - ness a riv - er flows to heal and bless us
 still; let pride - ful thun - der yield to songs of joy and



so - lace. God's strong word is sol - id ground.
 ev - er. God the cru - ci - fied dwells here.
 won - der. God and God a - lone be praised.

HYMN *The Church of Christ, in Every Age*

ELW 729



1 The church of Christ, in ev - 'ry age be - set by
 2 A - cross the world, a - cross the street, the vic - tims
 3 Then let the ser - vant church a - rise, a car - ing
 4 For he a - lone, whose blood was shed, can cure the
 5 We have no mis - sion but to serve in full o -



change, but Spir - it - led, must claim and test its
 of in - jus - tice cry for shel - ter and for
 church that longs to be a part - ner in Christ's
 fe - ver in our blood, and teach us how to
 be - dience to our Lord; to care for all, with -



her - i - tage and keep on ris - ing from the dead.
 bread to eat, and nev - er live be - fore they die.
 sac - ri - fice, and clothed in Christ's hu - man - i - ty.
 share our bread and feed the starv - ing mul - ti - tude.
 out re - serve, and spread his lib - er - at - ing word.

TABLE BLESSING

PRAYER AFTER COMMUNION

O God, ... and to share our possessions with all in need. We ask this in Jesus' name.

Amen.

SENDING

BLESSING

The God of righteousness, ... who sets the prisoners free, † bless you now and forever.

Amen.

SENDING HYMN *Thy Strong Word*

ELW 511

st. 1 - all; st. 2 - treble voices; st. 3 - all; st. 4 - low voices; st. 5-6 - all



1 Thy strong word did cleave the dark - ness; at thy
2 Lo, on those who dwelt in dark - ness, dark as
3 Thy strong Word be - speaks us righ - teous; bright with
4 From the cross thy wis - dom shin - ing break - eth



speak - ing it was done. For cre - at - ed light we
night and deep as death, broke the light of thy sal -
thine own ho - li - ness, glo - rious now, we press toward
forth in con - qu'ring might; from the cross for - ev - er



thank thee, while thine or - dered sea - sons run.
va - tion, breathed thine own life - breath - ing breath.
glo - ry, and our lives our hopes con - fess.
beam - eth all thy bright re - deem - ing light.



Al - le - lu - ia! Al - le - lu - ia! Praise to thee who light dost send!



Al - le - lu - ia! Al - le - lu - ia! Al - le - lu - ia with - out end!

5 Give us lips to sing thy glory,
tongues thy mercy to proclaim,
throats that shout the hope that fills us,
mouths to speak thy holy name.
Alleluia! Alleluia!
May the light which thou dost send
fill our songs with alleluias,
alleluias without end!

6 God the Father, light-creator,
to thee laud and honor be.
To thee, Light of Light begotten,
praise be sung eternally.
Holy Spirit, light-revealer,
glory, glory be to thee.
Mortals, angels, now and ever
praise the holy Trinity!

ANNOUNCEMENTS

DISMISSAL

Go in peace. Do not lose heart.

Thanks be to God.

POSTLUDE *A Mighty Fortress*

Charles Ore

St. Luke's brass ensemble: Dr. Andrew Dziuk, Steve Jensen, Ruth Gulotta, John Remmers

Copyright: *A Mighty Fortress*. Music: Charles W. Ore © 1990 Concordia Publishing House. *A Mighty Fortress – choral*. Music: Lutheran Book of Worship, Aaron David Miller © 2017 Augsburg Fortress Publishers. *Ein Feste Burg*. Music: Helmut Walcha © 1954 Alfred Sacred. *EIN FESTE BURG – organ*. Music: David Cherwien © 2007 Augsburg Fortress Publishers. *God Alone Be Praise/AD LUCEM*. Words and music: Susan Briehl, Zebulon M. Higben © 2016 Augsburg Fortress Publishers. *The Church of Christ, in Every Age*. Words and music: Fred Pratt Green, William Knapp © 1971 Hope Publishing Company. *The Church's One Foundation – choral*. Music: John Ferguson © 1999 Augsburg Fortress Publishers. *The Truth Will Make You Free*. Words and music: Anne Krentz Organ © 2017 Augsburg Fortress Publishers. *Thy Strong Word*. Words and music: Martin Franzmann, Carl Schalk © 1974, 2006 Concordia Publishing House. Streamed and reprinted with permission under OneLicense.net #A-727601. All rights reserved.

Liturgies from sundaysandseasons.com License: SB127834 © 2025 Augsburg Fortress. All rights reserved.

NOTES FOR WORSHIP

- Need to enter/leave the sanctuary while the service is underway? Please find times that are least distracting to others to do so. Appropriate times could be during a hymn, the peace, or the offering. Please try to avoid movement during divine moments of sacred action (when God has promised to be among us in special ways): in the reading/preaching of Scripture and in the Sacraments of Baptism and Holy Communion. And remember, there is a lot of grace for families and small children –

their voices, wiggles, unexpected movements are part of the joy of living in community together.

- Our 8:15 a.m. services are livestreamed to the web via Facebook and our website, where they are archived for later viewing. Leaders and active assistants/participants in the service appear in the livestream. It is also possible that you and/or your children may be seen in our livestream.
- Please wear a nametag, especially to welcome visitors. It's another way we can be welcoming and help us to say hello to each other!

IN OUR PRAYERS

Our Sympathy: For the family of Randy Kieck.

For needs to be met: For peace among nations, for our country, for those impacted by natural disasters, for all impacted by flooding, teachers, students, and parents, first responders, for all who struggle with uncertainty, caregivers, Hope Center, Bishop Curry, Ian L, Dale R, Sally, Trina F, Chris R, Karen R, Shari H, Joyce, Shane R, Mike M, Jan C, Kenzie D, Annette E, Dan D, Kayla, Kevin, Dawn TW, Mary M, Dave, Jamie F, Shelby H, Alexis M, Kim GM, Kristen, Pat H, John F, Jan N, Annette W, Kris P, Anna and Don F, Martha O, Bradley, Melissa K, Melody B, Tim M, Bunnie Dave M, Bob, Chris B, Katie L, Chuck, Andy S, Kathy J, Michael B, Kathy, Barb C, Carey, Dave, Betty, Darlene, Lisa S, Isabella, Connor W, Liz S, Terri I, Ben M, Steve S, Judy, Kathy DW, Debbie C, Janet J, Lisa E, Dave S, Sarah, Brian B, Mark and Vi E.

For our partner churches in the Meru Diocese in Tanzania: For the challenges they face. For God's continued blessings on our partnership

For those serving in the military: Gary Bjerke, Owen Hager, Jim Kieso Jr, Daniel Krueger, and Dmitriy Lando.

ANNOUNCEMENTS

Friendship Pads

Please be sure to sign in on the friendship pads located in each pew.

Ambo Flowers

This weekend's flowers are given by Ron and Kathy Pederson in honor of their 55th wedding anniversary on Friday, October 31.

Price Increase for Ambo Flowers

We just received notice, Thursday, October 2, that effective immediately the cost of the ambo flowers has increased from \$45 to \$50.

Hospitality Thank You

October Mt. Meru Coffee Hour is sponsored by the Hendrickson's, celebrating their 60-year wedding anniversary! They were married on October 22, 1965, by Rev. Glenn Cloninger.

50+ Anniversary

We give thanks for Ron and Kathy Pederson celebrating their 55th wedding anniversary on Friday, October 31!

Search Bible Study Has a New Time

Join PJ for Search Bible Study on Wednesdays at 1:00 p.m. Grow in faith and engage in great conversations.

Celebrating All Saints in Two Ways

All Saints Day is Saturday, November 1. We'll be observing this important date in two ways. First, Saturday, November 1, we'll hold a memorial service at 3:00 p.m. in the chapel for families of the congregation who have lost loved ones this year. Then, on Saturday and Sunday, November 1 and 2, we'll remember the saints in our weekend worship services. At those services, we'll celebrate those who have entered new life through Holy Baptism and death. We will read the names of the newly baptized and those who have passed. There will be opportunities for people to remember loved ones who have died and to light candles in their memory.

Congregational Meeting Candidate Vote

It is with joy and thanksgiving that the council received Pastor Maren Hooper's name as the Call Committee's candidate of choice to serve St. Luke's Lutheran Church in the role of full-time Associate Pastor. This name was forwarded by unanimous decision of the Call Committee and received by the council at a specially called meeting on Sunday, October 12. The council is forwarding Pastor Hooper's name for consideration by you and the entire congregation **at a specially called meeting of the congregation on Sunday, November 2, 2025, at 9:30 a.m. in the sanctuary** of this congregation. A two-thirds affirmative vote of voting members present at the meeting is required for the call to be issued. **A quorum of 40 voting members of the congregation is required for us to conduct business.** Let us give thanks to God for the work of the Mission Exploration Team and the Call Committee for the work they've done to further God's mission through us of helping people make life-changing connections with God through Jesus Christ.

Community Meal

Every Thursday at 5:00 p.m., we offer a community meal in combination with our Joyful Noise ensembles. We serve family-friendly meals that are open to all to attend!

Theology Uncorked

Please come be part of this special group that gathers for uplifting spiritual conversation and good fellowship. Our next meeting will be Tuesday, November 4, at 6:00 p.m. at Cantarito's 408 E. Main St., Waukesha. This is a "come-as-you-can" group; no commitment required. Please join members of St. Luke's and be part of the lively atmosphere. Consider bringing a neighbor or friend!

The Gathering

The Gathering is a group open to all. We will meet on the first Thursday of the month. Our next meeting will be Thursday, November 6, at 1:00 p.m. in the hospitality area. Come share your hobbies, interests and talents, or just listen. Get to know your fellow church members and even make new friends. If you would like to participate and this day and time doesn't work for you let us know by calling the church office at (262) 542-2545.

Wanted College Addresses

It seems like school just started, but final exams are not too far away. The youth group will be sending care packages to our friends in college and trade schools later this fall. If you have a young adult in college or trade school this fall, please send their current address for this school year to Cari, youth@stlukeslutheran.org, or drop off in the church office by November 9, even if you have turned it in previous years.

Elegant Farmer Fundraiser

The youth will be taking pre-orders for Elegant Farmer Award-winning Pies and Signature Foods, before and after services starting October 25. The last day to pre-order is Sunday, November 9. Orders will be available for pick up at St. Luke's beginning Saturday, November 22, the weekend before Thanksgiving. Payment is due at the time of the order. Questions? Please contact Cari (youth@stlukeslutheran.org).

Pies: 8" Apple Pie or Caramel Apple Pie, Baked in a Paper Bag® \$26, 10" Pumpkin Pie \$23, 8" Door County Cherry Crisp \$26, Fruit Breads: Large 1.35 lb Pumpkin Apple Bread or Banana Bread \$23 each. Bonus Item: 3+ lb CiderBaked Mini Ham \$26.

SOPHIA Religious Leaders Caucus Educational Event Current Issues in Immigration

Join us on Wednesday, November 12, 2025, 8:30–10:30 a.m. on Zoom for an educational event exploring issues surrounding immigration today with Dr. Stephanie Mitchell, professor of humanities and history at Carthage College. All are welcome to this virtual learning event. Scan the QR code or visit sophiawaukesha.org/events for more information or to register.



Saturday Social

The November Saturday Social is scheduled for November 22. The youth invite all to join us at the next Saturday Social after the 5:00 p.m., service. This month's social is an old-fashioned POTLUCK. Bring your favorite dish to share. Drop your dish off before service then join us for dinner plus a little bit of socializing and laughter on a Saturday evening. RSVP at Sign-Up Central or contact Cari (youth@stlukeslutheran.org)

Join the Hope Center at Their Annual Fundraiser

Please plan to attend on Thursday, November 20, at the Brookfield Conference Center, from 5:00 to 9:00 p.m., the Hope Center's biggest fundraiser of the year. This year's is extra special as they look back at all Ralph Zick has accomplished in his 20+ year tenure as Executive Director, and how it will continue helping the Hope Center make a lasting impact in our community moving forward. The night will include dinner, dessert and both a live and silent auction! There are many ways to help with this fundraiser other than attending. For information contact (262) 549-8726, or <https://hopecenterwi.org/events/>. If you would like to be part of the St. Luke's group attending, please contact the church office to arrange payment.

Thanksgiving Eve Worship Service

Join with one another and enjoy give thanks to God for all the gifts God gives us: home and family, food and clothing, daily work, and everything we need from day to day. Plus, he gives us even more: Jesus Christ, God's beloved Son. Through him, we are set free from sin, death, and evil. The Thanksgiving Service will be Wednesday, November 26, 7:00 p.m. Pie Fest will follow the service – so, stay and enjoy a slice or two!

Help For the Hope Center

There are many ways to help the Hope Center. Sorters are needed in the Clothing Shop, prep and serve breakfast and lunch, dates can vary. You can volunteer by contacting (262) 549-8726. Check out their website for their weekly donation request list at <https://hopecenterwi.org/donate-now/>. They are especially in need of hygiene products, body wash, shampoo, conditioner, lotion, toothbrushes and toothpaste. The Hope Center address is 101 W Broadway, Waukesha 53186.

Sunday School Survey



Attention Parents/Guardians of Sunday School students: Please use this QR code to take a quick (less than 2 minutes, I promise!) survey. Your feedback will be helpful as we plan and look toward the future of Sunday School programming! Thanks much, Pastor Maren and the Sunday School Team.

Kwik Trip Cards Fundraiser

This is an on-going year-round fundraiser for the youth. If you frequent Kwik Trip on a regular basis, please consider purchasing gift cards through St. Luke's to use for your gas and grocery purchases. The youth will get a portion of your everyday purchases. In addition to the gift, gas and grocery cards, we also have 5-count car wash cards available. Cards are available for purchase either via order form, available on the Welcome Station or directly from the stock Sunday mornings. Additional denominations are available upon request, usually within 2 weeks of the order. Contact Cari (youth@stlukeslutheran.org) with any questions or to order cards. Christmas is around the corner. KwikTrip gift cards make a great gift and support youth activities. We will be placing the next special-order November 5, so that they will arrive before Thanksgiving then a second order on December 3 for mid-December arrival.

CLM Scrip Fundraiser

We have some exciting news! Our St. Luke's Child Life Ministries Scrip Account through RaiseRight is active! What is Scrip? It's a place where you can purchase gift cards and CLM will get a portion of your purchase kicked back! Going shopping? Get a gift card to pay for your purchase and donate to CLM at the same time, it's that easy! You can order your gift card and have it instantly available to use, right from your phone. There are two easy ways to sign up, follow this link OR scan the QR code. Share with your friends and relatives by sending them a text or email! There's no cost or upcharge, just purchasing gift cards that helps CLM.

<https://www.raiseright.com/enroll?enrollCode=FD7A8962586>



Worship Techs Needed

St. Luke's Lutheran Church provides an excellent service by televising the weekly services for those who have difficulty attending in person. This is accomplished by the Worship Technology people who turn on the computer and point the cameras in the right direction. My name is John Christiansen, and I would like to appeal to everyone to consider volunteering to be a Worship Technology person. This is a very important position as many of our fellow members depend on the services being televised. Is the work difficult? No, and I will prove it to you, just email me, jchristiansen46@gmail.com, or catch me after the 8:15 a.m. service. I invite you to join me in the loft and you can watch the behind-the-scenes video work in action. The Worship Technology person has the best seat in our church. Can you imagine sitting in the loft next to Michael as he makes the organ sing? I promise I will show you everything that I can about the video work. Too old is not an acceptable excuse. 2 Corinthians 9:7 "Each of you should give what you have decided in your heart to give, not reluctantly or under compulsion, for God loves a cheerful giver." Thanks for your consideration.

Assisting Minister Help Needed

We are in need of more Assisting Ministers for all services. If you are interested in helping, or would like more information, contact the church office, (262) 542-2545.

Online Giving

To start giving electronically or make changes to your on-line giving, please log on to our website and click on “Online Giving” on the far right. You can also fill out the paper authorization form and return it to the church office. Paper authorization forms are available at the Welcome Center.

Epistle Online

Are you still receiving a paper copy of The Epistle in the mail? Reading The Epistle online saves paper and postage, allows you to print only the pages you want, and includes live links. If you would like to receive our weekly **Connections** email and our monthly newsletter, The Epistle, by email please contact the church office at (262) 542-2545 or office@stlukeslutheran.org.

Communication is Important

Communicating when, where, what, why, and how is important. If there is something you would like communicated in the weekly bulletin, weekly *Connections* email, or the monthly Epistle newsletter, it's as easy as writing the announcement and emailing it to office@stlukeslutheran.org or stopping by the office with your article by the deadlines. The deadlines for the bulletin and *Connections* are 12:00 p.m. the Tuesday before the Thursday or the weekend you would want the information in *Connections* or bulletin. The deadline for the monthly Epistle newsletter is the 15th of the month unless the 15th falls on a weekend or holiday; then, the deadline is the Friday before. If you have any questions, please reach out either by email or call the church office at (262) 542-2545.

Prayer Team

Scripture encourages us to bear one another's burdens. Lifting others up in prayer is a way to do that. The need for prayer and for people to pray grows daily! Please consider becoming a member of our Prayer Team. There are no meetings or phone calls to make. You will receive prayer requests via email and are asked to pray daily. No specific prayer, although suggestions are given in the email you receive. Simply ask God to guide you. Did you know you can pray any time and any place? How about while brushing your teeth or showering, during your kids' practices or games, while waiting for appointments? All that is asked is that you pray daily. Please consider joining this vital ministry. For information, contact Laurie Rohrwasser.

This Week at St Luke's

Sunday, October 26, 2025

Elegant Farmer Pre-Sale
 8:15 a.m. & 10:30 a.m. Worship
 Reformation Sunday
 Wear Red
 9:20 a.m. Sunday School
 9:30 a.m. Mt. Meru Coffee
 6:00 p.m. Men's A.A.

Monday, October 27, 2025

8:00 a.m. Amigos
 6:30 p.m. Al-Anon

Tuesday, October 28, 2025

8:30 a.m. Needle & Thimble
 5:30 p.m. Personnel Committee
 7:00 p.m. W.C.U. Rehearsal

Wednesday, October 29, 2025

1:00 p.m. Search Bible Study
 6:00 p.m. Godsbells
 6:00 p.m. Discipleship Training

7:00 p.m. N.A.
 7:00 p.m. Square Dancers
 7:15 p.m. Voices of Faith

Thursday, October 30, 2025

4:30 p.m. Joyful Noise
 5:00 p.m. Community Meal
 7:00 p.m. The Broad Highway A.A.

Saturday, November 1, 2025

Elegant Farmer Pre-Sale
 3:00 p.m. All Saints Day Service
 5:00 p.m. Worship

Sunday, November 2, 2025

Elegant Farmer Pre-Sale
 8:15 a.m. & 10:30 a.m. Worship
 9:20 a.m. Sunday School
 9:30 a.m. Congregation Meeting
 11:30 a.m. Executive Committee
 6:00 p.m. Men's A.A.

Serving this Weekend:

	5:00	8:15	10:30
Presiding:	Pastor Hooper	Pastor Jordan	Pastor Jordan
Preaching:	Pastor Hooper	Pastor Hooper	Pastor Hooper
Music:	Michael Schaner	Michael Schaner	Michael Schaner
Assisting Minister:	Dan Jorvig	Jim Kieso	Steve Wiley
Lector:	Ralph Klass	June Kieckhaefer	Sharon Wood
Bread Baker:	Jeanette Bjerke	Jeanette Bjerke	Jeanette Bjerke
Acolyte:	Lila Eswine	Gavin Harris	Eden Tonn
Communion Asst:	Jody Geibl	Ben Shelley	Tracy Craft
Altar Care:	Susan Klabunde	Jay Fontaine	Don Grossman
		Kathy Fontaine	Candy Grossman
Ushers:	Susan Klabunde	Patti Walkowicz	RJ Hildebran
	Kathy Fontaine	Jay & Kathy Fontaine	Darius Outlaw
		Allen Fletcher	Shelly Outlaw
		Trudy Staffeldt	Ron Pederson
Worship Tech:		Eli Larson	