



Twelfth Sunday after Pentecost

Saturday, August 30, 2025, 5:00 p.m.

Sunday, August 31, 2025, 8:15 and 10:30 a.m.

St. Luke's Lutheran Church, Waukesha, WI

www.stlukeslutheran.org office@stlukeslutheran.org (262) 542-2545

**Helping people make life-changing connections with God
through Jesus Christ.**

The Twelfth Sunday after Pentecost

Saturday, August 30, 2025, 5:00 p.m.

Sunday, August 31, 2025, 8:15 and 10:30 a.m.

Notes for Worship

- Hymns: ELW: cranberry ACS purple.
- Individually wrapped gluten-free communion wafers are available upon request.
- We invite children of all ages to be in worship with us. Children are welcome to use the Pray-Ground in front of the church on the piano side as a comfortable space to experience worship. If you feel your child(ren) are being too disruptive, you are welcome to move into the Chapel.

GATHERING

PRELUDE *Sonata, Op. 49, No. 2*

Ludwig von Beethoven

CONFESSION AND FORGIVENESS

In the name of the Father, and of the † Son, and of the Holy Spirit.

Amen.

Baptized into Christ, let us confess our sin.

Silence is kept for reflection.

Merciful God,

you free us to love others,

but we neglect our neighbors and follow our own way.

You lead us by the Spirit of joy and peace,

but we turn away from the abundant life you offer.

You surround us with patience, kindness, and generosity,

but we grow weary in doing what is right.

In your mercy, forgive us.

Do not give up on us.

Heal us, break our bonds,

and show us the path of life.

Amen.

You belong to Christ Jesus ... forgiven. Clothed with Christ, you are a new creation.

Amen.

GATHERING HYMN *All Who Hunger, Gather Gladly*

ELW 461



- 1 All who hun-ger, gath-er glad-ly; ho-ly man-na is our bread.
- 2 All who hun-ger, nev-er strang-ers; seek-cr, be a wel-come guest.
- 3 All who hun-ger, sing to- geth-er, Je-sus Christ is liv-ing bread.



Come from wil-der-ness and wan-d'ring. Here in truth we will be fed.
Come from rest-less-ness and roam-ing. Here in joy we keep the feast.
Come from lone-li-ness and long-ing. Here in peace we have been fed.



You that yearn for days of full-ness, all a-round us is our food.
We that once were lost and scat-tered in com-mu-nion's love have stood.
Blest are those who from this ta-ble live their days in grat-i-tude.



Taste and see the grace e-ter-nal. Taste and see that God is good.
Taste and see the grace e-ter-nal. Taste and see that God is good.
Taste and see the grace e-ter-nal. Taste and see that God is good.

APOSTOLIC GREETING

The grace of our Lord Jesus Christ, ... and the communion of the Holy Spirit be with all!
And also with you.

PRAYER OF THE DAY

O God, ... that we may embody the generosity of Jesus Christ, our Savior and Lord.
Amen.

WORD

FIRST READING

Proverbs 25:6-7a

- ⁶ Do not put yourself forward in the king's presence
or stand in the place of the great,
^{7a} for it is better to be told, "Come up here,"
than to be put lower in the presence of a noble.

The word of the Lord.

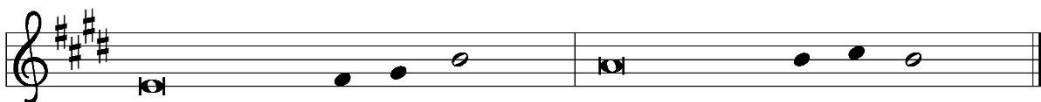
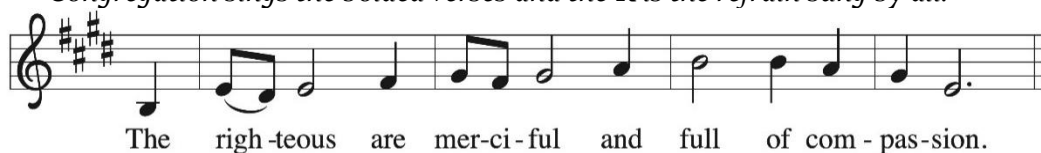
Thanks be to God.

PSALM

Psalm 112

The cantor will sing the refrain first, then all are invited to sing the refrain.

*Congregation sings the bolded verses and the **R** is the refrain sung by all.*



- ¹ Halle-lu-jah! Happy are they who | fear the Lord
and have great delight in | God's commandments!
- ² **Their descendants will be mighty | in the land;**
the generation of the upright | will be blessed. R
- ³ Wealth and riches will be | in their house,
and their righteousness will | last forever.
- ⁴ **Light shines in the darkness | for the upright;**
the righteous are merciful and full | of compassion.
- ⁵ It is good for them to be gener- | ous in lending
and to manage their af- | fairs with justice.
- ⁶ **For they will nev- | er be shaken;**
the righteous will be kept in everlast- | ing remembrance. R
- ⁷ They will not be afraid of any | evil rumors;
their heart is steadfast, trusting | in the Lord.
- ⁸ **Their heart is established and | will not shrink,**
until they see their desire up- | on their enemies.

⁹ They have given freely to the poor, and their righteousness stands | fast forever;
they will hold up their | head with honor.

¹⁰ **The wicked will see it and be angry; they will gnash their teeth and | pine away;
the desires of the wick- | ed will perish. R**

SECOND READING

Hebrews 13:1-8, 15-16

¹ Let mutual affection continue. ² Do not neglect to show hospitality to strangers, for by doing that some have entertained angels without knowing it. ³ Remember those who are in prison, as though you were in prison with them, those who are being tortured, as though you yourselves were being tortured. ⁴ Let marriage be held in honor by all, and let the marriage bed be kept undefiled, for God will judge the sexually immoral and adulterers. ⁵ Keep your lives free from the love of money, and be content with what you have, for he himself has said, "I will never leave you or forsake you." ⁶ So we can say with confidence,

"The Lord is my helper;
I will not be afraid.

What can anyone do to me?"

⁷ Remember your leaders, those who spoke the word of God to you; consider the outcome of their way of life, and imitate their faith. ⁸ Jesus Christ is the same yesterday and today and forever. ¹⁵ Through him, then, let us continually offer a sacrifice of praise to God, that is, the fruit of lips that confess his name. ¹⁶ Do not neglect to do good and to share what you have, for such sacrifices are pleasing to God.

The word of the Lord.

Thanks be to God.

CHILDREN'S LESSON



Al - le - lu - ia, al - le - lu - ia.



Al - le - lu - ia, al - le - lu - ia.



Repeat alleluia

Take my yoke
upon you, and ¹

learn from me;* for I am gentle and hum-¹ble in heart

GOSPEL

Luke 14:1, 7-14

The holy gospel according to Luke.

Glory to you, O Lord.

¹On one occasion when Jesus was going to the house of a leader of the Pharisees to eat a meal on the Sabbath, they were watching him closely.

⁷When he noticed how the guests chose the places of honor, he told them a parable. ⁸“When you are invited by someone to a wedding banquet, do not sit down at the place of honor, in case someone more distinguished than you has been invited by your host, ⁹and the host who invited both of you may come and say to you, ‘Give this person your place,’ and then in disgrace you would start to take the lowest place. ¹⁰But when you are invited, go and sit down at the lowest place, so that when your host comes, he may say to you, ‘Friend, move up higher’; then you will be honored in the presence of all who sit at the table with you. ¹¹For all who exalt themselves will be humbled, and those who humble themselves will be exalted.”

¹²He said also to the one who had invited him, “When you give a luncheon or a dinner, do not invite your friends or your brothers and sisters or your relatives or rich neighbors, in case they may invite you in return, and you would be repaid. ¹³But when you give a banquet, invite the poor, the crippled, the lame, and the blind. ¹⁴And you will be blessed because they cannot repay you, for you will be repaid at the resurrection of the righteous.”

The gospel of the Lord.

Praise to you, O Christ.

HYMN OF THE DAY *As We Gather at Your Table*

ELW 522



1 As we gath-er at your ta - ble, as we lis - ten to your word,
 2 Turn our wor-ship in - to wit-ness in the sac - ra - ment of life;
 3 Gra - cious Spir - it, help us sum-mon oth-er guests to share that feast



help us know, O God, your pres-ence; let our hearts and minds be stirred.
 send us forth to love and serve you, bring-ing peace where there is strife.
 where tri - um-phiant Love will wel-come those who had been last and least.



Nour-ish us with sa - cred sto - ry till we claim it as our own;
 Give us, Christ, your great com-pas-sion to for - give as you for - gave;
 There no more will en - vy blind us nor will pride our peace de - stroy,



teach us through this ho - ly ban-quet how to make Love's vic - t'ry known.
 may we still be - hold your im - age in the world you died to save.
 as we join with saints and an - gels to re - peat the sound-ing joy.

APOSTLES' CREED

**I believe in God, the Father almighty,
 creator of heaven and earth.**

**I believe in Jesus Christ, God's only Son, our Lord,
 who was conceived by the Holy Spirit,
 born of the Virgin Mary,
 suffered under Pontius Pilate,
 was crucified, died, and was buried;
 he descended to the dead.
 On the third day he rose again;
 he ascended into heaven,**

he is seated at the right hand of the Father,
and he will come to judge the living and the dead.

I believe in the Holy Spirit,
the holy catholic Church,
the communion of saints,
the forgiveness of sins,
the resurrection of the body,
and the life everlasting. Amen

PRAYERS OF INTERCESSION

Hear us, O God.

Your mercy is great.

PEACE

The peace of Christ be with you always!

And also with you!

MEAL

OFFERING *The Ash Grove*

David Cherwien

AUGUST MISSION: Seminaries of the Church: Luther Seminary and Wartburg Seminary.

Two Options to Use Your Phone to Give



1. Point your QR reader at the left QR graphic where you can login and track your giving. Or visit stlukeslutheran.org and click the Online Giving tab on the right side of the page.
2. Point your QR reader at the right QR graphic to make an **online one-time** gift. Or visit omella.com/o/izfds.



OFFERING PRAYER

Creator God, ... that we may work for the good of all; through Jesus Christ, our Savior.

Amen.

DIALOGUE

The Lord be with you.

And also with you.

Lift up your hearts.

We lift them to the Lord.

Let us give thanks to the Lord our God.

It is right to give our thanks and praise.

THANKSGIVING AT THE TABLE

LORD'S PRAYER

**Our Father, who art in heaven,
hallowed be thy name,
thy kingdom come,
thy will be done,
on earth as it is in heaven.**

**Give us this day our daily bread;
and forgive us our trespasses,
as we forgive those
who trespass against us;
and lead us not into temptation,
but deliver us from evil.**

**For thine is the kingdom,
and the power, and the glory,
forever and ever. Amen.**

COMMUNION

All who are baptized are welcome to receive Holy Communion, regardless of church affiliation. Receive our Lord in the bread and wine of this meal. Juice and individually wrapped, gluten-free wafers are available from the server by request.

LAMB OF GOD

ELW p. 201



Lamb of God, you take a - way the sin of the



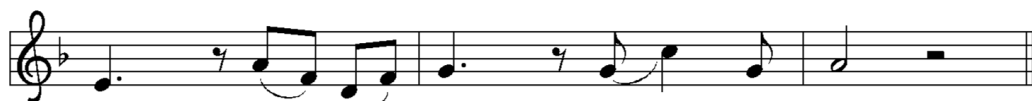
world; have mer - cy on us. Lamb of God, you



take a - way the sin of the world; have mer - cy on us.



Lamb of God, you take a - way the sin of the



world; grant us peace, grant us peace.

DISTRIBUTION HYMNS *In the Singing*

ELW 466



1 In the sing - ing, in the si - lence, in the hands ex - spect - ant, o - pen,
2 In the ques - tion, in the an - swer, in the mo - ment of ac - cept - ance,



in the bless - ing, in the break - ing, in your pres - ence at this ta - ble,
in the heart's cry, in the heal - ing, in the cir - cle of your peo - ple,

Refrain



Je - sus Christ, Je - sus Christ, be the wine of grace;

Je - sus Christ, Je - sus Christ, be the bread of peace.

HYMN *I Come with Joy*

ELW 482

- 1 I come with joy, a child of God, for - giv - en, loved, and
- 2 I come with Chris - tians far and near to find, as all are
- 3 As Christ breaks bread, and bids us share, each proud di - vi - sion
- 4 The Spir - it of the ris - en Christ, un - seen, but ev - er
- 5 To - geth - er met, to - geth - er bound by all that God has

free, the life of Je - sus to re - call in
 fed, the new com - mu - ni - ty of love in
 ends. The love that made us, makes us one, and
 near, is in such friend - ship bet - ter known, a -
 done, we'll go with joy, to give the world the

love laid down for me, in love laid down for me.
 Christ's com - mu - nion bread, in Christ's com - mu - nion bread.
 strang - ers now are friends, and strang - ers now are friends.
 live a - mong us here, a - live a - mong us here.
 love that makes us one, the love that makes us one.

TABLE BLESSING

PRAYER AFTER COMMUNION

Mothering God, ... neighbors as ourselves and proclaim your love in Jesus' name.

Amen.

SENDING

BLESSING

The love of God abound in you ... and the life of the Spirit † bless you and give you peace.

Amen.

SENDING HYMN *Sent Forth by God's Blessing*

ELW 547



1 Sent forth by God's bless - ing, our true faith con - fess - ing,
 2 With praise and thanks - giv - ing to God ev - er - liv - ing,



the peo - ple of God from this dwell - ing take leave.
 the tasks of our ev - 'ry - day life we will face—



The sup - per is end - ed. Oh, now be ex - tend - ed
 our faith ev - er shar - ing, in love ev - er car - ing,



the fruits of this ser - vice in all who be - lieve.
 em - brac - ing God's chil - dren, the whole hu - man race.



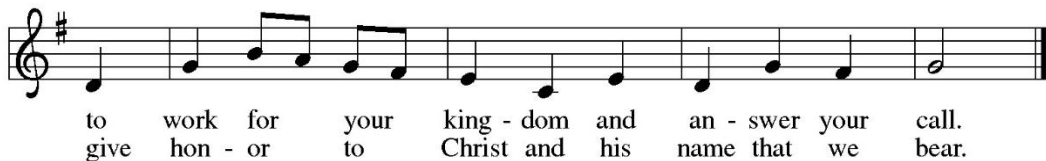
The seed of Christ's teach - ing, re - cep - tive souls
 With your feast you feed us, with your light now



reach - ing, shall blos - som in ac - tion for God and for all.
 lead us; u - nite us as one in this life that we share.



Your grace shall in - cite us, your love shall u - nite us
 Then may all the liv - ing with praise and thanks - giv - ing



ANNOUNCEMENTS

DISMISSAL

Go in peace. Live by the Spirit.

Thanks be to God.

POSTLUDE *Toccata in F*

Dietrich Buxtehude

Copyright: *All Who Hunger Gather Gladly*. Words: Sylvia G. Dunstan © 1991 GIA Publications, Inc. *All Who Hunger, Gather Gladly*. Music: David M. Cherwien, Sylvia G. Dunstan © 2023 MorningStar Music Publishers/Birnamwood Publications. *As We Gather At Your Table*. Words: Carl P. Daw, Jr. © 1989 Hope Publishing Company. *Holy Manna* – harmonization. Music: Augsburg Fortress Publishers © 2003 Augsburg Fortress Publishers. *Hymn Harmonizations for Organ – Volume 3*. Music: John Ferguson © 1986, 2006 GIA Publications, Inc. *I Come with Joy*. Words: Brian Wren © 1971, 1995 Hope Publishing Company. *In the Singing*. Words and music: Shirley Erena Murray, Carlton R. Young © 1996 Hope Publishing Company. *Sent Forth by God's Blessing*. Words: Omer Westendorf, World Library Publications © 1964 World Library Publications. *The Ash Grove*. Music: David Cherwien © 1999 Augsburg Fortress Publishers. Streamed and reprinted with permission under OneLicense.net #A-727601. All rights reserved.

Liturgies from sundaysandseasons.com License: SB127834 © 2025 Augsburg Fortress. All rights reserved.

IN OUR PRAYERS

For needs to be met: For peace among nations, for our country, for those impacted by natural disasters, for all impacted by flooding this summer, teachers, students, and parents, first responders, for all who struggle with uncertainty, caregivers, Hope Center, Bishop Elect Curry, Marilyn H, Sheryl G, Kim GM, Doreen M, Mike M, Kenneth L, Kristen, Jan C, Katie E, Pat H, John F, Jan N, Annette W, Kathy P, Dawn TW, Anna and Don F, Martha O, Carol L, Bradley, Mick H, Melissa K, Melody B, Kris P, Tim M, Bunnie N, Ian L, Laura W, John W, Joyce, Dave M, Chris B, Shelby H, Chris R, Katie L, Chuck, Michael B, Andy S, Kathy J, Kenzie D, Bob, Ashlee S, Char K, Kathy, Barb C, Carey, Dave, Sunny, Betty, Brayden, Darlene, Dale R, Pat S, Lisa S, Isabella, Connor W, Liz S, Terri I, Ben M, Steve S, Judy, Kathy DW, Carol, Debbie C, Janet J, Shane R, Karen R, AmandaLee B, Eldon, Alex, Liz S, Jon, Lisa E, Dave S, Chris B, Sarah, Brian B, Mark, Vi E.

For our partner churches in the Meru Diocese in Tanzania: For the challenges they face. For God's continued blessings on our partnership.

For those serving in the military: Gary Bjerke, Owen Hager, Jim Kieso Jr, Daniel Krueger, and Dmitriy Lando.

NOTES FOR WORSHIP

- Need to enter/leave the sanctuary while the service is underway? Please find times that are least distracting to others to do so. Appropriate times could be during a hymn, the peace, or the offering. Please try to avoid movement during divine moments of sacred action (when God has promised to be among us in special ways): in the reading/preaching of Scripture and in the Sacraments of Baptism and Holy Communion. And remember, there is a lot of grace for families and small children – their voices, wiggles, unexpected movements are part of the joy of living in community together.
- Our 8:15 a.m. services are livestreamed to the web via Facebook and our website, where they are archived for later viewing. Leaders and active assistants/participants in the service appear in the livestream. It is also possible that you and/or your children may be seen in our livestream.
- Please wear a nametag, especially to welcome visitors. It's another way we can be welcoming and help us to say hello to each other!

ANNOUNCEMENTS

Friendship Pads

Please be sure to sign in on the friendship pads located in each pew.

Ambo Flowers

This weekend's flowers are given in memory of Rollie and Marilyn Jorvig by Dan Jorvig.

Hospitality Thank You

Augusts Mt. Meru Coffee Hour is sponsored by Pat Efflandt in honor of her 96th birthday on August 6, and to honor Wendy Bacon and her hospitality.

50+ Anniversary

We give thanks for Ralph and Mary Klass celebrating their 60th wedding anniversary on September 4!

Fundraiser for Hadfield

Dennis Voit is hosting a fundraiser, "Snacks and Supplies for Hadfield" for the start of school on Tuesday, September 2. Please consider supporting this fundraiser through prayer and/or donations. You can check out the fundraiser page and RSVP online at,

<https://thrivent.cotribute.co/events/1182814/detail>



Rally Day!

On the weekend of September 6 and 7 we rally for the fall, as we roll out our fall programming and celebrate Life-Changing Faith. Watch for more information about Sunday School, Bible Studies, and other activities for the fall. We'll celebrate the weekend with a picnic at Bethesda Park, Sunday, September 7 after the 10:30 a.m. service. Please sign up to bring a dish to pass in sign up central.

Wild Church Worship

Are you a nature lover? Or just looking to experience worship in a different way and unique setting? Mark your calendars for the official launch of the Greater Milwaukee Wild Church! It will be a nature spirituality based Christian community that worships outside when possible and focuses on how the sacred speaks to us through creation. Wild Church is team-led, under the direction of local ELCA Pastor Larry Harpster. On Sunday, September 7 at 2:00 p.m. we will be kicking off our adventure with a celebration service at Ascension Lutheran church in Waukesha, 1415 Dopp St. Come ready to engage with all your senses, and bring a friend or two!

Theology Uncorked

Please come be part of this special group that gathers for uplifting spiritual conversation and good fellowship. Our next meeting will be Tuesday, September 9, at 6:00 p.m. at Cantarito's 408 E. Main St., Waukesha. This is a "come-as-you-can" group; no commitment required. Please join the women of St. Luke's and be part of the lively atmosphere. Consider bringing a neighbor or friend!

Discipleship Training is Back Starting September 10

Hey Middle Schoolers, if you're in grades 6-8, we've got a spot for you in Discipleship Training (DT.) St. Luke's epic combo of confirmation and youth group! Every Wednesday night, we gather for a delicious meal, games, goofiness, real talk about God, big questions, deeper faith, LOTS of laughter, and maybe even silly string. DT Kickoff Night is Wednesday, September 10, 6:00-8:00 p.m.

Search Bible Study Has a New Time

Join PJ for Search Bible Study on Wednesdays at 1:00 p.m. beginning September 10. Grow in faith and engage in great conversations.

Sunday School Begins Soon

Sunday School begins on Rally Day, Sunday, September 7. Meet teachers and register your child for a Sunday School group. Classes will start the following Sunday, September 14. We'd love to have your kid(s) to help teach them to trust God's love in Christ Jesus. For more information, or to sign up please scan the QR code.



Outreach for Hope 2025 Family Ride Run Walk

The 2025 Outreach for Hope Family Ride, Run, Walk, will be on Saturday, September 27. This is the Outreach for Hope's biggest fundraiser of the year. They are hoping to raise \$150K for grants to ministries serving communities experiencing material poverty in the Greater Milwaukee Synod, ELCA. To register, volunteer, and/or donate, go to OFHRRW.ORG.

Travel with PJ to Greece and Beyond!

St. Luke's is traveling to Greece, the Mediterranean Sea, and the coast of Turkey to visit sites of the Apostle Paul and St. John. There will be history, culture, food, music, and friendship on this 10-day journey, April 20-29, 2026. This 10-day trip includes three days on a small cruise ship sailing the Greek Islands of the Mediterranean Sea. It is hosted by Pastors Lindsay and Kimberly Jordan. Read the brochure, note the terms and conditions, see the discount given for early registrations. Invite your friends! Printed brochures are located at the Welcome Center. Informational Meeting will be held Sunday, September 14, at 9:30 a.m. in the chapel.

Bible Distribution for Kindergarteners through Grade 3

Sunday, September 21, at both worship services, we will give Bibles to children in kindergarten through 2nd Grade, who have not yet received a Spark Story Bible. On the same day, we are giving Spark (regular) Bibles to kids in 3rd grade. Call the church office to sign your child(ren) up for a new Bible! (262) 542-2545.

St. Luke's Musical Ensembles

Our St. Luke's musical ensembles will soon be starting, even though it seems like we just completed the last program year! If you are interested in joining any of our ensembles, talk to Michael Schaner, Director of Music Ministries.

Started Wednesday, August 20:

Godsbells: adult handbells - 6:00 - 7:15 p.m. - sanctuary balcony.

Voices of Faith: high school - adult mixed choir - 7:15 - 8:30 p.m. - music room, lower level

Starting Sunday, September 14:

Men's Chorus: 9:30 a.m., between services. Open to any men of the congregation.

Rehearses the second Sunday of each month.

Starting Thursday, September 11:

Joyful Noise: ensembles for 4 years old - 6th grade - 4:30 p.m.

Diverse Harvest: the band that leads the Ignite service, rehearses all year the second and fourth Thursday of each month at 6:00 p.m.

Hadfield News

As we prepare for back-to-school season, one of the major needs of Hadfield is healthy snacks. Examples of healthy snacks would be granola bars, cheese, and crackers, applesauce pouches, Jack links, but nothing with nuts. There is also an Amazon web address and QR code to the Hadfield Amazon wish list! Items can be purchased through Amazon and will be delivered directly to the school! The Hadfield donation box will be in the Welcome Center to drop off these items. Hadfield thanks you for your continued support.
<https://share.google/CwXkxLPiUgbboSxsZ>



Worship Tech and Assistant Minister Help Needed

We need help operating our streaming equipment on Sunday mornings at our 8:15 a.m. services. It's fairly easy to do, and we offer you the training needed! This helpful ministry allows those who cannot join us in person to see and hear our outstanding worship services. We are also in need of more Assistant Ministers for all services. If you are interested in helping in either or both of these ministries, or would like more information, contact the church office, (262)542-2545.

Communication is Key

Communicating when, where, what, why, and how is key. If there is something you would like communicated in the weekly bulletin, weekly *Connections* email, or the monthly Epistle newsletter, it's as easy as writing up the announcement and emailing it to office@stlukeslutheran.org or stopping by the office with your article by the deadlines. The deadlines for the bulletin and *Connections* are 12:00 p.m. the Tuesday before the Thursday or the weekend you would want the information in *Connections* or bulletin. The deadline for the monthly Epistle newsletter is the 15th of the month unless the 15th falls on a weekend or holiday; then, the deadline is the Friday before. If you have any questions, please reach out either by email or call the church office at (262) 542-2545.

CLM Scrip Fundraiser

We have some exciting news! Our St. Luke's Child Life Ministries Scrip Account through RaiseRight is active! What is Scrip? It's a place where you can purchase gift cards and CLM will get a portion of your purchase kicked back! Going shopping? Get a gift card to pay for your purchase and donate to CLM at the same time, it's that easy! You can order your gift card and have it instantly available to use, right from your phone. There are two easy ways to sign up, follow this link OR scan the QR code. Share with your friends and relatives by sending them a text or email!

There's no cost or upcharge, just purchasing gift cards that helps CLM.

<https://www.raiseright.com/enroll?enrollCode=FD7A8962586>



Support the Food Pantry

You can make monetary donations to the pantry through their website. Leaders of the pantry want us to know that canned fruits and veggies along with soups have been limited the last few months. When shopping for yourself, pick up some for our neighbors and drop them in the food pantry barrels as you leave the grocery store, or bring to church to drop in the cart by door.

Help For the Hope Center

There are many ways to help the Hope Center. Sorters are needed in the Clothing Shop, prep and serve breakfast and lunch, dates can vary. You can volunteer by contacting (262) 549-8726. Check out their website for their weekly donation request list at <https://hopecenterwi.org/donate-now/>. Hope Center address is 101 W Broadway, Waukesha 53186.

Online Giving

To start giving electronically or make changes to your existing on-line giving, please log on to our website and click on the “Online Giving” tab on the far right. You can also fill out the paper authorization form and return it to the church office. Paper authorization forms are available at the Welcome Center. Thank you!

Serving in Worship

There are a variety of ways to serve the community whenever we worship. Each of the ways are equally important to our weekly experience of God’s grace. You can serve as a lector, an usher, a member of the altar guild, a communion assistant and more. We use “Ministry Scheduler Pro,” an online tool, to help people schedule their worship ministry involvement. If you have an account on Ministry Scheduler Pro, you received an email inviting you to update your profile and involvement. That email also contained your credentials to log in. The spotlight section of our website’s homepage also has a link to our Ministry Scheduler that you can follow. Our goal is to develop schedules that use the many gifts and talents present in our congregation. Please log on to Ministry Scheduler Pro, update your profile, and let us know any dates you are not available to serve.

Epistle Online

Are you still receiving a paper copy of The Epistle in the mail? Reading The Epistle online saves paper and postage, allows you to print only the pages you want, and includes live links. If you would like to receive our weekly **Connections** email and our monthly newsletter, The Epistle, by email please contact the church office at (262) 542-2545 or office@stlukeslutheran.org.

Prayer Team

Scripture encourages us to bear one another's burdens. Lifting others up in prayer is a way to do that. The need for prayer and for people to pray grows daily! Please consider becoming a member of our Prayer Team. There are no meetings or phone calls to make. You will receive prayer requests via email and are asked to pray daily. No specific prayer, although suggestions are given in the email you receive. Simply ask God to guide you. Did you know you can pray any time and any place? How about while brushing your teeth or showering, during your kids' practices or games, while waiting for appointments? All that is asked is that you pray daily. Please consider joining this vital ministry. For information, contact Laurie Rohrwasser.

Extending Care for You

Our pastors make visits and calls to people in need of pastoral care. If you would like pastoral care, please call the church office at (262) 542-2545. This is especially important if you are going through life-transitions, illness, or trauma. If you change your address or enter a care facility or rehab center, please update the church office.

Committing to Worship

We are encouraging each other all year long to commit/recommit to deeper engagement in worship. Perhaps you've drifted away from regular worship attendance. Come back and let God feed you in the Word and at the table of Holy Communion. Maybe while you're here, you might be called to participate more fully in the liturgies we speak and sing together. Commit yourself/yourselves to deeper engagement in worship. The more you engage God in worship, the deeper your relationship with Him grows.

Are You Receiving Our Weekly *Connections* Email?

Each week we send out an email called *Connections*. It includes announcements, links, information about worship schedules, community events, and so much more. If you are not receiving it, email the office (office@stlukeslutheran.org) to be added to the email list.

Prayer Ministry

How can our Prayer Team pray for you, a friend or loved one? We are ready to lift up prayers for you during the joys and trials of your life. If you or someone you know needs prayer for any reason, please contact Laurie Rohrwasser, lrohrwasser@stlukeslutheran.org Perhaps you know of someone who could use a note of encouragement or well wishes, please let her know.

This Week at St Luke's

Sunday, August 31, 2025

8:15 & 10:30 a.m. Worship

6:00 p.m. Men's A.A.

Monday, September 1, 2025

Labor Day Office Closed

6:30 p.m. Al-Anon

Tuesday, September 2, 2025

8:30 a.m. Needle & Thimble

9:30 a.m. 1st Tuesday Book Club

7:00 p.m. Waukesha Choral Union
Rehearsal

Wednesday, September 3, 2025

6:00 p.m. Godsbells

6:00 p.m. Discipleship Training 3

7:00 p.m. N.A.

7:15 p.m. Voices of Faith

Thursday, September 4, 2025

6:30 p.m. Women Bible Study

7:00 p.m. The Broad Highway A.A.

Saturday, September 6, 2025

5:00 p.m. Worship

Sunday, September 7, 2025

Rally Day!

8:15 & 10:30 a.m. Worship

9:20 a.m. Discipleship Training 3

12:00 p.m. Rally Day Picnic
Bethesda Park

6:00 p.m. Men's A.A.

Serving this Weekend:

	5:00	8:15	10:30
Presiding:	Pastor Jordan	Pastor Jordan	Pastor Jordan
Preaching:	Pastor Jordan	Pastor Hooper	Pastor Hooper
Music:	Michael Schaner	Michael Schaner	Michael Schaner
Assisting Minister:	Dan Jorvig	Jim Kieso	Dan Jorvig
Lector:	Susan Klabunde	Robbin Krueger	Sharon Wood
Bread Baker:	Judie Federico	Judie Federico	Judie Federico
Acolyte:	Presley Lopez	Kylie Smith	Eden Tonn
Communion Asst:	Jody Geibl	Ginny Dietzler	Kathy Fontaine
Ushers:	Susan Klabunde Harold Bloch	Wendy Bacon Jay Fontaine Kathy Fontaine	Steve Wiley Debbie Knee Rob Riedel
Altar Care:	Susan Klabunde Kathy Fontaine	Trudy Staffeldt Trudy Staffeldt	Curt Steinquist Kathi Bartelmas Rusty Bartelmas
Worship Tech:		John Christiansen	