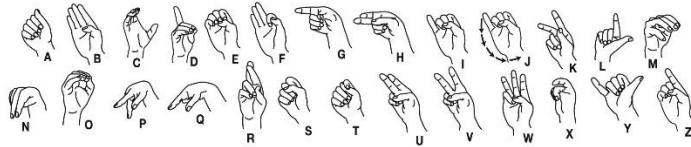


# Puzzle!

Hands play a key role in the biblical accounts of Jesus' crucifixion and resurrection. Use this sign-language alphabet to retell what happened.



Jesus' \_\_\_\_\_ were \_\_\_\_\_



to the tree. Two criminals were also crucified,

one on the \_\_\_\_\_



and the other on the \_\_\_\_\_ of Jesus. Jesus



cried out with a loud voice, "\_\_\_\_\_,"



into your \_\_\_\_\_ I commit my spirit."



(Luke 23:46) Jesus' friends \_\_\_\_\_



him from the cross to the tomb. Jesus showed

\_\_\_\_\_ his \_\_\_\_\_ to prove



he was Christ. Bring your \_\_\_\_\_ together



in \_\_\_\_\_, and thank God for his



Son, Jesus!

Answer: hands, nailed, right, hand, left, Father, hands, carried, Thomas, hands, hands, prayer